

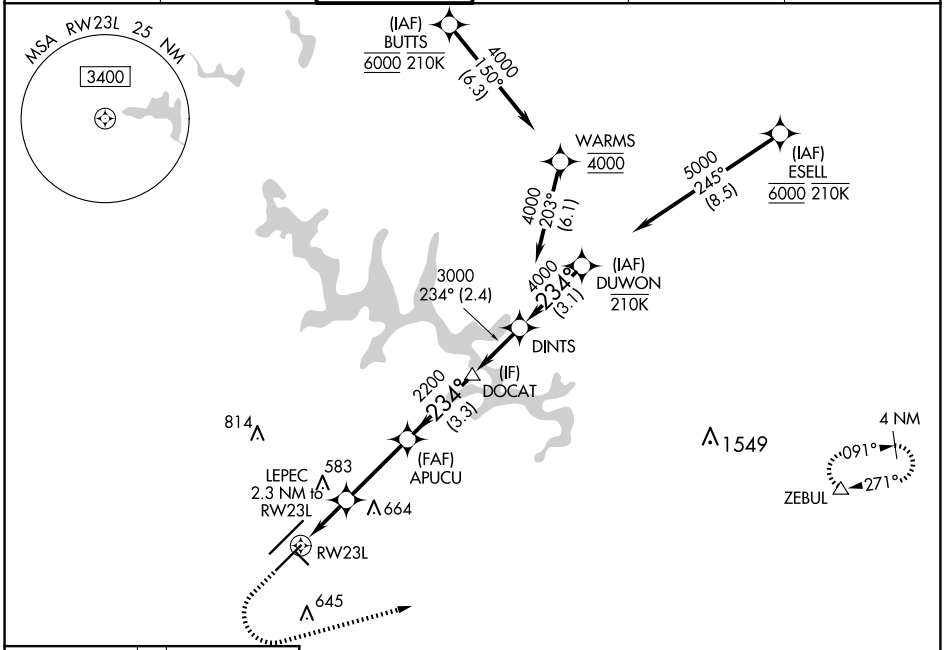
WAAS CH 65713 W23B	APP CRS 234°	Rwy Idg TDZE 435 Apt Elev 435
--	------------------------	---

RNAV (GPS) Y RWY 23L

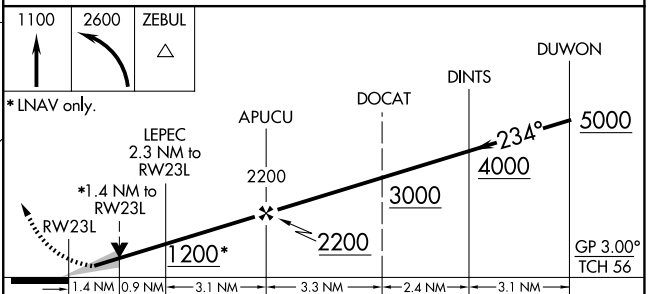
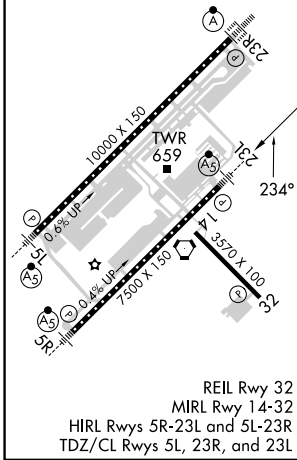
RALEIGH-DURHAM INTL (RDU)

RNP APCH-GPS.	MALSR 	MISSED APPROACH: Climb to 1100 then climbing left turn to 2600 direct ZEBUL and hold.
<p>▼ Simultaneous approach authorized. LNAV procedure NA during simultaneous operations. For uncompensated Baro-VNAV systems, LNAV/VNAV NA below -1.2°C or above 54°C. Use of FD or AP required during simultaneous operations. For inop ALS, increase LNAV Cat C/D visibility to 1 3/8 SM.</p>		

D-ATIS 123.8	RALEIGH APP CON 127.675 307.9	RALEIGH TOWER 127.45 257.8	GND CON 121.9 348.6	CINC DEL 120.1	CPDLC
------------------------	---	--------------------------------------	-------------------------------	--------------------------	-------



ELEV 435	D	TDZE 435
----------	----------	----------



CATEGORY	A	B	C	D
LPV DA		635/18	200 (200-1/2)	
LNAV/VNAV DA		820/35	385 (400-5/8)	
LNAV MDA	920/24	485 (500-1/2)	920/50	485 (500-1)
C CIRCLING	960-1	525 (600-1)	1020-1 1/2 585 (600-1 1/2)	1180-2 1/2 745 (800-2 1/2)

SE-2, 23 JAN 2025 to 20 FEB 2025

SE-2, 23 JAN 2025 to 20 FEB 2025