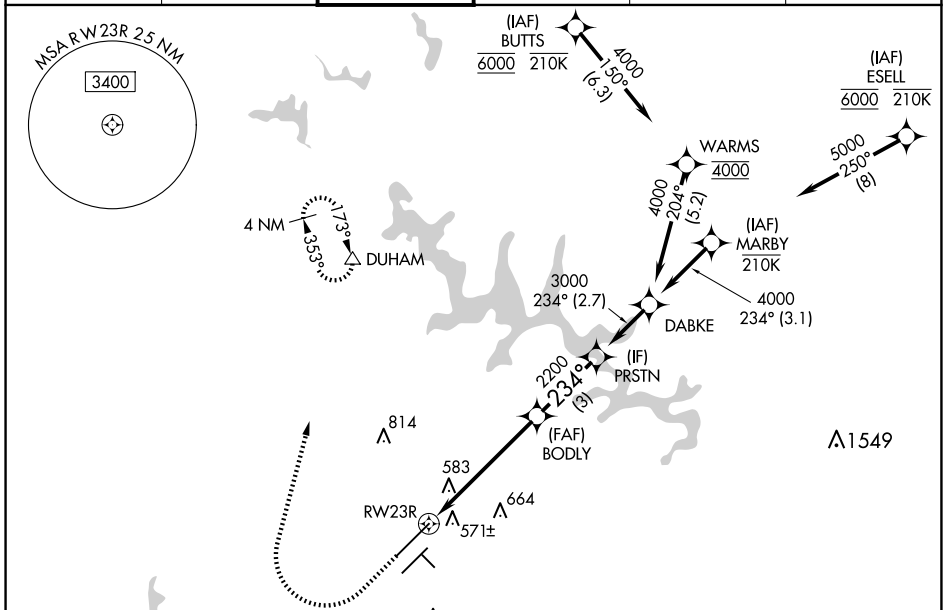


WAAS CH 45613 W23A	APP CRS 234°	Rwy Idg 10000 TDZE 409 Apt Elev 435
--	------------------------	--

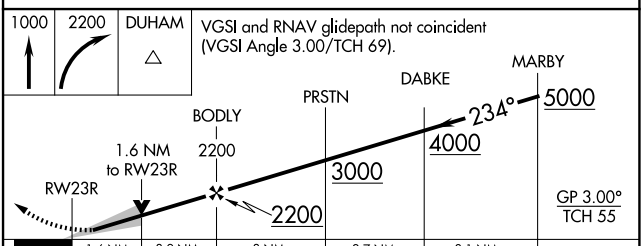
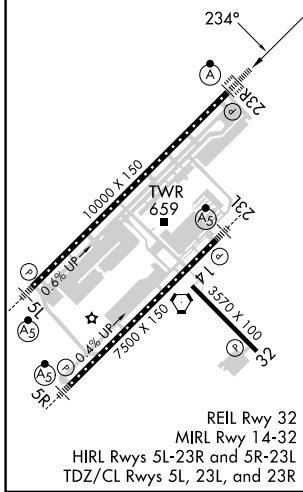
RNAV (GPS) Y RWY 23R

RALEIGH-DURHAM INTL (RDU)

RNP APCH - GPS		<p>Simultaneous approach authorized. LNAV procedure NA during simultaneous operations. Use of FD or AP providing RNAV track guidance required during simultaneous operations.</p> <p>For uncompensated Baro-VNAV systems, LNAV/VNAV NA below -12°C or above 54°C. For inop ALS, increase LNAV/VNAV all Cats visibility to RVR 6000 and LNAV Cat C/D visibility to 1½ NM.</p>		<p>ALSF-2</p>	<p>MISSED APPROACH: Climb to 1000 then climbing right turn to 2200 direct DUHAM and hold.</p>
D-ATIS 123.8	RALEIGH APP CON 127.675 307.9	RALEIGH TOWER 127.45 257.8	GND CON 121.9 348.6	CLNC DEL 120.1	CPDLC



ELEV 435	D	TDZE 409
----------	----------	----------



CATEGORY	A	B	C	D
LPV DA		609/18	200 (200-½)	
LNAV/VNAV DA		826/40	417 (400-¾)	
LNAV MDA	980/24	571 (600-½)	980-1¼	571 (600-1¼)
C CIRCLING	980-1	545 (600-1)	1020-1½ 585 (600-1½)	1180-2½ 745 (800-2½)

SE-2, 23 JAN 2025 to 20 FEB 2025

SE-2, 23 JAN 2025 to 20 FEB 2025