

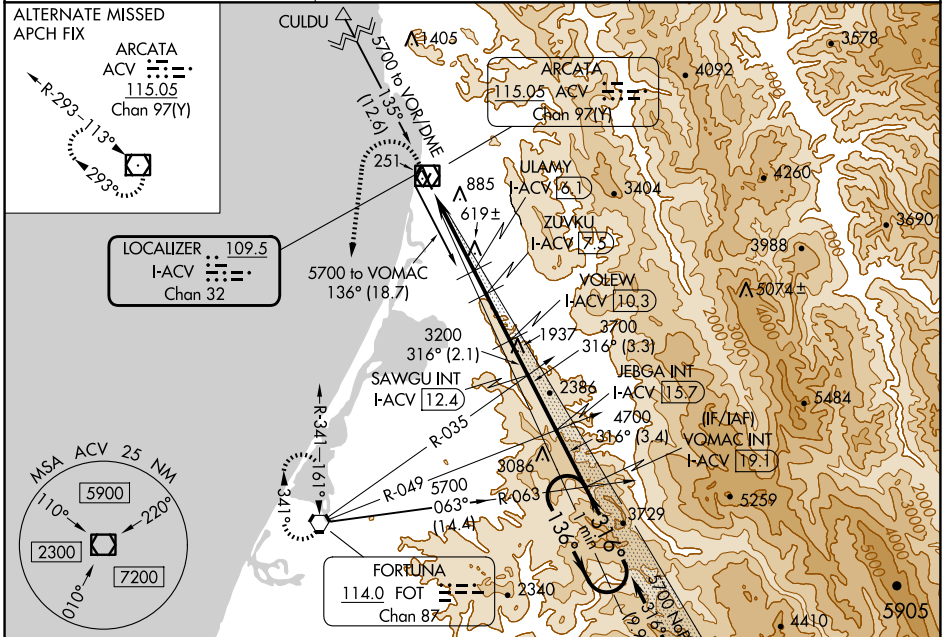
LOC/DME I-ACV 109.5 Chan 32	APP CRS 316°	Rwy Idg TDZE Apt Elev	5846 221 222
---	------------------------	-----------------------------	---

ILS or LOC RWY 32

CALIFORNIA REDWOOD COAST-HUMBOLDT COUNTY (ACV)

<p>NA Circling NA northeast of Rwy 14-32. DME required.</p>	<p>MALSR</p>	<p>MISSED APPROACH: Climb to 800 then climbing left turn to 3000 direct FOT VORTAC and hold.</p>
--	---------------------	---

<p>ASOS 118.525</p>	<p>SEATTLE CENTER 124.85 306.3</p>	<p>UNICOM 123.0 (CTAF)</p>
---------------------------------------	--	--



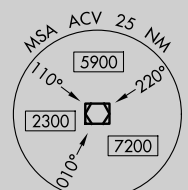
ALTERNATE MISSED APCH FIX

ARCATA ACV 115.05 Chan 97(Y)

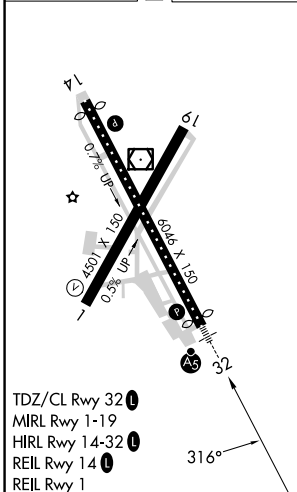
R-293-113°

LOCALIZER 109.5

I-ACV Chan 32



ELEV 222	D	TDZE 221
----------	----------	----------



Use I-ACV DME when on the localizer course. VGSI and ILS glidepath not coincident (VGSI Angle 3.00/TCH 43).

VOMAC I-ACV 19.1 One Minute Holding Pattern

***LOC only**

ULAMY I-ACV 6.1

ZUVKU I-ACV 7.5

VOLEW I-ACV 10.3

SAWGU I-ACV 12.4

JEBGA I-ACV 15.7

3200 4700

1860* 2320* 3200

316° 136°

GS 3.00° TCH 47

CATEGORY	A	B	C	D
S-ILS 32	441/18 220 (300-1/2)			
S-LOC 32	880/24	659 (700-1/2)	880-1 3/8	659 (700-1 3/8)
C CIRCLING	880-1	658 (700-1)	880-1 7/8	880-2
			658 (700-1 7/8)	658 (700-2)

SW-2, 23 JAN 2025 to 20 FEB 2025

SW-2, 23 JAN 2025 to 20 FEB 2025