

WAAS CH 63200 W01A	APP CRS 013°	Rwy Idg TDZE Apt Elev	4501 204 222
--	------------------------	-----------------------------	---

RNAV (GPS) RWY 1

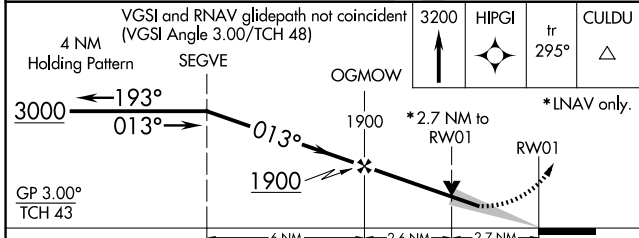
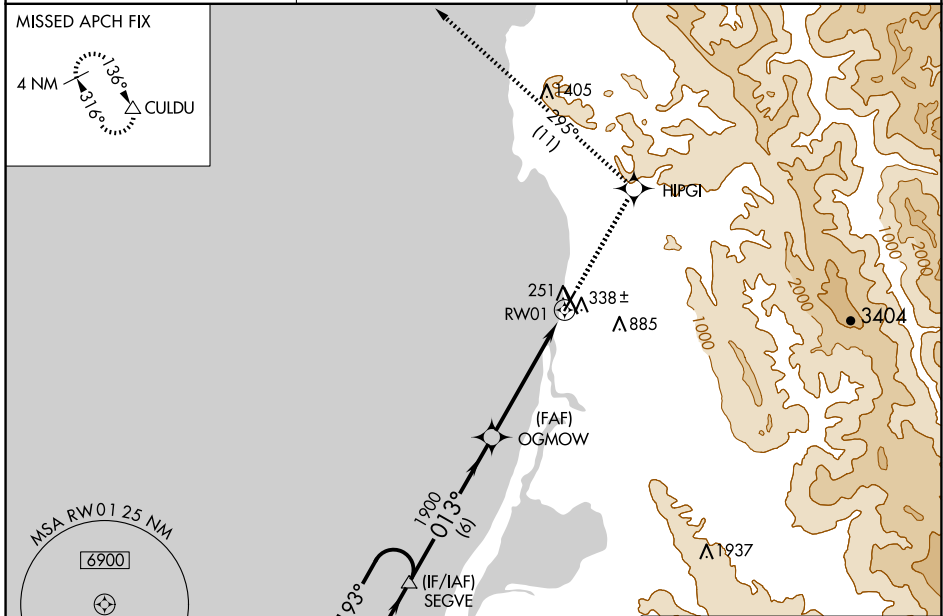
CALIFORNIA REDWOOD COAST-HUMBOLDT COUNTY (ACV)

RNP APCH - GPS.

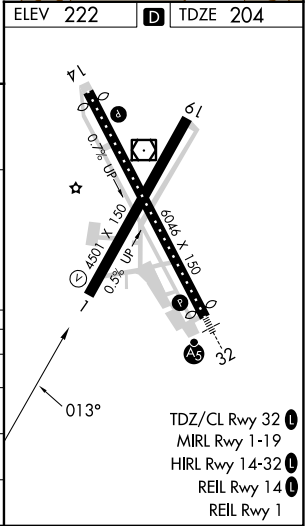
For uncompensated Baro-VNAV systems, LNAV/VNAV NA below -2°C or above 54°C. Circling NA northeast of Rwy 14-32.

MISSED APPROACH: Climb to 3200 direct HIPGI and on track 295° to CULDU and hold.

ASOS 118.525	SEATTLE CENTER 124.85 306.3	UNICOM 123.0 (CTAF)
------------------------	---------------------------------------	-------------------------------



CATEGORY	A	B	C	D
LPV DA		870-2½	666 (700-2½)	
LNAV/VNAV DA		838-2½	634 (700-2½)	
LNAV MDA	1080-1 876 (900-1)	1080-1¼ 876 (900-1¼)	1080-2½	876 (900-2½)
C CIRCLING	1080-1¼	858 (900-1¼)	1080-2½ 858 (900-2½)	1080-2¾ 858 (900-2¾)



SW-2, 23 JAN 2025 to 20 FEB 2025

SW-2, 23 JAN 2025 to 20 FEB 2025