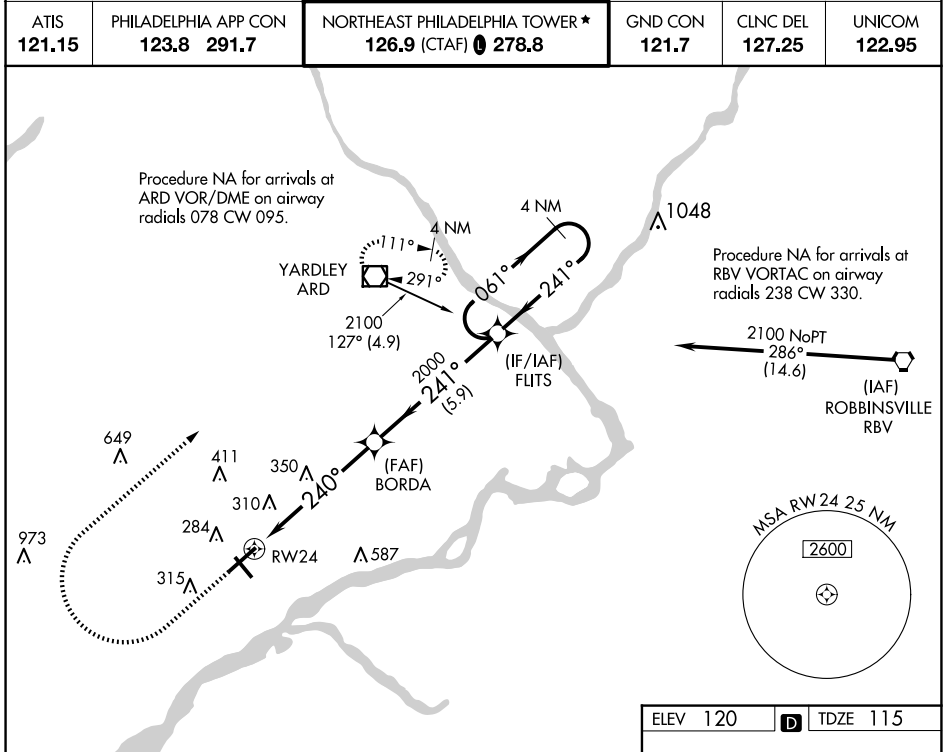


WAAS CH 45504 W24A	APP CRS 240°	Rwy Idg TDZE Apt Elev	6102 115 120
--	------------------------	-----------------------------	---

RNAV (GPS) RWY 24

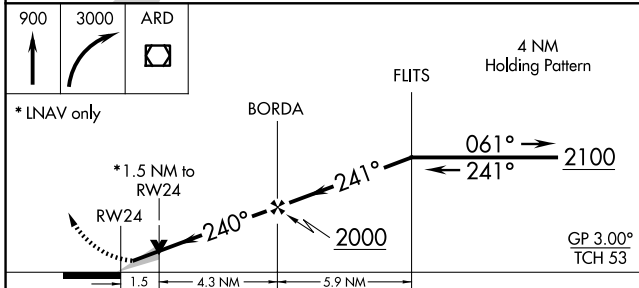
NORtheast PHILADELPHIA (PNE)

<p>For uncompensated Baro-VNAV systems, LNAV/VNAV NA below -1°C (11°F) or above 54°C (130°F). DME/DME RNP-0.3 NA.</p>	<p>MALSR</p>	<p>MISSED APPROACH: Climb to 900 then climbing right turn to 3000 direct ARD VOR/DME and hold.</p>			
			<p>ATIS 121.15</p>	<p>PHILADELPHIA APP CON 123.8 291.7</p>	<p>NORtheast PHILADELPHIA TOWER ★ 126.9 (CTAF) 278.8</p>



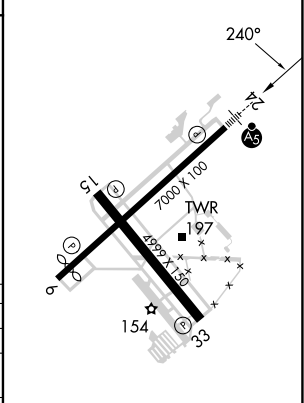
NE-4, 23 JAN 2025 to 20 FEB 2025

NE-4, 23 JAN 2025 to 20 FEB 2025



ELEV 120	D	TDZE 115
----------	----------	----------

CATEGORY	A	B	C	D
LPV DA		315-1/2	200 (200-1/2)	
LNAV/VNAV DA		560-7/8	445 (500-7/8)	
LNAV MDA	640-1/2	525 (600-1/2)	640-1	525 (600-1)
C CIRCLING	700-1	580 (600-1)	720-1 1/2 600 (600-1 1/2)	780-2 660 (700-2)



HIRL Rwy 6-24
MIRL Rwy 15-33
REIL Rwy 6, 15 and 33