

WAAS CH 69327 W33A	APP CRS 333°	Rwy Idg TDZE Apt Elev	4999 108 120
--	------------------------	-----------------------------	---

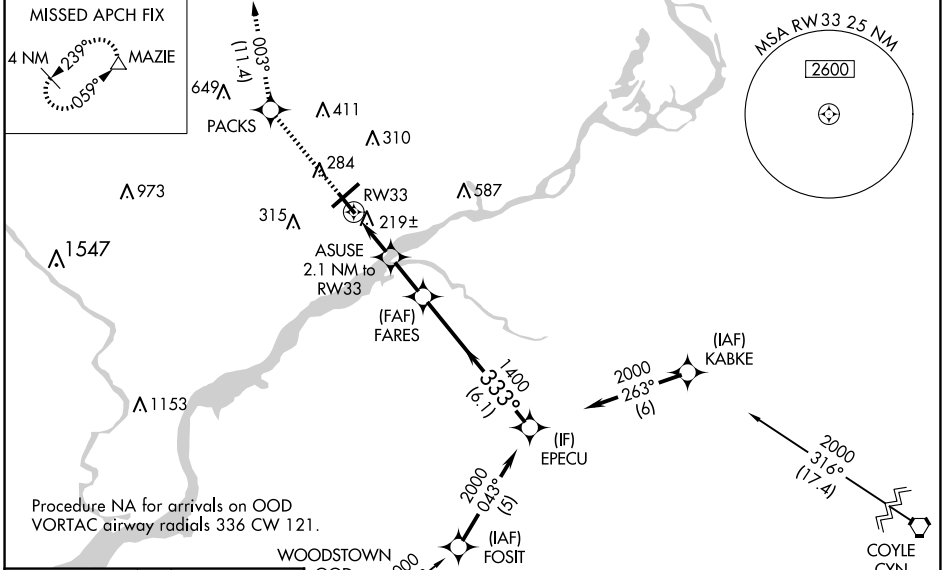
RNAV (GPS) RWY 33

NORtheast PHILADELPHIA (PNE)

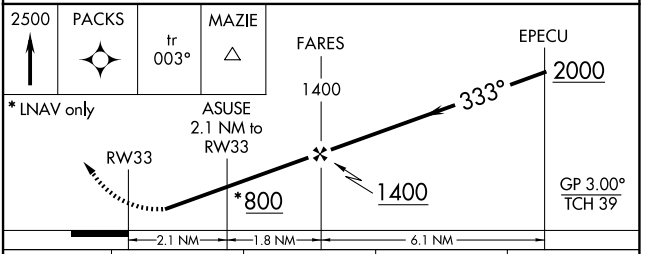
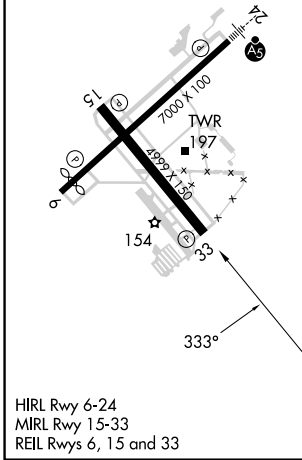
⚠ Baro-VNAV NA when using Philadelphia Intl altimeter setting. For uncompensated Baro-VNAV systems, LNAV/VNAV NA below -15°C (5°F) or above 43°C (109°F). When local altimeter setting not received, use Philadelphia Intl altimeter setting: increase LPV DA to 430 feet and LNAV/VNAV DA to 450 feet and all LPV and LNAV/VNAV visibilities ½ SM; increase all MDAs 60 feet and LNAV visibility Cat C/D ¼ SM and Circling visibility Cat C/D ¼ SM. DME/DME RNP-0.3 NA.

MISSED APPROACH:
Climb to 2500 direct
PACKS and on track
003° to MAZIE and hold.

ATIS 121.15	PHILADELPHIA APP CON 123.8 291.7	NORtheast PHILADELPHIA TOWER * 126.9 (CTAF) 0 278.8	GND CON 121.7	CLNC DEL 127.25	UNICOM 122.95
-----------------------	--	---	-------------------------	---------------------------	-------------------------



ELEV 120	D	TDZE 108
----------	----------	----------



CATEGORY	A	B	C	D
LPV DA		380-1	272 (300-1)	
LNAV/VNAV DA		400-1	292 (300-1)	
LNAV MDA		480-1	372 (400-1)	
CIRCLING	700-1	580 (600-1)	720-1½ 600 (600-1½)	780-2 660 (700-2)

NE-4, 23 JAN 2025 to 20 FEB 2025

NE-4, 23 JAN 2025 to 20 FEB 2025