

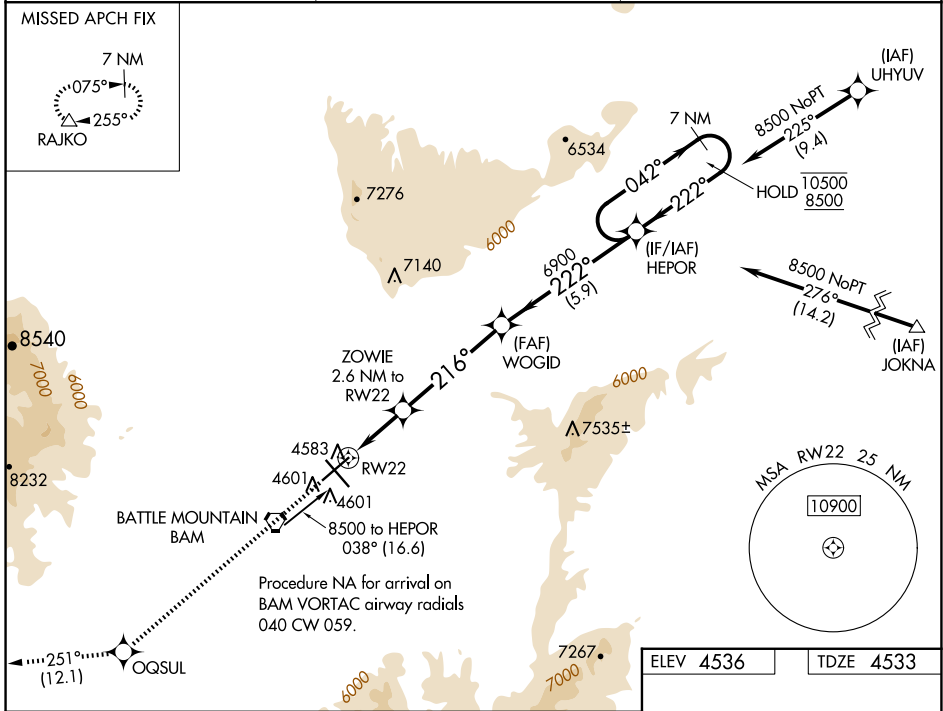
WAAS CH <b>82741</b> <b>W22A</b>	APP CRS <b>216°</b>	Rwy Idg <b>7300</b> TDZE <b>4533</b> Apt Elev <b>4536</b>
--	------------------------	---

# RNAV (GPS) RWY 22

BATTLE MOUNTAIN (BAM)

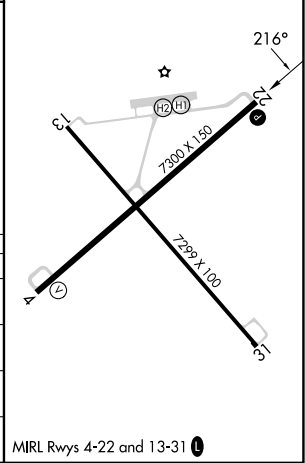
RNP APCH. ▼ ▲ Baro-VNAV NA.	MISSED APPROACH: Climb to 11900 direct OQSUL and track 251° to RAJKO and hold, continue climb-in-hold to 11900.
-----------------------------------	---

AWOS-3 <b>119.45</b>	SALT LAKE CITY CENTER <b>132.25 338.35</b>	UNICOM <b>122.8</b> (CTAF) <b>📻</b>
-------------------------	---	--



11900 OQSUL	RAJKO	VGSI and RNAV glidepath not coincident (VGSI Angle 3.00/TCH 45).	7 NM Holding Pattern
↑ 251°	tr 216°		
*LNAV only.		WOGID HEPOR	
*0.8 NM to RW22		10500 8500	
ZOWIE 2.6 NM to RW22		042° → 222° ←	
5400*		6900	
0.8 NM		GP 3.00° TCH 51	
1.8 NM		6900	
4.7 NM		222°	
5.9 NM		216°	

ELEV 4536	TDZE 4533
-----------	-----------



CATEGORY	A	B	C	D
LPV DA		4753-1	220 (300-1)	
LNAV/VNAV DA		4808-1	275 (300-1)	
LNAV MDA	4980-1	447 (500-1)	4980-1 <sup>3</sup> / <sub>8</sub>	447 (500-1 <sup>3</sup> / <sub>8</sub> )
CIRCLING	4980-1 444 (500-1)	5000-1 464 (500-1)	5000-1 <sup>1</sup> / <sub>2</sub> 464 (500-1 <sup>1</sup> / <sub>2</sub> )	5460-3 924 (1000-3)