

# SBONO ONE ARRIVAL

AL-545 (FAA)

PALM SPRINGS, CALIFORNIA

SOCAL APP CON  
 126.7 370.95  
 PSP ATIS  
 124.65  
 TRM ASOS  
 118.325  
 BERMUDA DUNES UNICOM  
 122.8  
 JACQUELINE COCHRAN UNICOM  
 123.0  
 PALM SPRINGS TOWER\*  
 119.7 377.05

GOFFS  
 114.4 GFS :...:  
 Chan 91

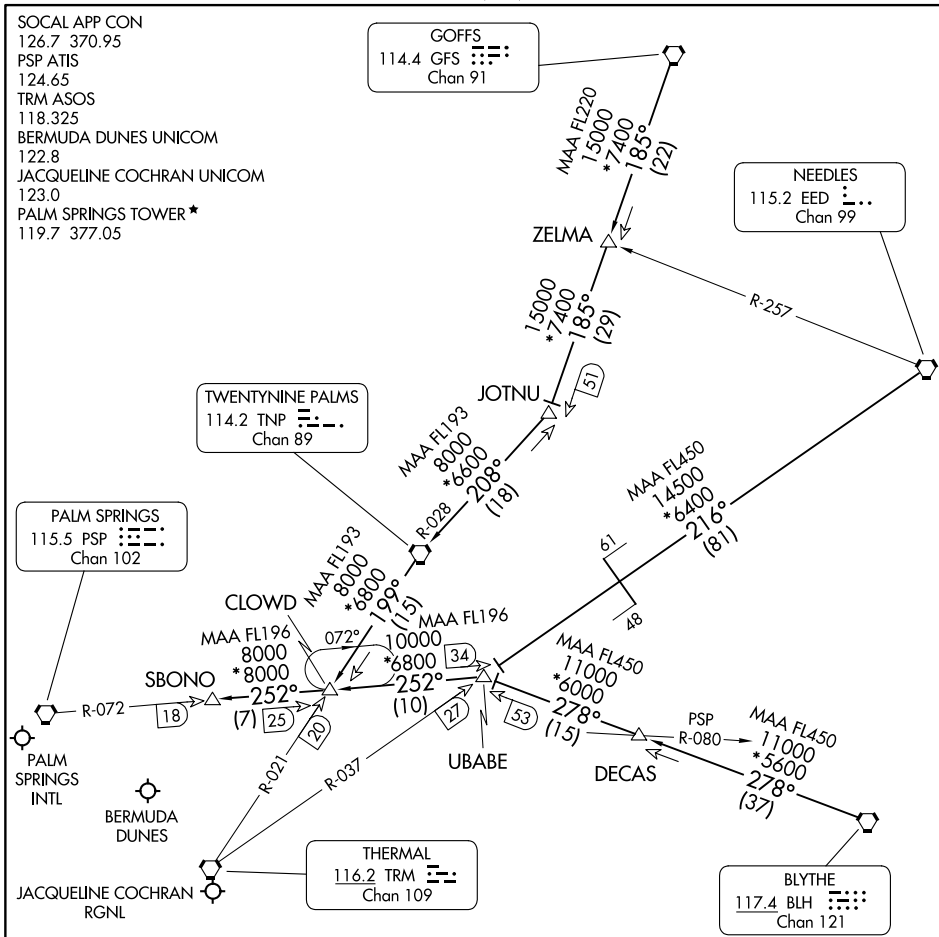
NEEDLES  
 115.2 EED :...:  
 Chan 99

TWENTYNINE PALMS  
 114.2 TNP :...:  
 Chan 89

PALM SPRINGS  
 115.5 PSP :...:  
 Chan 102

THERMAL  
 116.2 TRM :...:  
 Chan 109

BLYTHE  
 117.4 BLH :...:  
 Chan 121



SW-3, 23 JAN 2025 to 20 FEB 2025

SW-3, 23 JAN 2025 to 20 FEB 2025

NOTE: Chart not to scale.

NOTE: DME required.

## ARRIVAL ROUTE DESCRIPTION

BLYTHE TRANSITION (BLH.SBONO1): From over BLH VORTAC on BLH R-278 and PSP R-072 to SBONO DME. Thence. . .

DECAS TRANSITION (DECAS.SBONO1): From over DECAS INT on BLH R-278 and PSP R-072 to SBONO DME. Thence. . .

GOFFS TRANSITION (GFS.SBONO1): From over GFS VORTAC on GFS R-185 and TNP R-028 to TNP VORTAC, then on TNP R-199 and PSP R-072 to SBONO DME. Thence. . .

NEEDLES TRANSITION (EED.SBONO1): From over EED VORTAC on EED R-216 and TRM R-037 to UBABE DME, then on PSP R-072 to SBONO DME. Thence. . .

. . . .From over SBONO DME expect RADAR vectors to final approach course.

# SBONO ONE ARRIVAL

PALM SPRINGS, CALIFORNIA