

WAAS CH 63039 W02A	APP CRS 027°	Rwy Idg TDZE 6303 Apt Elev 6349
---------------------------------	------------------------	---

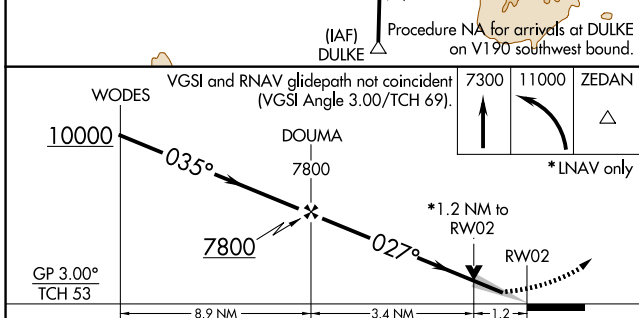
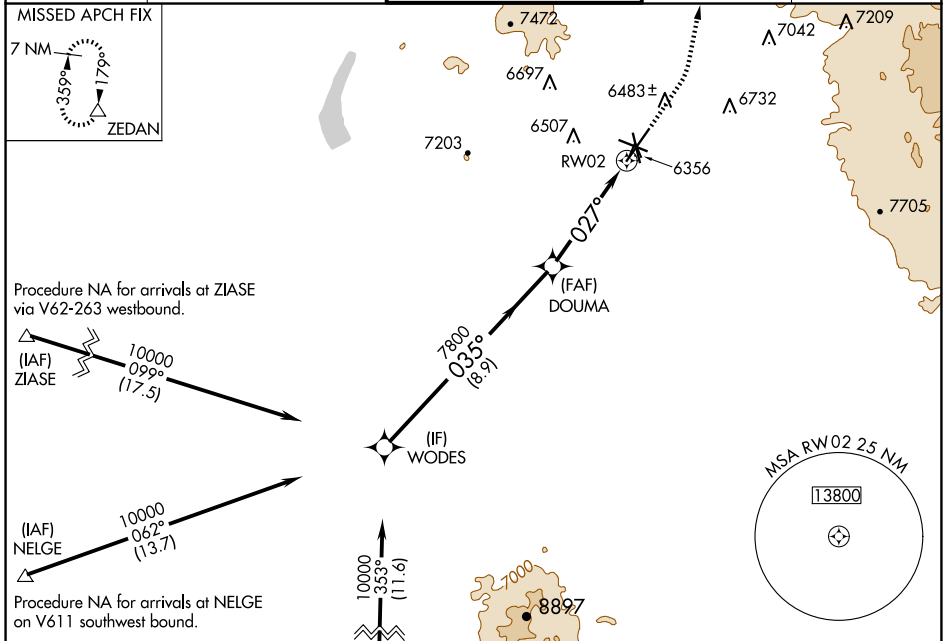
RNAV (GPS) RWY 2

SANTA FE RGNL (SAF')

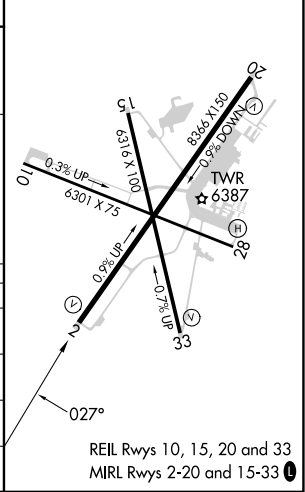
▽ For uncompensated Baro-VNAV systems, LNAV/VNAV NA below -18°C (0°F) or above 45°C (113°F). DME/DME RNP-0.3 NA.

▲ MISSED APPROACH: Climb to 7300 then climbing left turn to 11000 direct ZEDAN and hold.

ATIS 128.55	ALBUQUERQUE CENTER 132.8 346.35	SANTA FE TOWER ★ 119.5 (CTAF) 239.3	GND CON 121.7	UNICOM 122.95
-----------------------	---	---	-------------------------	-------------------------



ELEV 6349	D TDZE 6303
-----------	--------------------



CATEGORY	A	B	C	D
LPV DA		6503-3/4	200 (200-3/4)	
LNAV/VNAV DA		6553-7/8	250 (300-7/8)	
LNAV MDA	6740-1	437 (400-1)	6740-1 1/4	437 (400-1 1/4)
C CIRCLING	6800-1 451 (500-1)	6920-1 571 (600-1)	7340-3 991 (1000-3)	7660-3 1311 (1400-3)

SW-1, 23 JAN 2025 to 20 FEB 2025

SW-1, 23 JAN 2025 to 20 FEB 2025