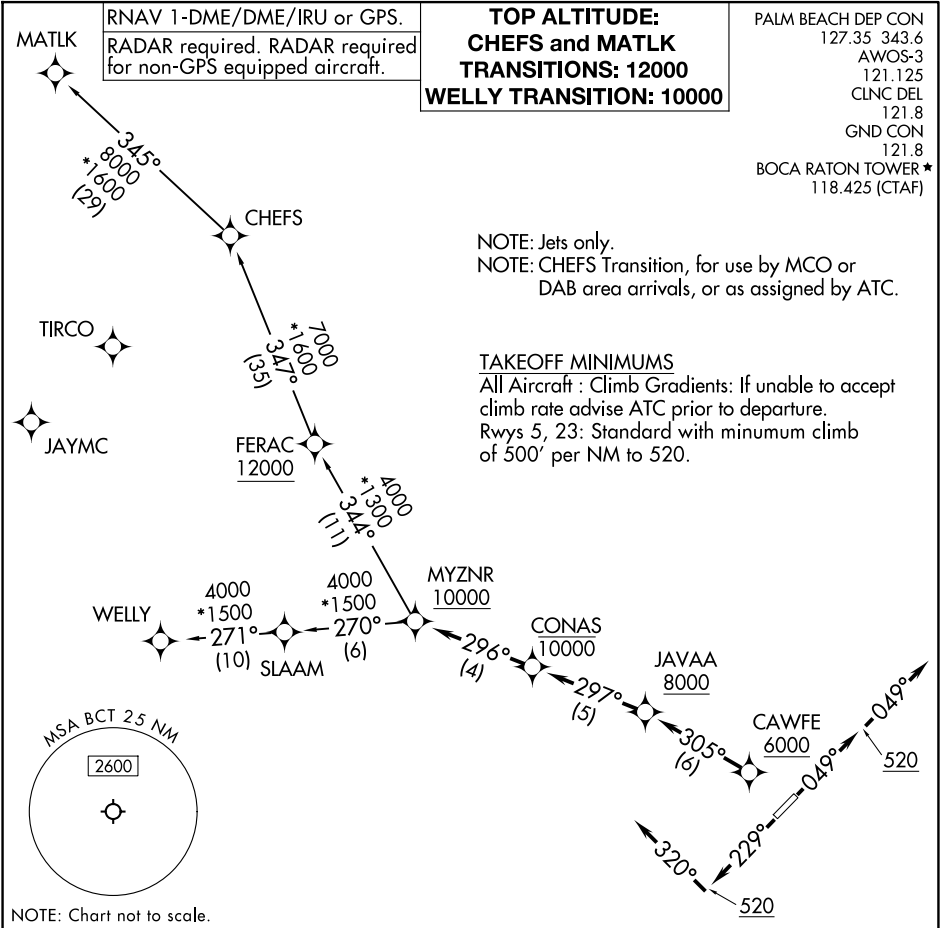


(MYZNR3.MYZNR) 24305

AL-560 (FAA)

BOCA RATON (BCT)  
BOCA RATON, FLORIDA

# MYZNR THREE DEPARTURE (RNAV)



SE-3, 23 JAN 2025 to 20 FEB 2025

SE-3, 23 JAN 2025 to 20 FEB 2025

NOTE: Chart not to scale.

**DEPARTURE ROUTE DESCRIPTION**

TAKEOFF RUNWAY 5: Climb on heading 049° to 520, then on heading 049° or as assigned by ATC, for vectors to cross CAWFE at or above 6000, thence . . .

TAKEOFF RUNWAY 23: Climb on heading 229° to 520, then on heading 320° or as assigned by ATC, for vectors to cross CAWFE at or above 6000, thence . . .

. . . on track 305° to cross JAVA at or above 8000, then on track 297° to cross CONAS at or below 10000, then on track 296° to cross MYZNR at or above 10000. Departures on MATLK and CHEFS Transitions maintain 12000; Departures on WELLY Transition maintain 10000. Expect clearance to filed altitude within 10 minutes after departure.

CHEFS TRANSITION (MYZNR3.CHEFS)  
MATLK TRANSITION (MYZNR3.MATLK)  
WELLY TRANSITION (MYZNR3.WELLY)

MYZNR THREE DEPARTURE (RNAV)  
(MYZNR3.MYZNR) 31OCT24

BOCA RATON, FLORIDA  
BOCA RATON (BCT)