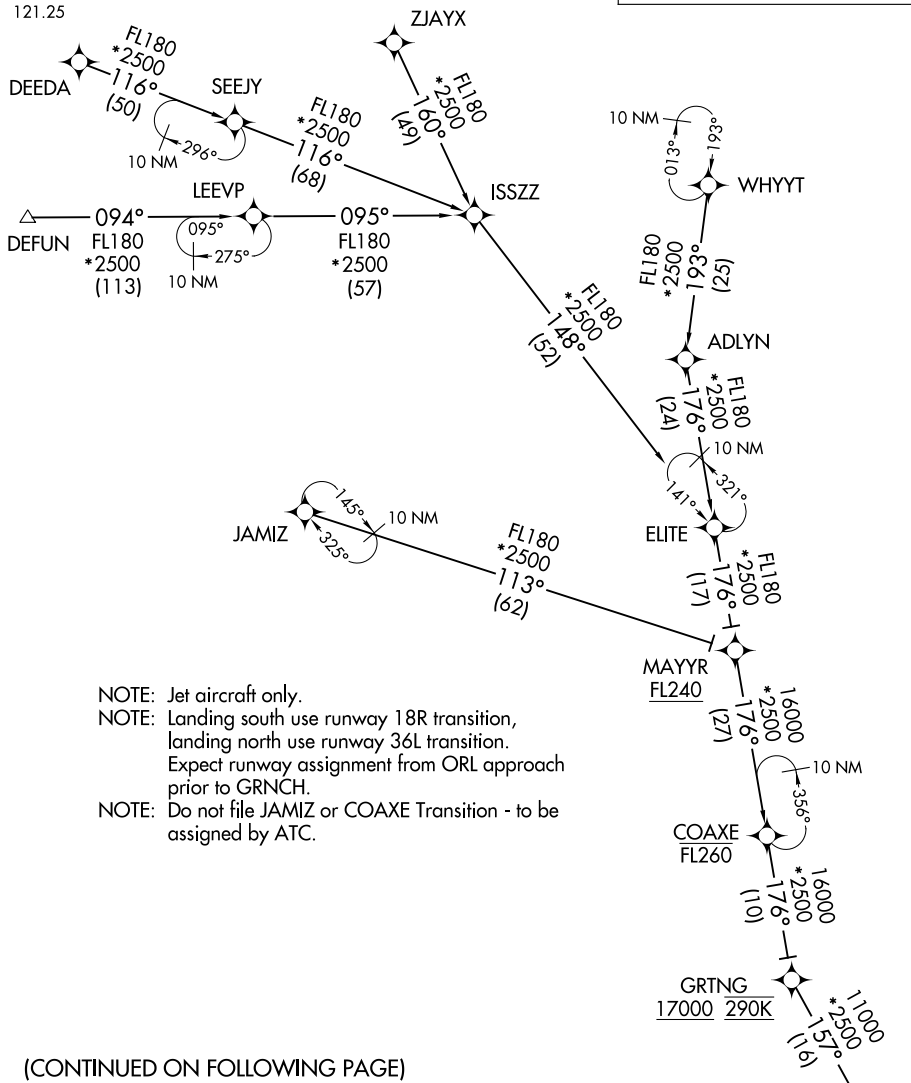


# GRNCH FIVE ARRIVAL (RNAV) Transition Routes

ORLANDO APP CON  
134.05 339.8  
D-ATIS ARR  
121.25

RNAV 1 - DME/DME/IRU or GPS.  
RADAR required.

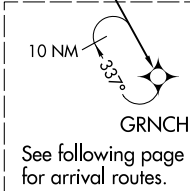


- NOTE: Jet aircraft only.
- NOTE: Landing south use runway 18R transition, landing north use runway 36L transition. Expect runway assignment from ORL approach prior to GRNCH.
- NOTE: Do not file JAMIZ or COAXE Transition - to be assigned by ATC.

(CONTINUED ON FOLLOWING PAGE)

- COAXE TRANSITION (COAXE.GRNCH5)
- DEEDA TRANSITION (DEEDA.GRNCH5)
- DEFUN TRANSITION (DEFUN.GRNCH5)
- JAMIZ TRANSITION (JAMIZ.GRNCH5)
- WHYYT TRANSITION (WHYYT.GRNCH5)
- ZJAYX TRANSITION (ZJAYX.GRNCH5)

NOTE: Chart not to scale.



GRNCH  
See following page for arrival routes.

SE-3, 23 JAN 2025 to 20 FEB 2025

SE-3, 23 JAN 2025 to 20 FEB 2025