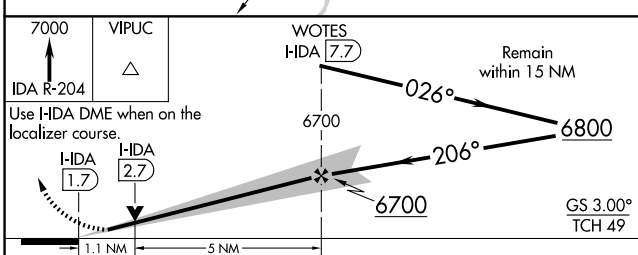
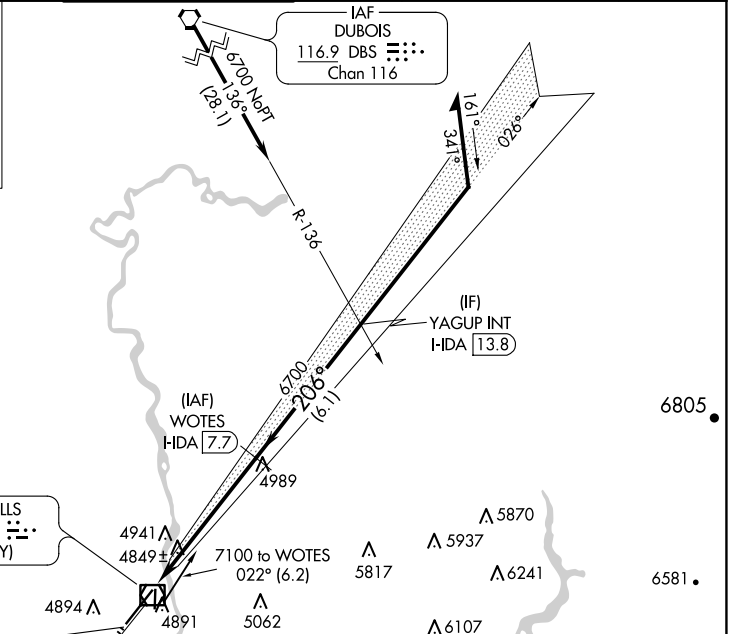
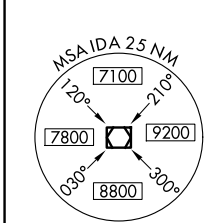
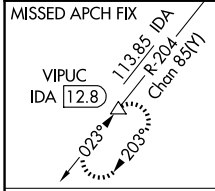


LOC/DME I-HDA <b>111.1</b> Chan <b>48</b>	APP CRS <b>206°</b>	Rwy Idg TDZE Apt Elev	<b>9002</b> <b>4735</b> <b>4744</b>
---	------------------------	-----------------------------	---

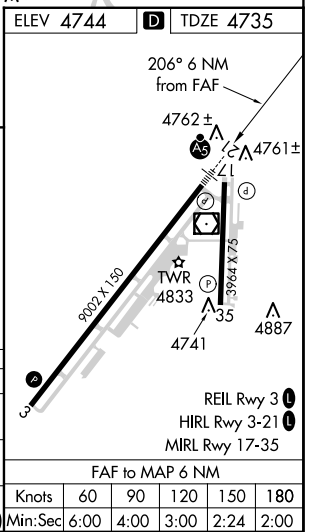
# ILS or LOC RWY 21

IDAHO FALLS RGNL (IDA)

DME required.		MALSR		MISSED APPROACH: Climb to 7000 on IDA VOR/DME R-204 to VIPUC/12.8 DME and hold.											
<p>▼ Circling to Rwy 35 NA at night. For inop ALS, increase S-ILS 21 Cat E visibility to RVR 4000, and S-LOC 21 Cat E visibility to RVR 6000.</p> <p>▲</p>		<p>ATIS <b>135.325</b></p>		<p>SALT LAKE CENTER <b>128.35 239.25</b></p>		<p>IDAHO FALLS TOWER* <b>118.5 (CTAF) 0 257.8</b></p>		<p>GND CON <b>121.7</b></p>		<p>CLNC DEL <b>121.7</b></p>		<p>GCO <b>121.725</b></p>		<p>UNICOM <b>122.95</b></p>	



CATEGORY	A	B	C	D	E
S-ILS 21	4985/24		250 (300-½)		
S-LOC 21	5120/24	385 (400-½)		5120/35 385 (400-¾)	
CIRCLING	5200-1 456 (500-1)	5300-1 556 (600-1)	5400-1¾ 656 (700-1¾)	5420-2¼ 676 (700-2¼)	5420-2½ 676 (700-2½)



NW-1, 23 JAN 2025 to 20 FEB 2025

NW-1, 23 JAN 2025 to 20 FEB 2025