

MILTON, FLORIDA

TACAN RWY 23

TACAN NSE Chan 70	APCH CRS 211°	Rwy Idg TDZE Arprt Elev	6003 183 199
-----------------------------	-------------------------	-------------------------------	---

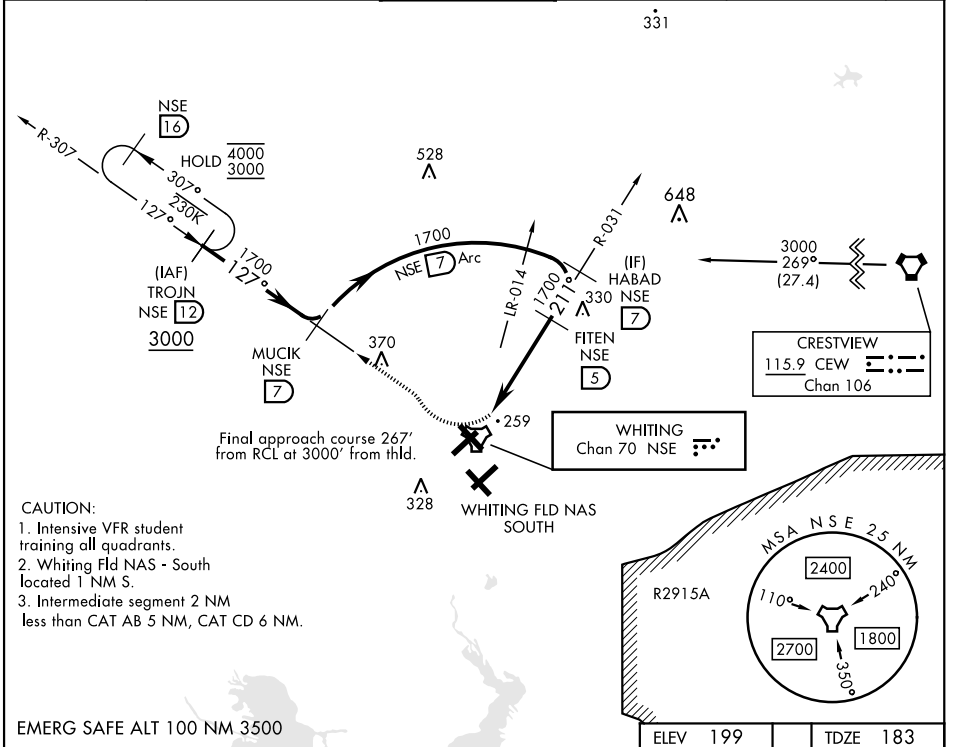
[USN]

WHITING FLD NAS - NORTH (KNSE)

∇ *Circling not authorized S of Rwy 5 and 32.

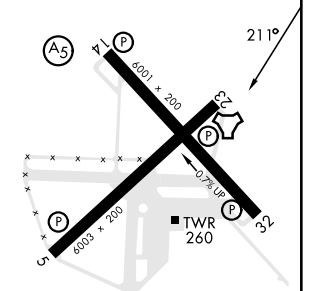
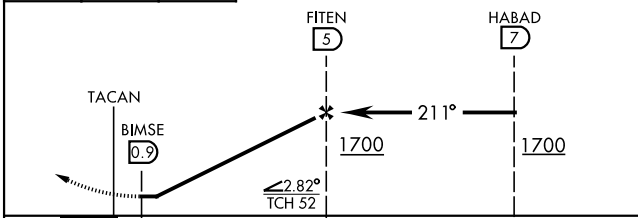
ATIS ★ 290.325	PENSACOLA APP CON 127.35 278.8	NORTH WHITING TOWER ★ 121.4 306.925	GND CON 251.15	CLNC DEL 257.775	ASR
--------------------------	--	--	--------------------------	----------------------------	-----

MISSED APPROACH: Climb to 600. Then climbing right turn to 3000. Intercept NSE TACAN R-307 to TROJN and hold. Continue climb in hold. Contact Pensacola APP CON.



600	3000	TROJN NSE 12
↑	NSE R-307	

ELEV 199	TDZE 183
----------	----------



CATEGORY	A	B	C	D
S-23		520-1	337 (400-1)	
CIRCLING*	560-1 361 (400-1)	660-1 461 (500-1)	660-1½ 461 (500-1½)	760-2 561 (600-2)

HIRL all rwy's

MILTON, FLORIDA
Amdt 5 28DEC23

30°43'N-87°01'W

WHITING FLD NAS - NORTH (KNSE)

TACAN RWY 23

SE-3, 23 JAN 2025 to 20 FEB 2025

SE-3, 23 JAN 2025 to 20 FEB 2025