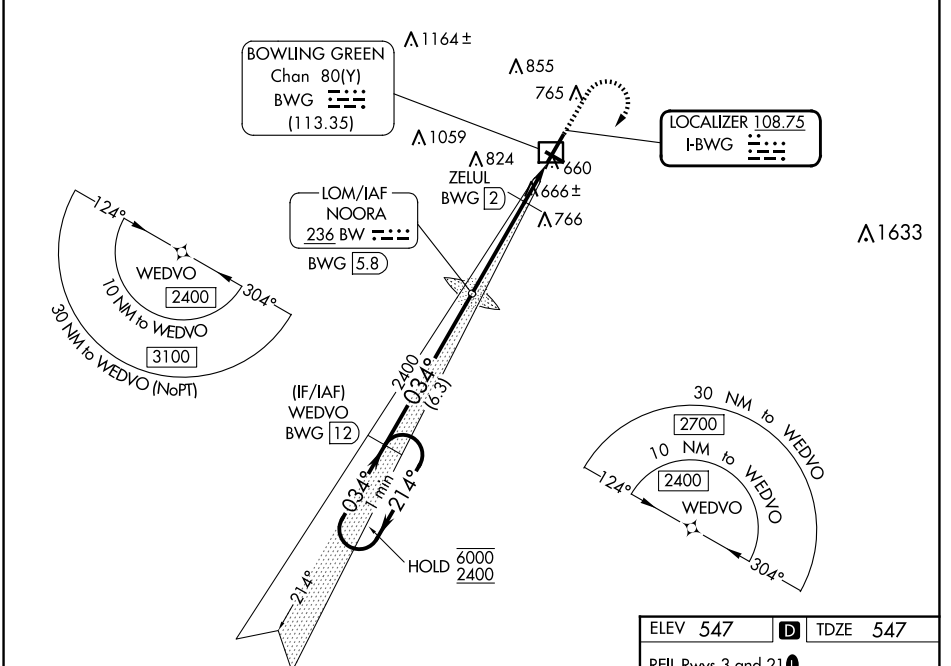


LOC I-BWG	APP CRS	Rwy Idg	6500
108.75	034°	TDZE	547
		Apt Elev	547

ILS Z or LOC Z RWY 3

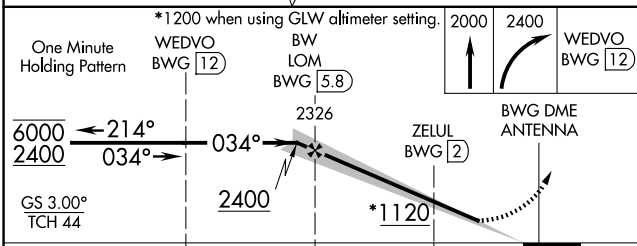
BOWLING GREEN-WARREN COUNTY RGNL (BWG)

RNP APCH - GPS.		MISSED APPROACH: Climb to 2000 then climbing right turn to 2400 direct WEDVO and hold.	
Circling Rwy 30 NA at night. † DME from BWG DME.		ASOS	MEMPHIS CENTER
		127.825	133.85 285.5
			UNICOM
			123.0 (CTAF) 0



SE-1, 23 JAN 2025 to 20 FEB 2025

SE-1, 23 JAN 2025 to 20 FEB 2025



ELEV 547	D	TDZE 547
REIL Rwys 3 and 21 MIRL Rwy 12-30 HIRL Rwy 3-21		
FAF to MAP 5.4 NM		
Knots	60	90
Min:Sec	5:24	3:36
	120	150
	2:42	2:10
	180	1:48

CATEGORY	A	B	C	D
S-ILS 3	797-3/4 250 (300-3/4)			
S-LOC 3*	1120-1	573 (600-1)	1120-1 5/8	573 (600-1 5/8)
C CIRCLING	1120-1	573 (600-1)	1160-1 3/4	1200-2
			613 (700-1 3/4)	653 (700-2)
ZELUL FIX MINIMUMS † (DME REQUIRED)				
S-LOC 3*	920-1 373 (400-1)			
C CIRCLING	1080-1	1120-1	1160-1 3/4	1200-2
	533 (600-1)	573 (600-1)	613 (700-1 3/4)	653 (700-2)