

SC-4, 23 JAN 2025 to 20 FEB 2025

NEW ORLEANS APP CON
 125.5 350.35
 MSY D-ATIS
 127.55
 NEW ATIS
 124.9

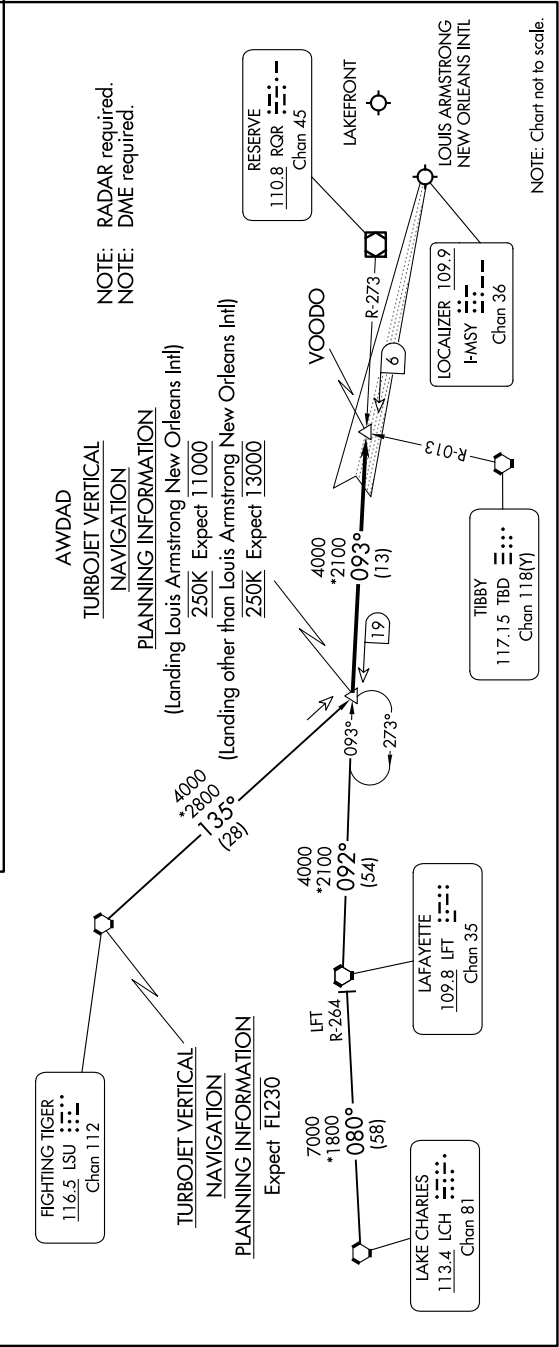
ARRIVAL ROUTE DESCRIPTION

FIGHTING TIGER TRANSITION [LSU.AWDAD1]: From over LSU VORTAC on LSU R-135 to AWDAD INT.

LAFAYETTE TRANSITION [LFT.AWDAD1]: From over LFT VOTRAC on LFT R-092 and RQR R-273 to AWDAD INT.

LAKE CHARLES TRANSITION [LCH.AWDAD1]: From over LCH VORTAC on LCH R-080 and LFT R-264 to LFT VORTAC then on LFT R-092 and RQR R-273 to AWDAD INT.

From over AWDAD INT on RQR VOR/DME R-273 to VOODO INT.
LANDING KMSY RWY 11: Intercept I-MSY localizer and expect clearance for ILS RWY 11 approach.
LANDING OTHER: Expect vectors to final approach course.



SC-4, 23 JAN 2025 to 20 FEB 2025

NOTE: Chart not to scale.