

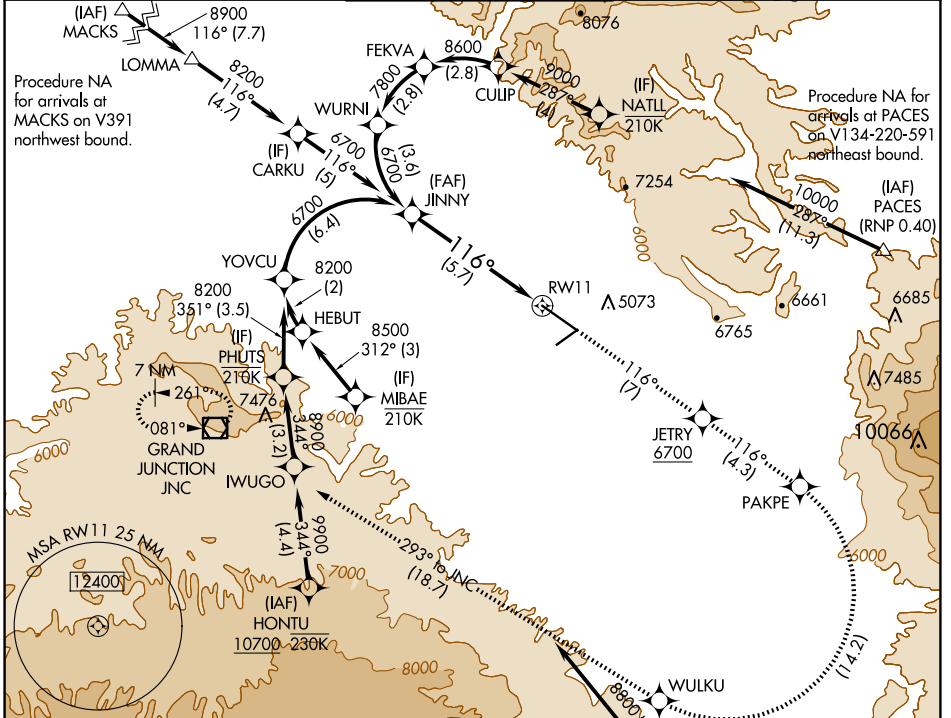
APP CRS <b>116°</b>	Rwy ldg TDZE Apt Elev	<b>9339</b> <b>4840</b> <b>4861</b>
------------------------	-----------------------------	---

# RNAV (RNP) Z RWY 11

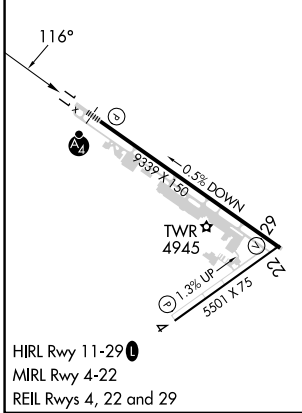
GRAND JUNCTION RGNL (GJT)

RNP AR APCH - GPS.		MALSF	MISSED APPROACH: Climb to 9000 on track 116° to JETRY, cross JETRY at or above 6700, and track 116° to PAKPE, right turn to WULKU, and track 293° to JNC VOR/DME and hold.	
<p>▼ For uncompensated Baro-VNAV systems, procedure NA below -17°C or above 54°C. For inoperative ALS, increase RNP 0.30 all Cats visibility to 1½ SM.</p>				

ATIS <b>118.55</b>	DENVER APP CON * <b>119.7 317.4</b>	GRAND JUNCTION TOWER * <b>118.1 (CTAF) 257.8</b>	GND CON <b>121.7 257.8</b>	UNICOM <b>122.95</b>
-----------------------	--	---	-------------------------------	-------------------------



ELEV 4861	<b>D</b>	TDZE 4840
-----------	----------	-----------



HIRL Rwy 11-29  
MIRL Rwy 4-22  
REIL Rwy 4, 22 and 29

JINNY	9000	JETRY	PAKPE	WULKU	JNC
6700	tr 116°	6700	tr 116°	tr 293°	
See planview for multiple IF locations.					
GP 3.00°	5.7 NM				
TCH 50	RWY 11				
CATEGORY	A	B	C	D	
RNP 0.10 DA		5183/40	343 (400-¾)		
RNP 0.30 DA		5346-1¼	506 (500-1¼)		

## AUTHORIZATION REQUIRED

SW-1, 23 JAN 2025 to 20 FEB 2025

SW-1, 23 JAN 2025 to 20 FEB 2025