

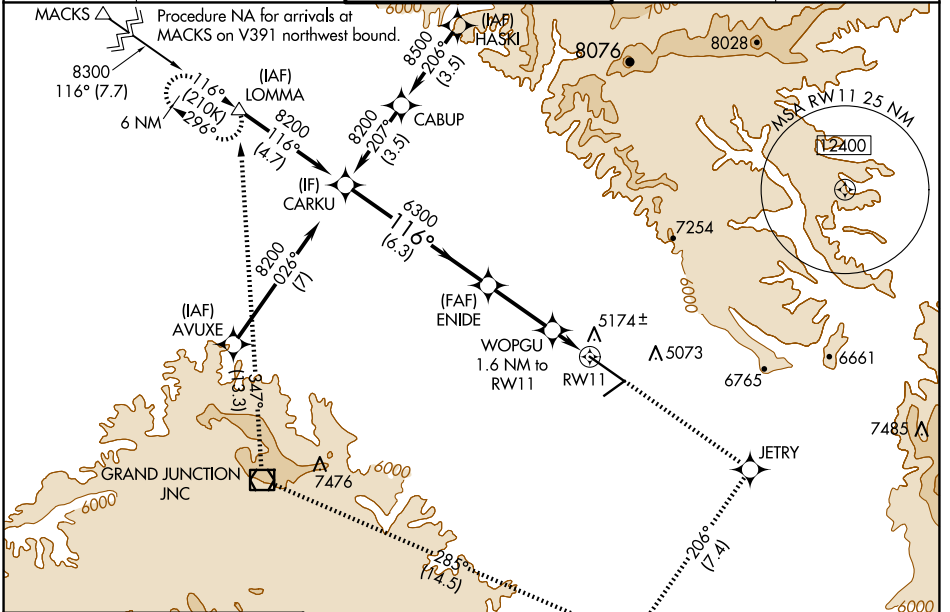
WAAS CH 97514 W11A	APP CRS 116°	Rwy Idg TDZE Apt Elev	9339 4840 4861
--	------------------------	-----------------------------	---

RNAV (GPS) Y RWY 11

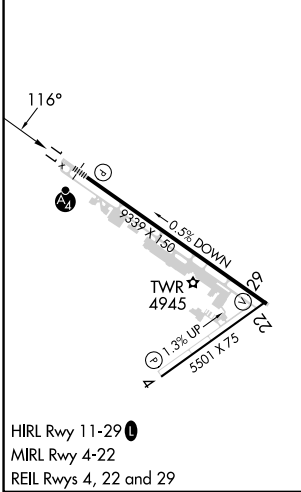
GRAND JUNCTION RGNL (GJT)

RNP APCH - GPS.		MALSF		MISSED APPROACH: Climb to 6700 direct JETRY then climbing right turn to 9000 on track 206° to AYEDY and track 285° to JNC VOR/DME and track 347° to LOMMA and hold. *Missed approach requires minimum climb of 206 feet per NM to 7740.	
<p>⚠ Circling NA for Cat D north of Rwy 11-29. For uncompensated Baro-VNAV systems, LNAV/VNAV NA below -17°C or above 54°C. For inop ALS, increase LPV all Cats visibility to RVR 4500 and increase LNAV Cat C/D visibility to 1 1/2. Inop table does not apply to LPV*.</p>					

ATIS 118.55	DENVER APP CON * 119.7 317.4	GRAND JUNCTION TOWER * 118.1 (CTAF) 0 257.8	GND CON 121.7 257.8	UNICOM 122.95
-----------------------	--	---	-------------------------------	-------------------------



ELEV 4861	D	TDZE 4840
-----------	----------	-----------



CARKU	6700	JETRY	9000	AYEDY	JNC	LOMMA
↑	◆	↷ tr 206°	△	tr 285°	tr 347°	△
8200	6300	5400	5400	5400	5400	5400
GP 3.00°	ENIDE	WOPGU	WOPGU	WOPGU	WOPGU	WOPGU
TCH 51	6300	1.6 NM to RW11	1.6 NM to RW11	1.6 NM to RW11	1.6 NM to RW11	1.6 NM to RW11
	6.3 NM	2.8 NM	1.6 NM	1.6 NM	1.6 NM	1.6 NM
CATEGORY	A	B	C	D		
LPV DA*		5040/40	200 (200-3/4)			
LPV DA		5120/40	280 (300-3/4)			
LNAV/VNAV DA		5317/60	477 (500-1 1/4)			
LNAV MDA*	5280/40	440 (500-3/4)	5280/50	440 (500-1)		
LNAV MDA	5360/40	520 (500-3/4)	5360-1 1/4	520 (500-1 1/4)		
CIRCLING	5380-1	5520-1	5840-3	979 (1000-3)		
	519 (600-1)	659 (700-1)				

SW-1, 23 JAN 2025 to 20 FEB 2025

SW-1, 23 JAN 2025 to 20 FEB 2025