

WAAS CH <b>45534</b> <b>W28A</b>	APP CRS <b>281°</b>	Rwy Idg TDZE Apt Elev	<b>8005</b> <b>40</b> <b>40</b>
--	------------------------	-----------------------------	---------------------------------------

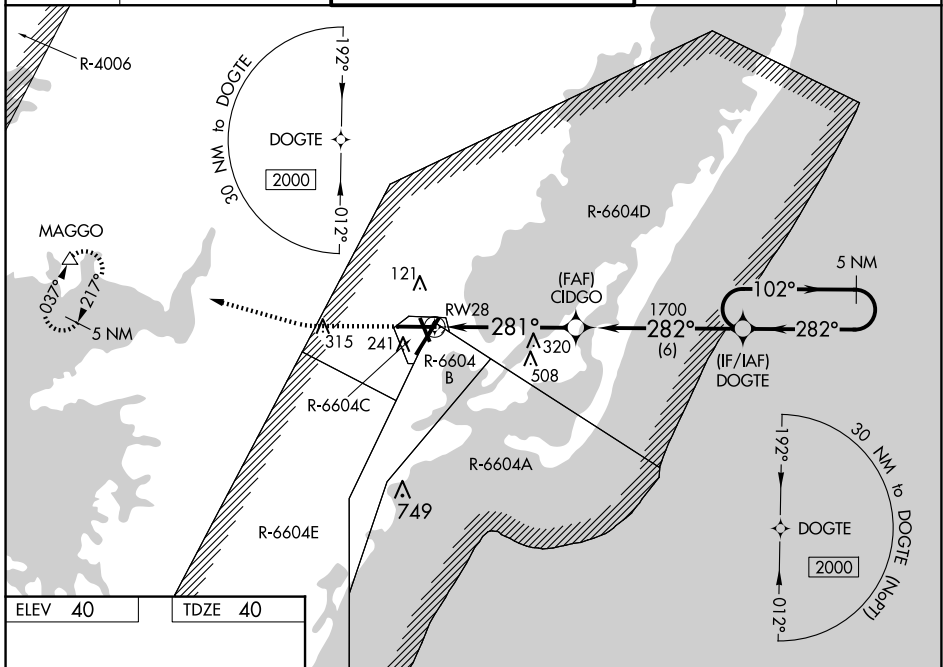
# RNAV (GPS) RWY 28

WALLOPS FLIGHT FACILITY (WAL)

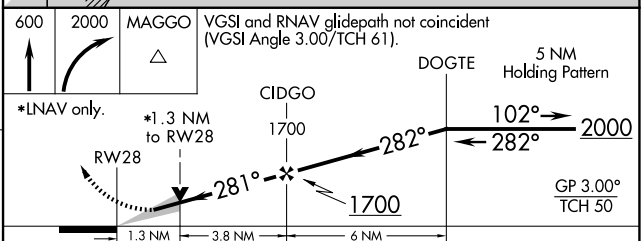
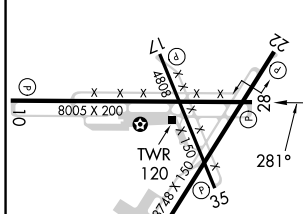
**▼** For uncompensated Baro-VNAV systems, LNAV/VNAV NA below -11°C (13°F) or above 54°C (130°F). DME/DME RNP-0.3 NA. When local altimeter setting not received, use Salisbury altimeter setting: increase LPV DA to 343 and all Cats visibility ¼ mile; increase LNAV/VNAV DA to 453 and all Cats visibility ¼ mile; increase all MDA 60 feet and LNAV Cats C/D and Circling Cat C visibility ¼ mile. Baro-VNAV and YDP NA when using Salisbury altimeter setting.

**▲** MISSED APPROACH: Climb to 600 then climbing right turn to 2000 direct MAGGO and hold.

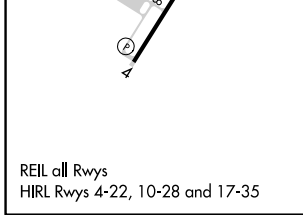
ASOS <b>119.175</b>	PATUXENT APP CON ★ <b>127.95 314.0</b>	WALLOPS TOWER ★ <b>126.5 (CTAF) 306.975 (CTAF)</b>	GND CON <b>127.875 269.325</b>	CLNC DEL <b>121.7</b>
------------------------	---	---	-----------------------------------	--------------------------



ELEV 40	TDZE 40
---------	---------



CATEGORY	A	B	C	D
LPV DA		290-¾	250 (300-¾)	
LNAV/VNAV DA		400-1½	360 (400-1½)	
LNAV MDA	520-1	480 (500-1)	520-1¾	480 (500-1½)
<b>☐</b> CIRCLING	600-1	560 (600-1)	620-1½ 580 (600-1½)	860-2¾ 820 (900-2¾)



NE-3, 23 JAN 2025 to 20 FEB 2025

NE-3, 23 JAN 2025 to 20 FEB 2025