

WAAS CH <b>81915</b> <b>W23A</b>	APP CRS <b>231°</b>	Rwy Idg TDZE Apt Elev	<b>5395</b> <b>721</b> <b>721</b>
--	------------------------	-----------------------------	---

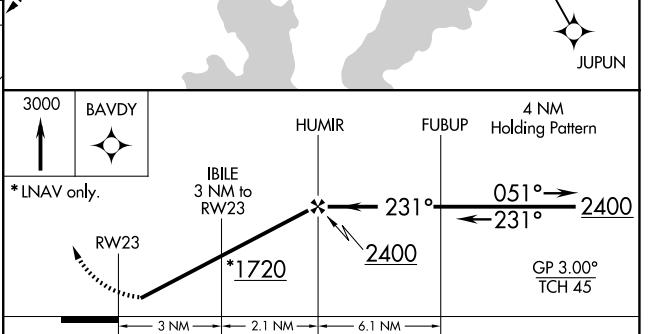
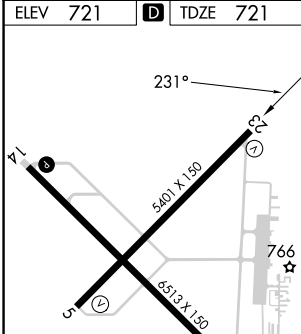
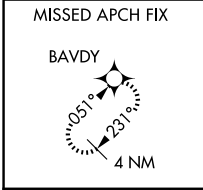
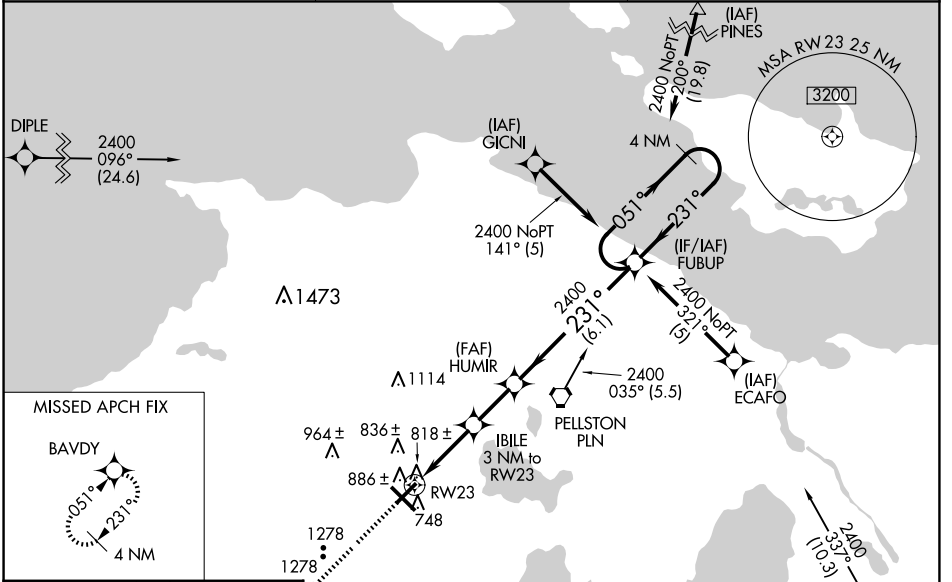
# RNAV (GPS) RWY 23

PELLSTON RGNL/EMMET COUNTY (PLN)

**⚠** Baro-VNAV NA when using Harbor Springs altimeter setting. For uncompensated Baro-VNAV systems, LNAV/VNAV NA below -16°C (4°F) or above 47°C (116°F). DME/DME RNP-0.3 NA. Rwy 23 helicopter visibility reduction below 3/4 SM NA. When local altimeter setting not received, use Harbor Springs altimeter setting; increase LPV DA to 1087 feet, LNAV/VNAV DA to 1139 feet and all visibilities 1/2 SM; increase all MDA 40 feet. Circling Rwy 5, 14, 23 NA at night.

**MISSED APPROACH:**  
Climb to 3000 direct BAVDY and hold.

ASOS <b>119.025</b>	MINNEAPOLIS CENTER <b>134.6 354.05</b>	UNICOM <b>123.0 (CTAF)</b>
------------------------	---	-------------------------------



CATEGORY	A	B	C	D
LPV DA		1057-1¼	336 (400-1¼)	
LNAV/VNAV DA		1109-1¼	388 (400-1¼)	
LNAV MDA	1240-1	519 (600-1)	1240-1½ 519 (600-1½)	1240-1¾ 519 (600-1¾)
CIRCLING	1280-1 559 (600-1)	1320-1 599 (600-1)	1560-2½ 839 (900-2½)	1660-3 939 (1000-3)

HIRL Rwy 14-32  
MIRL Rwy 5-23  
REIL Rwy 5, 14, and 23

EC-1, 23 JAN 2025 to 20 FEB 2025

EC-1, 23 JAN 2025 to 20 FEB 2025