

WAAS CH <b>99423</b> <b>W33A</b>	APP CRS <b>336°</b>	Rwy Idg <b>5105</b> TDZE <b>50</b> Apt Elev <b>54</b>
--	------------------------	---

# RNAV (GPS) RWY 33

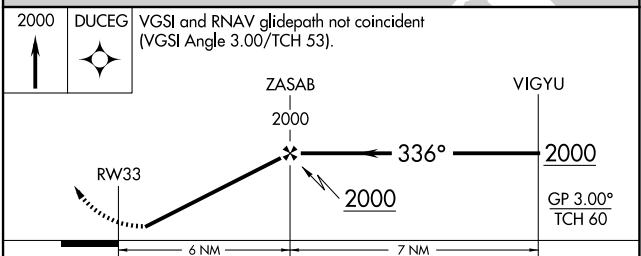
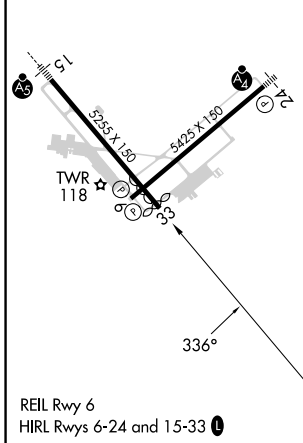
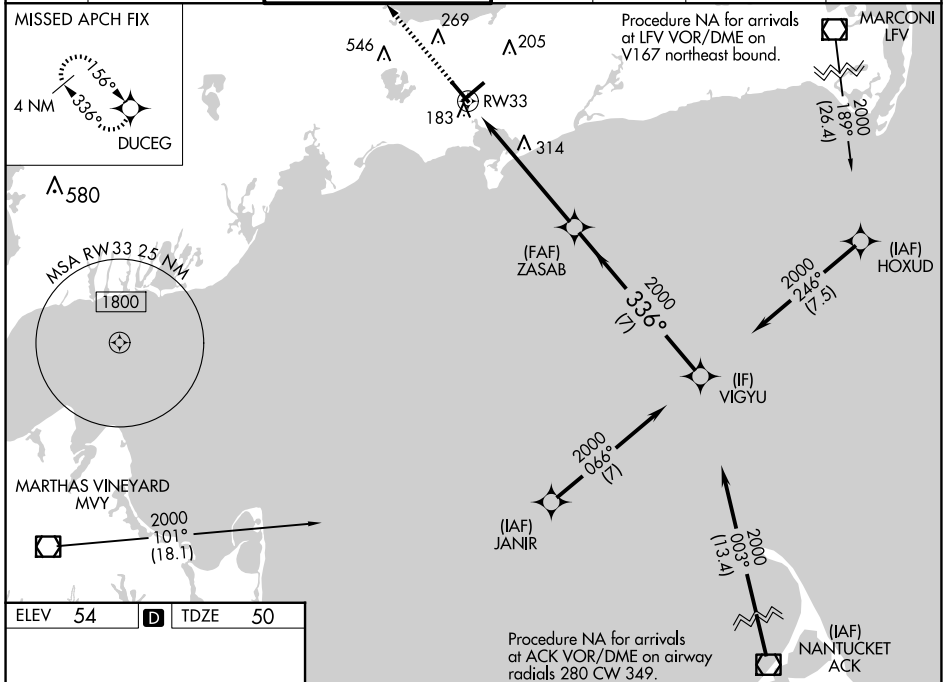
CAPE COD GATEWAY (HYA)

RNP APCH - GPS

▼ Baro-VNAV NA when using Chatham altimeter setting. For uncompensated Baro-VNAV systems, LNAV/VNAV NA below -15°C or above 43°C. When local altimeter setting not received, use Chatham altimeter setting: increase LPV DA to 332 feet; increase LNAV/VNAV DA to 393 feet; increase all MDAs 40 feet and visibility Cats C and D ¼ SM. Rwy 33 helicopter visibility reduction below ¾ SM NA. Circling Rwy 24 at night, operational VGSI required, remain on or above VGSI glidepath until threshold.

MISSED APPROACH: Climb to 2000 direct DUCEG and hold.

ATIS <b>123.8</b>	BOSTON APP CON <b>118.2 284.6</b>	HYANNIS TOWER ★ <b>119.5 (CTAF) 0 257.8</b>	GND CON <b>118.45</b>	CLNC CON <b>125.15</b>	CLNC DEL <b>120.125</b> (When twr closed)	UNICOM <b>122.95</b>
----------------------	--------------------------------------	--	--------------------------	---------------------------	---	-------------------------



CATEGORY	A	B	C	D
LPV DA		300-1	250 (300-1)	
LNAV/VNAV DA		361-1	311 (400-1)	
LNAV MDA	620-1	570 (600-1)	620-1½	570 (600-1½)
<b>C</b> CIRCLING	620-1	566 (600-1)	860-2¼ 806 (900-2¼)	860-2½ 806 (900-2½)

NE-1, 23 JAN 2025 to 20 FEB 2025

NE-1, 23 JAN 2025 to 20 FEB 2025