

WAAS CH <b>45799</b> <b>W06A</b>	APP CRS <b>066°</b>	Rwy Idg <b>5019</b> TDZE <b>45</b> Apt Elev <b>54</b>
--	------------------------	---

# RNAV (GPS) RWY 6

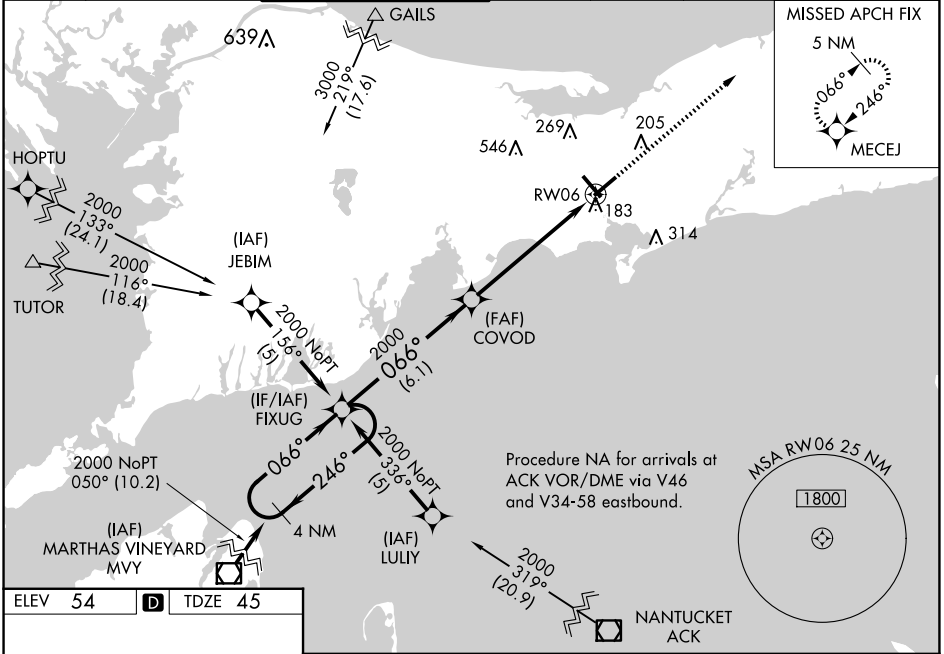
CAPE COD GATEWAY (HYA)

RNP APCH - GPS

▼ Baro-VNAV NA below -1.5°C. Baro-VNAV NA when using Chatham altimeter setting. When local altimeter setting not received, use Chatham altimeter setting and increase LPV DA to 348 feet; increase LNAV/VNAV DA to 475 feet and increase LNAV/VNAV all Cats visibility 1/8 SM; increase all MDAs 40 feet; LNAV Cats C and D visibility 1/8 SM; Circling Cats C and D visibility 1/4 SM. Circling Rwy 24 at night, operational VGSI required, remain on or above VGSI glidepath until threshold. Rwy 6 helicopter visibility reduction below 3/4 SM NA.

MISSED APPROACH:  
Climb to 1700 direct  
MECEJ and hold.

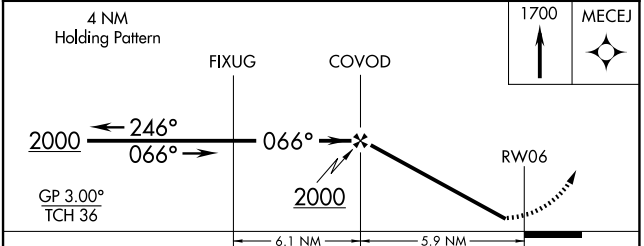
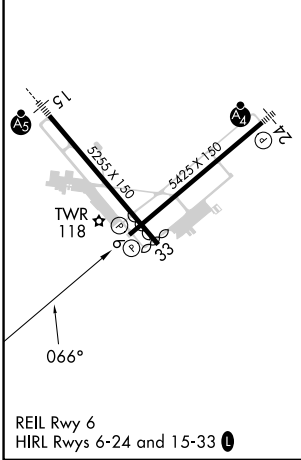
ATIS <b>123.8</b>	BOSTON APP CON <b>118.2 284.6</b>	HYANNIS TOWER ★ <b>119.5 (CTAF) 0 257.8</b>	GND CON <b>118.45</b>	CLNC DEL <b>125.15</b>	CLNC DEL <b>120.125</b> (When twr closed)	UNICOM <b>122.95</b>
----------------------	--------------------------------------	--	--------------------------	---------------------------	---	-------------------------



NE-1, 23 JAN 2025 to 20 FEB 2025

NE-1, 23 JAN 2025 to 20 FEB 2025

ELEV 54	<b>D</b>	TDZE 45
---------	----------	---------



CATEGORY	A	B	C	D
LPV DA	316-1		271 (300-1)	
LNAV/VNAV DA	443-1½		398 (400-1½)	
LNAV MDA	480-1	435 (500-1)	480-1¼ 435 (500-1¼)	480-1½ 435 (500-1½)
<b>C</b> CIRCLING	560-1 506 (600-1)	580-1 526 (600-1)	860-2¼ 806 (900-2¼)	860-2½ 806 (900-2½)