

WAAS CH <b>45738</b> <b>W36A</b>	APP CRS <b>360°</b>	Rwy Idg 5298
		TDZE 678
		Apt Elev 682

# RNAV (GPS) RWY 36

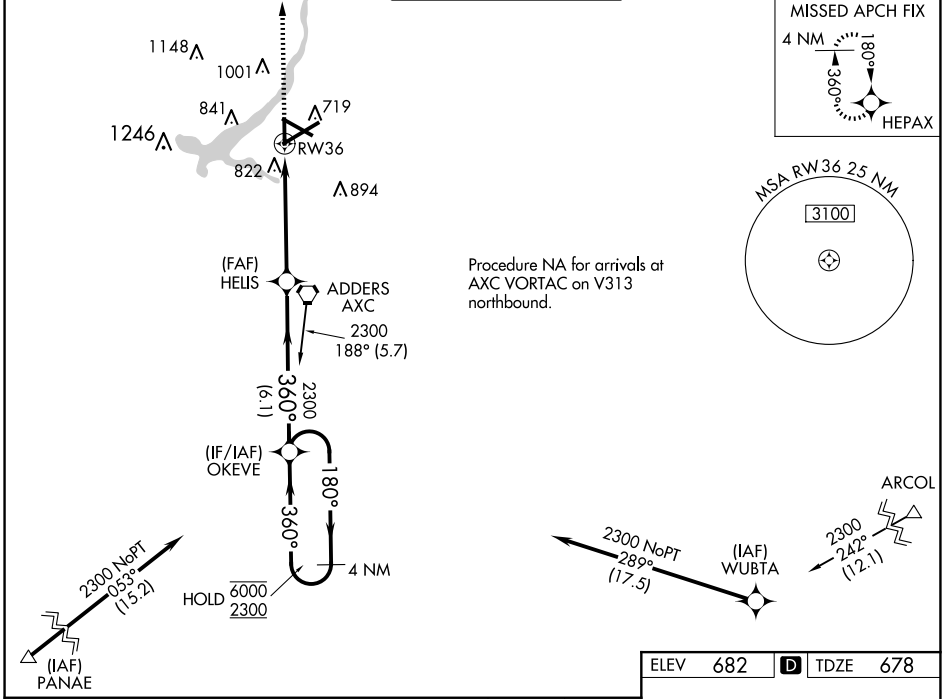
DECATUR (DEC)

RNP APCH

▼ Baro-VNAV and VDP NA when using Lincoln altimeter setting. For uncompensated Baro-VNAV systems, LNAV/VNAV NA below -19°C or above 54°C. When local altimeter setting not received, use Lincoln altimeter setting and increase all DA/MDA 80 feet, increase LPV all Cats visibility ¼ SM, LNAV/VNAV all Cats visibility ¼ SM, LNAV Cat C/D and Circling Cat C/D visibility ¾ SM.

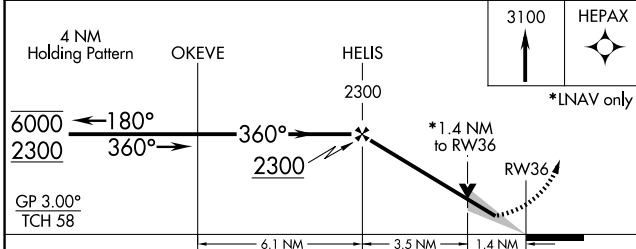
MISSED APPROACH: Climb to 3100 direct HEPAX and hold.

ATIS <b>126.35</b>	CHAMPAIGN APP CON* <b>132.85 290.225</b>	DECATUR TOWER* <b>118.9(CTAF) 0 291.775</b>	GND CON <b>121.75 291.775</b>	UNICOM <b>122.95</b>
-----------------------	---	--	----------------------------------	-------------------------



EC-3, 23 JAN 2025 to 20 FEB 2025

EC-3, 23 JAN 2025 to 20 FEB 2025



ELEV 682	TDZE 678
----------	----------

HIRL Rwy 6-24  
MIRL Rws 12-30 and 18-36

CATEGORY	A	B	C	D
LPV DA	984-7/8		306 (400-7/8)	
LNAV/VNAV DA	1082-1 1/8		404 (400-1 1/8)	
LNAV MDA	1180-1	502 (500-1)	1180-1 3/8	502 (500-1 3/8)
CIRCLING	1180-1 498 (500-1)	1240-1 558 (600-1)	1360-2 678 (700-2)	1360-2 1/4 678 (700-2 1/4)