

MAYPORT, FLORIDA

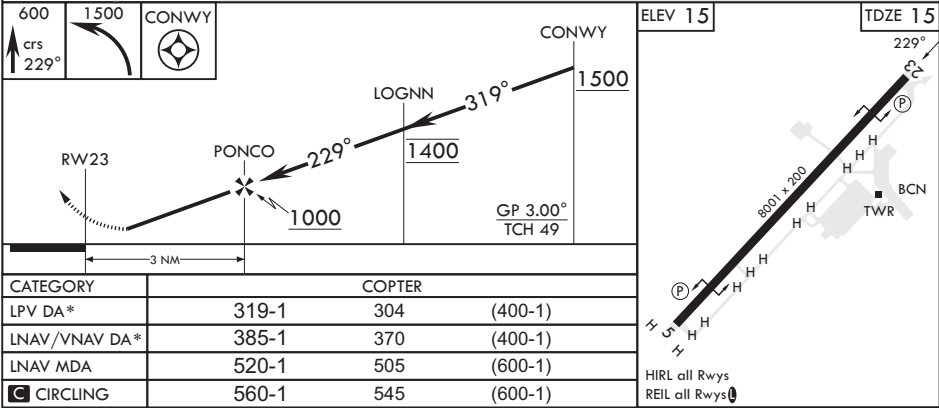
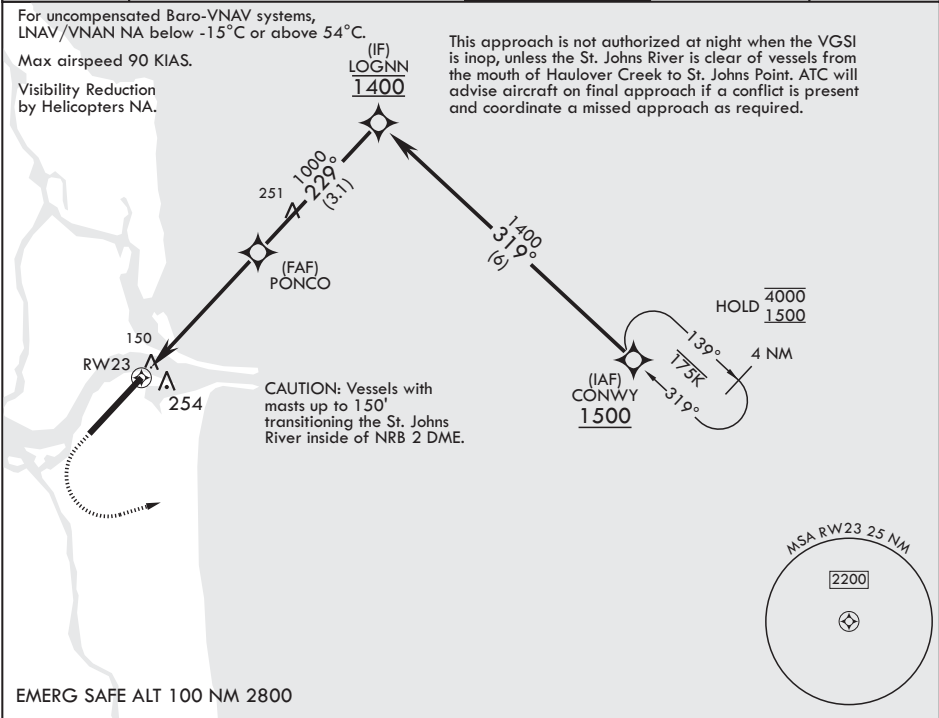
COPTER RNAV (GPS) RWY 23

WAAS CH 45485 W23B	APCH CRS 229°	Rwy ldg TDZE Arpt Elev	8001 15 15
--------------------------	------------------	------------------------------	------------------

- (USN)
MAYPORT NS (ADM DAVID L MC DONALD FLD) (KNRB)

RNP APCH	MISSED APPROACH: Climb to 600 then climbing left turn to 1500 direct to CONWY and hold.
RADAR required	
* LPV and LNAV/VNAV procedures are authorized only when the St. Johns River is clear of vessels from the mouth of Haulover Creek to St. Johns Point. ATC will advise aircraft on final approach if a conflict is present and coordinate a missed approach as required. Does not apply to practice approaches in VMC.	

ATIS ★ 236.775	JACKSONVILLE APP CON/DEP CON 124.9 308.4	TOWER ★ 118.75 239.3 0	GND CON 126.5 233.7	ASR/PAR
-------------------	---	---------------------------	------------------------	---------



MAYPORT, FLORIDA 30°23'N - 81°25'W MAYPORT NS (ADM DAVID L MC DONALD FLD) (KNRB)

Amdt 1 05SEP24

COPTER RNAV (GPS) RWY 23

SE-3, 23 JAN 2025 to 20 FEB 2025

SE-3, 23 JAN 2025 to 20 FEB 2025