

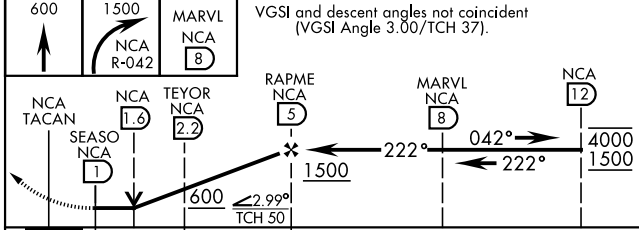
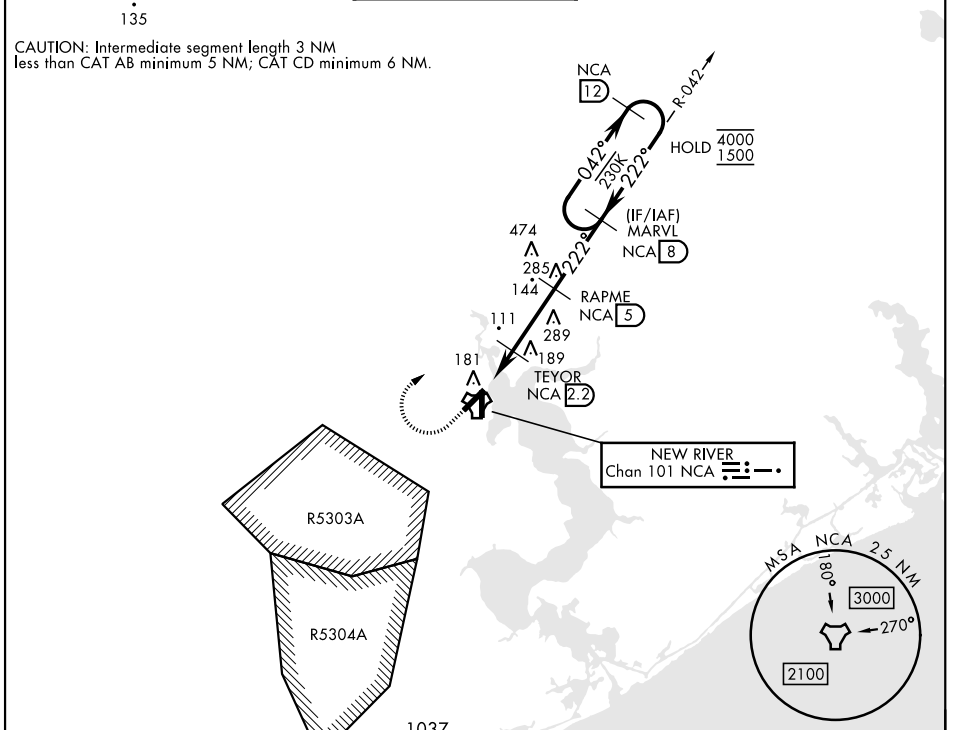
TACAN RWY 23

TACAN NCA Chan 101	APCH CRS 222°	Rwy Ldg TDZE Arprt Elev	5125 24 26	[USN] NEW RIVER MCAS (MCCUTCHEON FLD) (KNCA)
------------------------------	-------------------------	-------------------------------	---------------------------------------	--

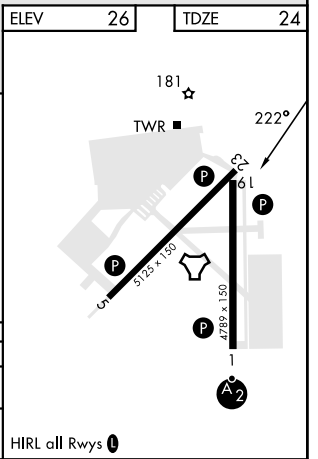
RADAR required

MISSED APPROACH: Climb to 600 then climbing right turn to 1500, intercept NCA R-042 to MARVL and hold.

ATIS ★ 288.325	CHERRY POINT APP CON 119.35 377.175	TOWER ★ 134.95 (CTAF) 0★ 360.2	GND CON 121.8 254.275	CLNC DEL 269.25	ASR/PAR
--------------------------	---	---	---------------------------------	---------------------------	---------



EMERG SAFE ALT 100 NM 3400	VGSi and descent angles not coincident (VGSi Angle 3.00/TCH 37).							
CATEGORY	A		B		C		D	
S-23	440-1	416 (500-1)	440-1 1/8	416 (500-1 1/8)				
CIRCLING	500-1	474 (500-1)	700-2 674 (700-2)	700-2 1/4 674 (700-2 1/4)				



TACAN RWY 23

SE-2, 23 JAN 2025 to 20 FEB 2025

SE-2, 23 JAN 2025 to 20 FEB 2025