

# DEKAL NINE ARRIVAL

FORT LAUDERDALE, FLORIDA

SE-3, 23 JAN 2025 to 20 FEB 2025

- MIAMI APP CON 119.45 290.325
- FL D-ATIS 135.0
- FYE ATIS 119.85
- HWO ATIS 135.475
- OPF ATIS 125.9
- PMP ATIS 120.55

**FORT LAUDERDALE**  
114.4 FL  
Chan 91

**FORT LAUDERDALE EXEC**  
ldg KFXE, KELL, KOPF, KHWO, KPMP

**FORT LAUDERDALE/ HOLLYWOOD INTL**  
R-121

**NORTH PERRY**  
EXEC

**MIAMI-OPA LOCKA**  
EXEC

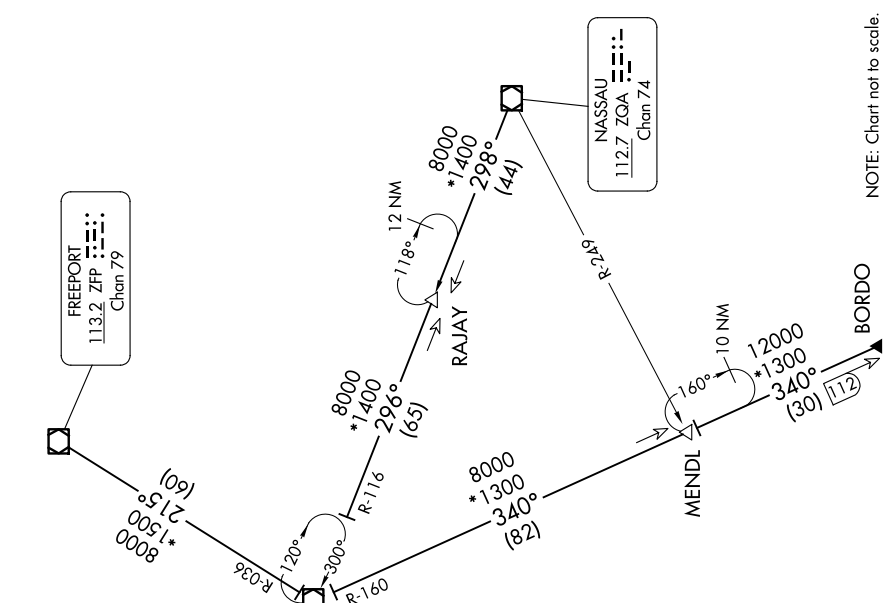


**FREEPORT**  
113.2 ZFP  
Chan 79

**BIMINI ZBV**  
116.7 ZBV  
Chan 114

**NASSAU**  
112.7 ZQA  
Chan 74

RADAR required. DME required.



NOTE: Chart not to scale.

**ARRIVAL ROUTE DESCRIPTION**

**BORDO TRANSITION (BORDO.DEKAL9):** From over BORDO on ZBV R-160 to ZBV VOR/DME, then on ZBV R-300 to DEKAL. Thence. . .

**FREEPORT TRANSITION (ZFP.DEKAL9):** From over ZFP VOR/DME on ZFP R-215 and ZBV R-036 to ZBV VOR/DME, then on ZBV R-300 to DEKAL. Thence. . .

**NASSAU TRANSITION (ZQA.DEKAL9):** From over ZQA VOR/DME on ZQA R-298 to RAJAY, then on ZBV R-116 to ZBV VOR/DME, then on ZBV R-300 to DEKAL. Thence. . .

**LANDING ALL AIRPORTS:** From DEKAL on FORT LAUDERDALE VOR/DME (FL) R-121 to FL VOR/DME. Expect RADAR vectors to final approach course.

SE-3, 23 JAN 2025 to 20 FEB 2025

# DEKAL NINE ARRIVAL

FORT LAUDERDALE, FLORIDA