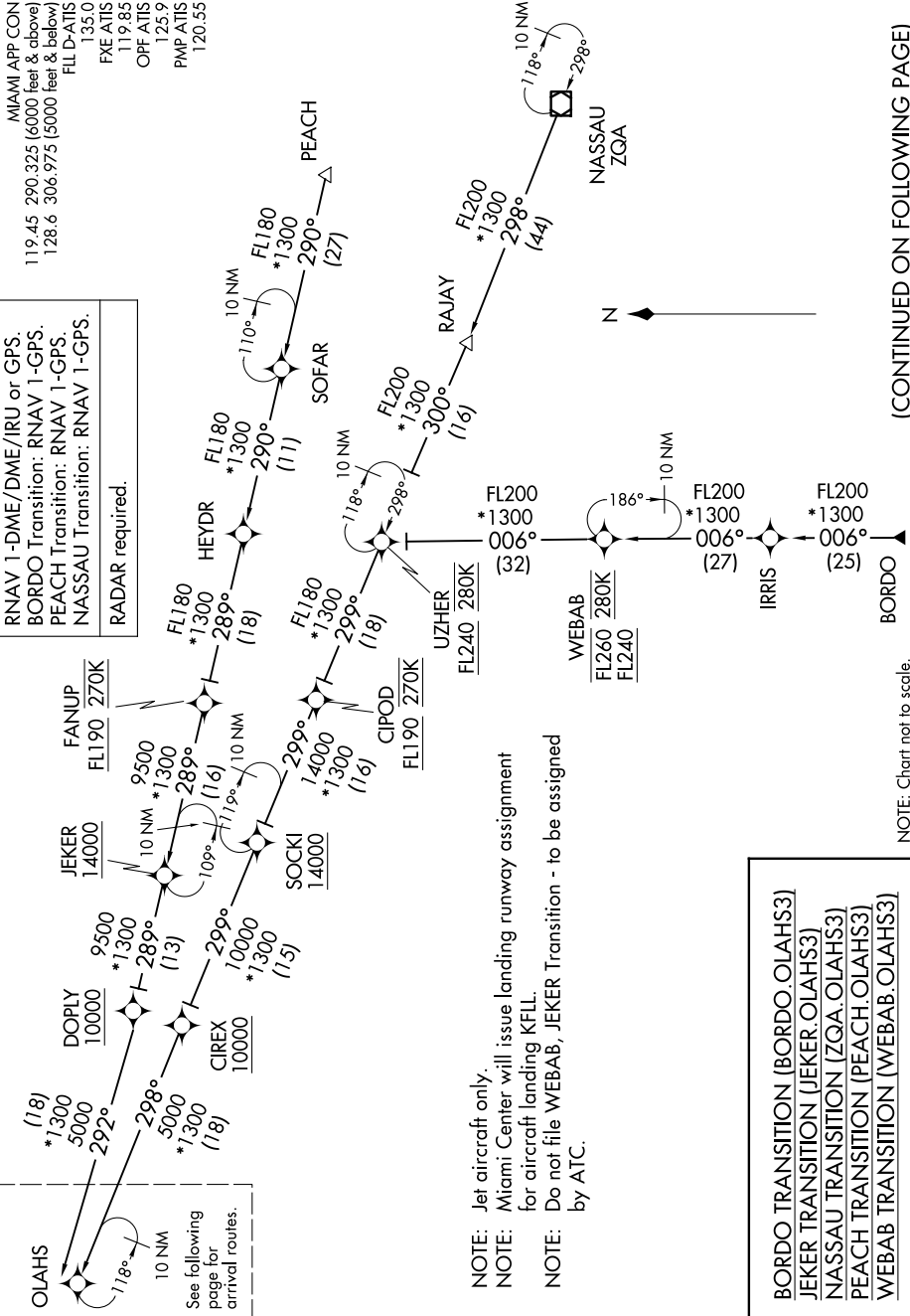


OLAH3 THREE ARRIVAL (RNAV) Transition Routes

FORT LAUDERDALE, FLORIDA

MIAMI APP CON  
119.45 290.325 (6000 feet & above)  
128.6 306.975 (5000 feet & below)  
FL D-ATIS 135.0  
FYE ATIS 119.83  
OPF ATIS 125.9  
PMP ATIS 120.55

RNAV 1-DME/DME/IRU or GPS.  
BORDO Transition: RNAV 1-GPS.  
PEACH Transition: RNAV 1-GPS.  
NASSAU Transition: RNAV 1-GPS.  
RADAR required.



(CONTINUED ON FOLLOWING PAGE)

SE-3, 23 JAN 2025 to 20 FEB 2025

NOTE: Jet aircraft only.  
NOTE: Miami Center will issue landing runway assignment for aircraft landing KFLI.  
NOTE: Do not file WEBAB, JEKER Transition - to be assigned by ATC.

BORDO TRANSITION (BORDO.OLAH33)  
JEKER TRANSITION (JEKER.OLAH33)  
NASSAU TRANSITION (ZQA.OLAH33)  
PEACH TRANSITION (PEACH.OLAH33)  
WEBAB TRANSITION (WEBAB.OLAH33)

NOTE: Chart not to scale.

SE-3, 23 JAN 2025 to 20 FEB 2025

OLAH3 THREE ARRIVAL (RNAV) Transition Routes

FORT LAUDERDALE, FLORIDA