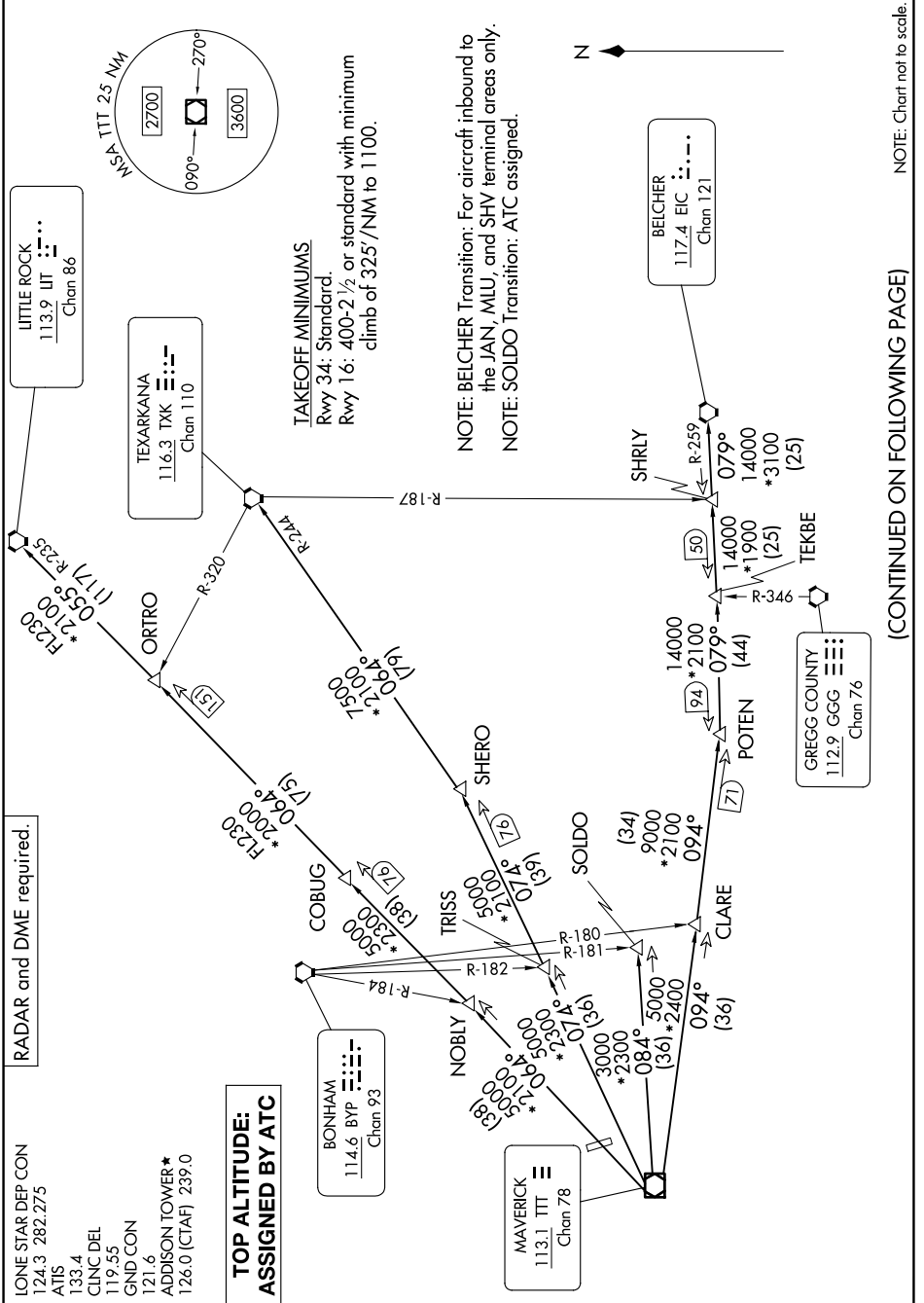


DALLAS THREE DEPARTURE

DALLAS, TEXAS

SC-2, 23 JAN 2025 to 20 FEB 2025



RADAR and DME required.

LONE STAR DEP CON
124.3 282.275
ATIS
133.4
CLNC DEL
119.55
GND CON
121.6
ADDISON TOWER*
126.0 (CTAF) 239.0

**TOP ALTITUDE:
ASSIGNED BY ATC**

TAKEOFF MINIMUMS
Rwy 34: Standard.
Rwy 16: 400-2 1/2 or standard with minimum
climb of 325'/NM to 1100.

NOTE: BELCHER Transition: For aircraft inbound to
the JAN, MIU, and SHV terminal areas only.
NOTE: SOLDO Transition: ATC assigned.

(CONTINUED ON FOLLOWING PAGE)

NOTE: Chart not to scale

DALLAS THREE DEPARTURE

DALLAS, TEXAS

SC-2, 23 JAN 2025 to 20 FEB 2025