

JOE POOL SEVEN DEPARTURE

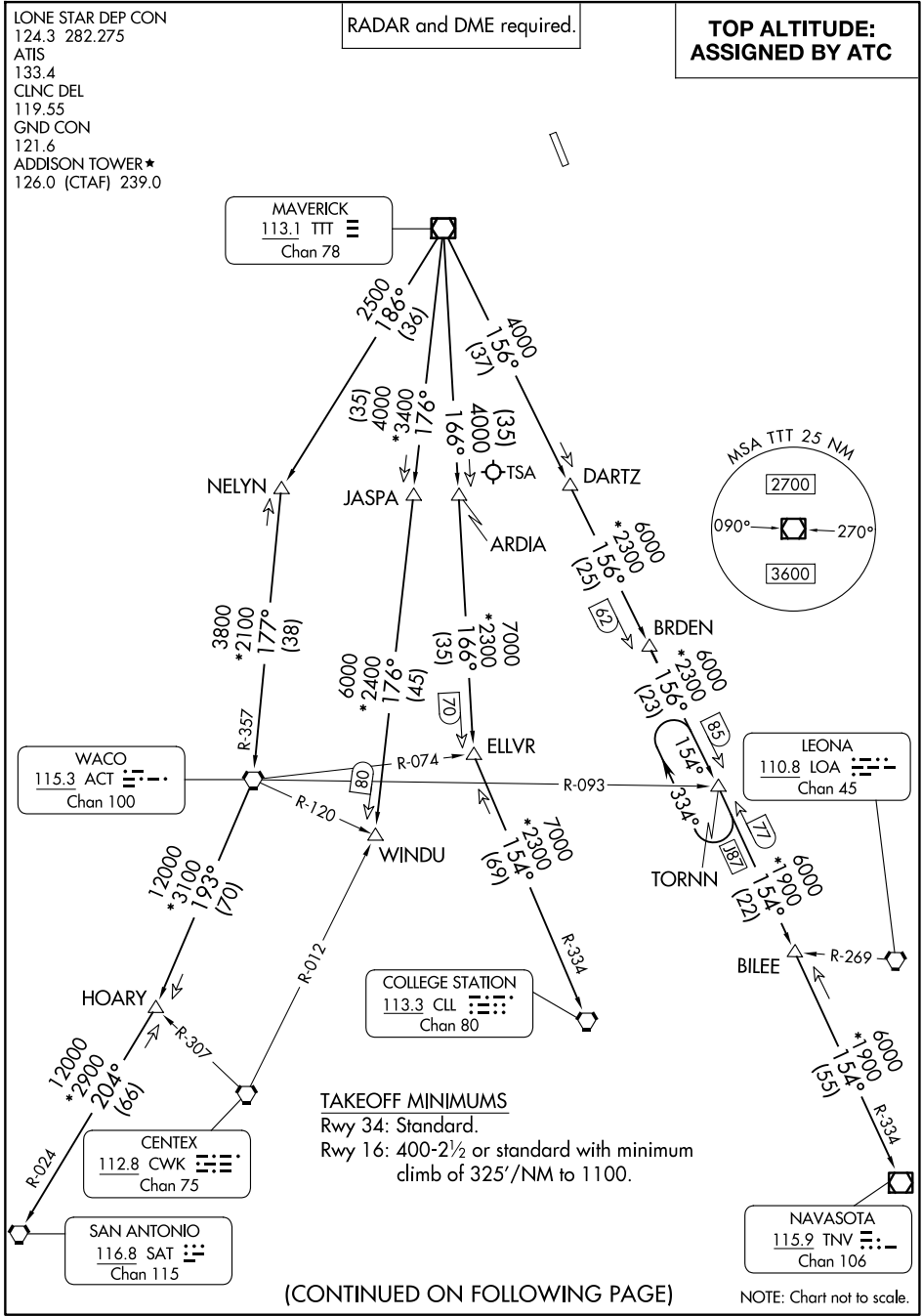
LONE STAR DEP CON
124.3 282.275
ATIS
133.4
CLNC DEL
119.55
GND CON
121.6
ADDISON TOWER*
126.0 (CTAF) 239.0

RADAR and DME required.

**TOP ALTITUDE:
ASSIGNED BY ATC**

SC-2, 23 JAN 2025 to 20 FEB 2025

SC-2, 23 JAN 2025 to 20 FEB 2025



(CONTINUED ON FOLLOWING PAGE)

JOE POOL SEVEN DEPARTURE