

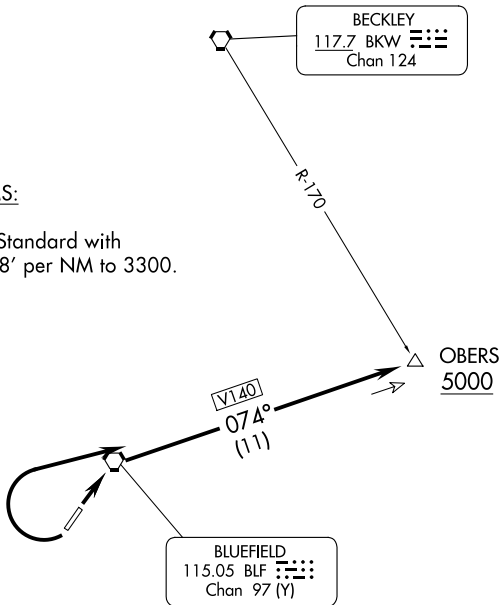
OBERS FOUR DEPARTURE

INDANAPOLIS CENTER
126.575 257.85
CTAF 122.9
ASOS 132.725

**TOP ALTITUDE:
ASSIGNED BY ATC**

TAKE-OFF MINIMUMS:

Rwy 5: Standard.
Rwy 23: 400-2¼ or Standard with
minimum climb of 238' per NM to 3300.



NOTE: Chart not to scale.



DEPARTURE ROUTE DESCRIPTION

TAKE-OFF RUNWAY 5: Climb via BLF R-074 to cross OBERS INT at or above 5000' or altitude assigned by ATC. Thence

TAKE-OFF RUNWAY 23: Climbing right turn via BLF R-074 to cross OBERS INT at or above 5000' or altitude assigned by ATC. Thence

. . . . via ATC assigned route.

NE-4, 23 JAN 2025 to 20 FEB 2025

NE-4, 23 JAN 2025 to 20 FEB 2025