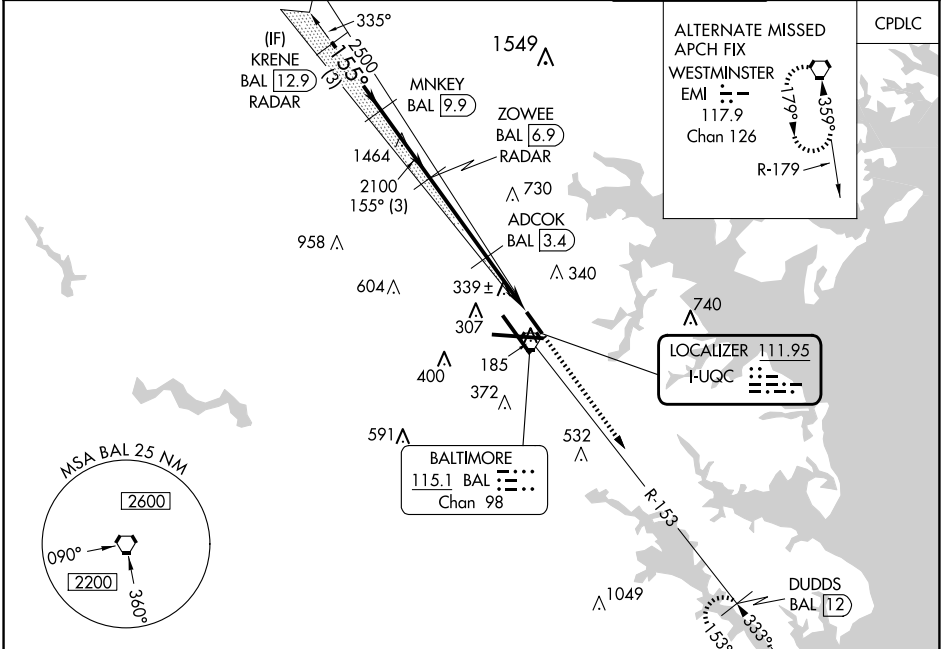


LOC I-UQC <b>111.95</b>	APP CRS <b>155°</b>	Rwy Idg 5000 TDZE 142 Apt Elev 143
----------------------------	------------------------	---------------------------------------------------

BALTIMORE/  
WASHINGTON INTL THURGOOD MARSHALL (BWI)  
**ILS or LOC RWY 15L**

**▼** DME from BAL VORTAC. Simultaneous reception of I-UQC and BAL DME required. MISSED APPROACH: Climb to 2500 on heading 155° and BAL VORTAC R-153 to DUDDS/BAL 12 DME and hold.  
DME required. Simultaneous approach authorized with Rwy 15R. Helicopter visibility reduction below RVR 4000 NA.

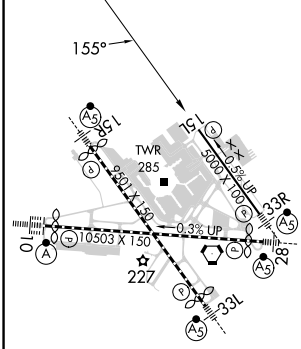
D-ATIS <b>115.1 127.8</b>	POTOMAC APP CON <b>119.0 282.275</b> (020°-100°) <b>124.55 317.425</b> (101°-130°)	<b>119.7 290.475</b> (131°-180°) <b>128.7 307.9</b> (181°-019°)	BALTIMORE TOWER <b>119.4 257.8</b>	GND CON <b>121.9</b>	CLNC DEL <b>118.05</b>
------------------------------	------------------------------------------------------------------------------------------	--------------------------------------------------------------------	---------------------------------------	-------------------------	---------------------------



NE-3, 23 JAN 2025 to 20 FEB 2025

NE-3, 23 JAN 2025 to 20 FEB 2025

ELEV 143	<b>D</b>	TDZE 142
----------	----------	----------

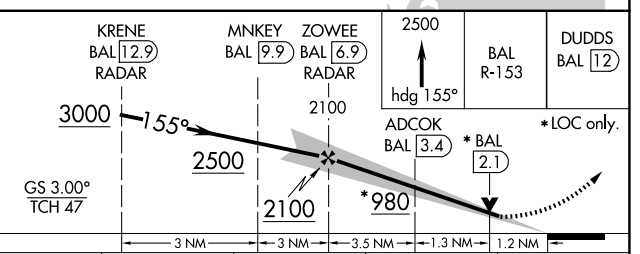


TDZ/CL Rwy 10 and 33L  
REIL Rwy 15L and 33R  
HIRL all Rwy

FAF to MAP 6 NM

Knots	60	90	120	150	180
Min:Sec	6:00	4:00	3:00	2:24	2:00

**RADAR REQUIRED**



CATEGORY	A	B	C	D
S-ILS 15L	544-1 $\frac{3}{8}$	402 (500-1 $\frac{1}{2}$ )		NA
S-LOC 15L	560/55	418 (500-1)		NA
<b>C</b> CIRCLING	640-1 497 (500-1)	660-1 517 (600-1)		NA