

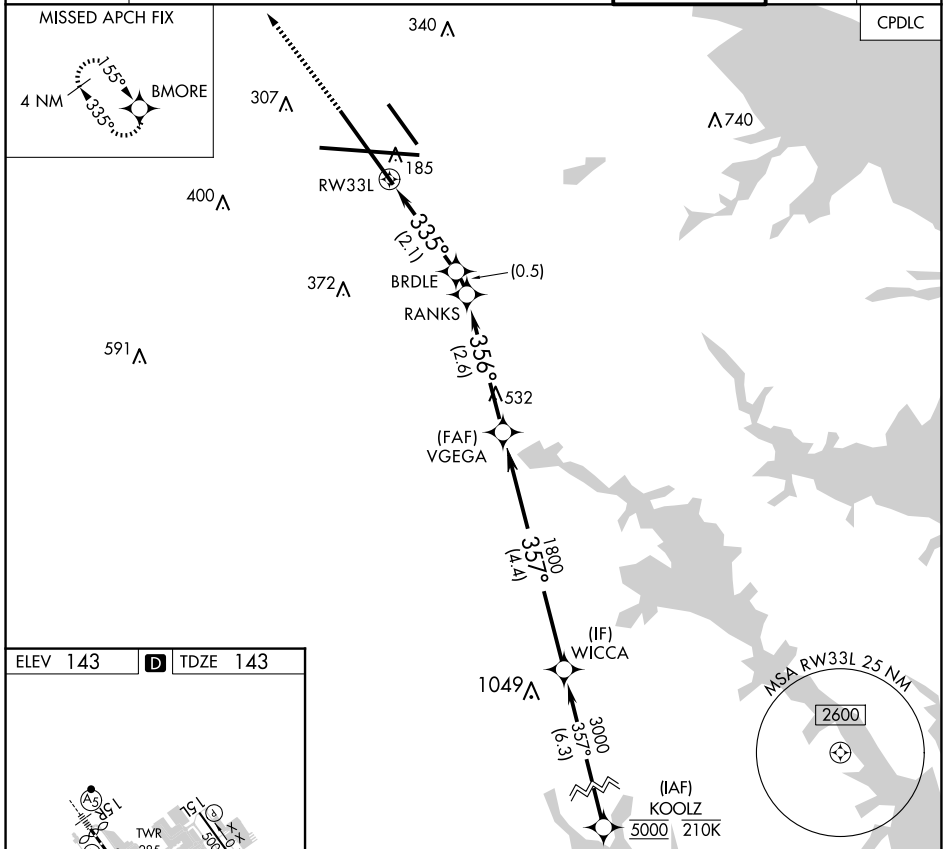
RNAV (RNP) X RWY 33L

BALTIMORE/WASHINGTON INTL THURGOOD MARSHALL (BWI)

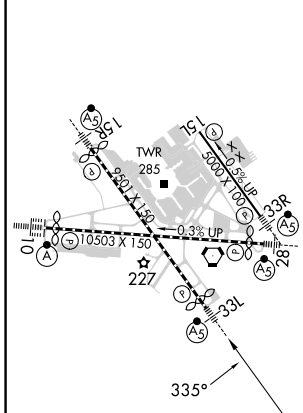
APP CRS 335°	Rwy Idg TDZE Apt Elev	8301 143 143
------------------------	-----------------------------	---

RNP AR APCH - GPS, RF.	MALSR	MISSED APPROACH: Climb to 3000 direct BMORE and hold.
▼ For uncompensated Baro-VNAV systems, procedure NA below -11°C or above 54°C.		

D-ATIS 115.1 127.8	POTOMAC APP CON (020°-100°) 119.7 290.475 (131°-180°) (101°-130°) 128.7 307.9 (181°-019°)	BALTIMORE TOWER 119.4 257.8	GND CON 121.9	CLNC DEL 118.05
------------------------------	---	---------------------------------------	-------------------------	---------------------------



ELEV 143	D	TDZE 143
----------	----------	----------



TDZ/CL Rwy 10 and 33L
REIL Rwy 15L and 33R
HIRL all Rwy

3000	BMORE	VGSI and RNAV glidepath not coincident (VGSI Angle 3.00/TCH 72).	WICCA
RW33L	BRDLE	RANKS	VEGEGA
	839	986	1800
			357°
			3000
			GP 3.00°
			TCH 55
	2.1 NM	0.5 NM	2.6 NM
			4.4 NM

CATEGORY	A	B	C	D
RNP 0.30 DA		479/26	336 (400-1/2)	

AUTHORIZATION REQUIRED

RNAV (RNP) X RWY 33L

NE-3, 23 JAN 2025 to 20 FEB 2025

NE-3, 23 JAN 2025 to 20 FEB 2025