

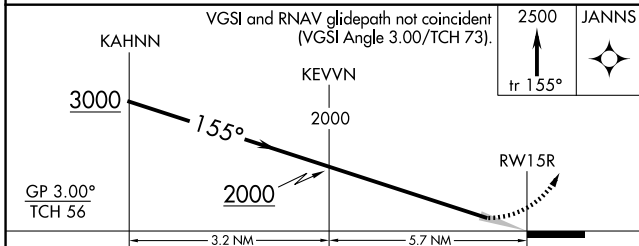
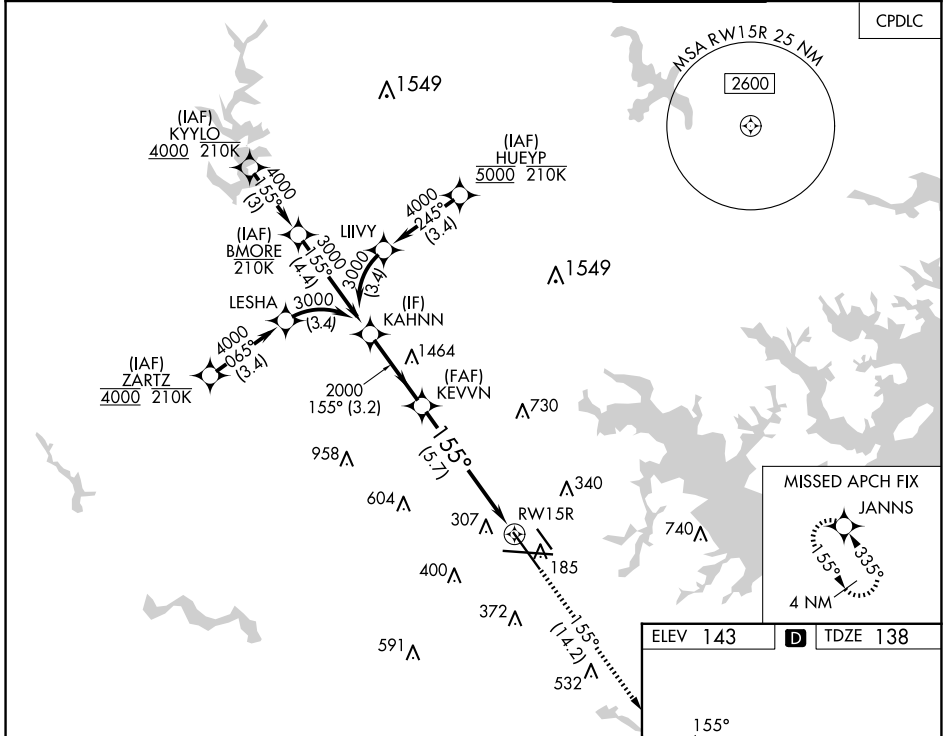
RNAV (RNP) Z RWY 15R

BALTIMORE/WASHINGTON INTL THURGOOD MARSHALL (BWI)

APP CRS	Rwy Idg	8301
155°	TDZE	138
	Apt Elev	143

RNP AR APCH - GPS.	MALSR	MISSED APPROACH: Climb to 2500 on track 155° to JANN5 and hold.
▼ For uncompensated Baro-VNAV systems, procedure NA below -11°C or above 54°C. Simultaneous approach authorized with Rwy 15L. For inop ALS, increase RNP 0.11 DA all Cats visibility to RVR 5500.		

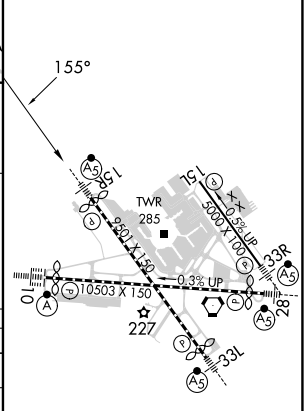
D-ATIS	POTOMAC APP CON	BALTIMORE TOWER	GND CON	CLNC DEL
115.1 127.8	119.0 282.275 (020°-100°) 119.7 290.475 (101°-130°) 128.7 307.9 (131°-180°) (181°-019°)	119.4 257.8	121.9	118.05



CATEGORY	A	B	C	D
RNP 0.11 DA		513/35	375 (400-%)	
RNP 0.30 DA		587/45	449 (500-%)	

AUTHORIZATION REQUIRED

ELEV 143	D	TDZE 138
----------	----------	----------



TDZ/CL Rwy's 10 and 33L
REIL Rwy's 15L and 33R
HIRL all Rwy's

NE-3, 23 JAN 2025 to 20 FEB 2025

NE-3, 23 JAN 2025 to 20 FEB 2025

RNAV (RNP) Z RWY 15R