

WAAS CH <b>48926</b> <b>W05A</b>	APP CRS <b>049°</b>	Rwy Idg TDZE Apt Elev	<b>6573</b> <b>1654</b> <b>1663</b>
--	------------------------	-----------------------------	---

# RNAV (GPS) RWY 5

ADIRONDACK RGNL (SLK)

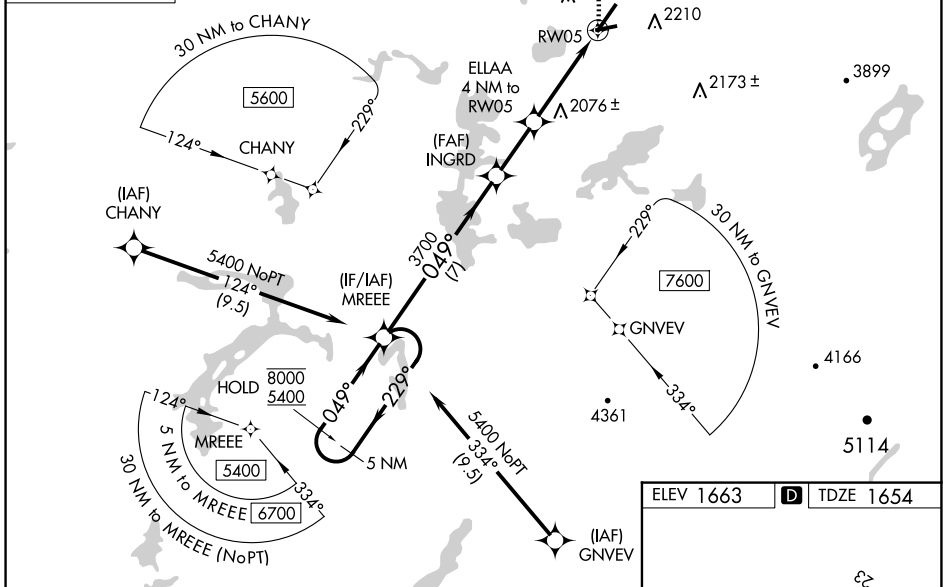
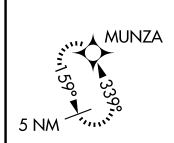
RNP APCH-GPS.

**⚠** Circling Rwy 5, 9, 27 NA at night. Rwy 5 helicopter visibility reduction below 1 SM NA. Rwy 5 straight-in minimums NA at night.  
**🌡** -29°C

**MISSED APPROACH:** Climbing left turn to 6000 direct MUNZA and hold, continue climb-in-hold to 6000.

ASOS <b>124.175</b>	BOSTON CENTER <b>120.35 342.25</b>	UNICOM <b>123.0 (CTAF) 0</b>
------------------------	---------------------------------------	---------------------------------

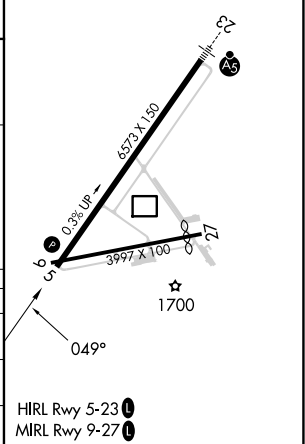
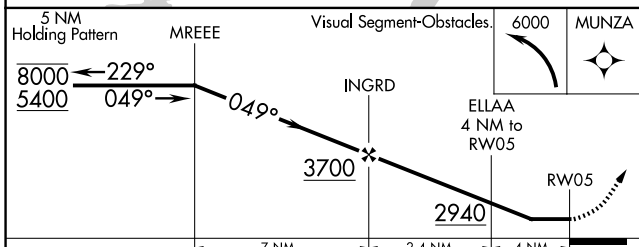
MISSED APCH FIX



NE-2, 23 JAN 2025 to 20 FEB 2025

NE-2, 23 JAN 2025 to 20 FEB 2025

ELEV 1663	<b>D</b> TDZE 1654
-----------	--------------------



CATEGORY	A	B	C	D
LP MDA	2420-1 766 (800-1)	2420-1 1/4 766 (800-1 1/4)	2420-2 1/2	766 (800-2 1/2)
LNAV MDA	2540-1 1/4	886 (900-1 1/4)	2540-2 1/2	886 (900-2 1/2)
<b>C</b> CIRCLING	2540-1 1/4 877 (900-1 1/4)	2660-1 1/2 997 (1000-1 1/2)	2660-3 997 (1000-3)	2680-3 1017 (1100-3)

HIRL Rwy 5-23 **0**  
MIRL Rwy 9-27 **0**