

| | | | |
|---|------------------------|-----------------------------|---|
| LOC/DME I-TUP 108.5 Chan 22 | APP CRS 002° | Rwy Idg TDZE Apt Elev | 7150 347 347 |
|---|------------------------|-----------------------------|---|

ILS Y or LOC Y RWY 36

TUPELO RGNL (TUP)

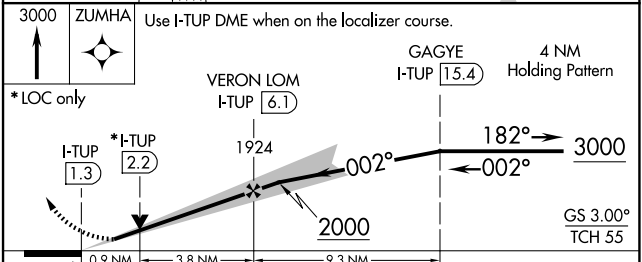
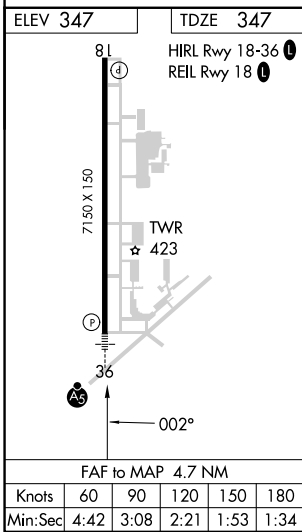
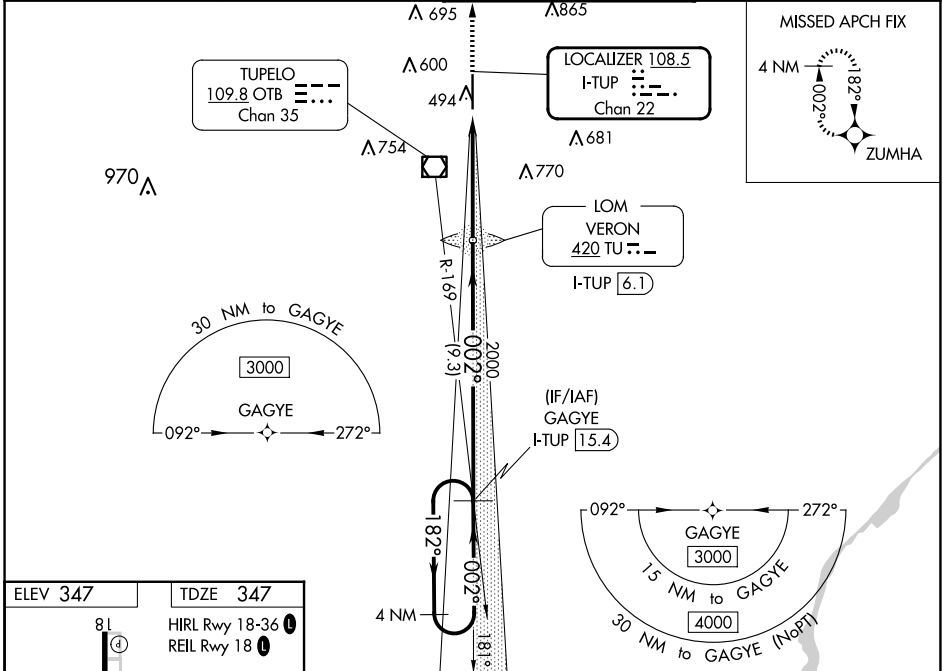
RNAV 1-GPS required.
DME or ADF required for LOC only.

⚠ When local altimeter setting not received, use Columbus AFB altimeter setting and increase all DA 112 feet and all MDA 120 feet; increase S-LOC 36 Cat C and D visibility $\frac{3}{8}$ SM and Circling Cat C and D visibility $\frac{1}{2}$ SM. For inop ALS when using Columbus AFB altimeter setting, increase S-ILS 36 all Cats visibility $\frac{1}{2}$ SM. VDP NA when using Columbus AFB altimeter setting. Autopilot coupled approach NA below 650 feet.



MISSED APPROACH:
Climb to 3000 direct ZUMHA and hold.

| | | | |
|------------------------|---------------------------------------|---|-----------------------------------|
| ASOS 133.525 | MEMPHIS CENTER 128.5 279.55 | TUPELO TOWER ★ 118.775 (CTAF) 0 254.275 | GND CON 121.825 254.275 |
|------------------------|---------------------------------------|---|-----------------------------------|



| | | | | |
|-------------------|--------------------|---------------------------|---|--|
| CATEGORY | A | B | C | D |
| S-ILS 36 | 547- $\frac{1}{2}$ | | 200 (200- $\frac{1}{2}$) | |
| S-LOC 36 | 700- $\frac{1}{2}$ | 353 (400- $\frac{1}{2}$) | 700- $\frac{5}{8}$ | 353 (400- $\frac{5}{8}$) |
| C CIRCLING | 820-1 | 473 (500-1) | 900-1 $\frac{1}{2}$ 553 (600-1 $\frac{1}{2}$) | 1140-2 $\frac{1}{2}$ 793 (800-2 $\frac{1}{2}$) |

SC-4, 23 JAN 2025 to 20 FEB 2025

SC-4, 23 JAN 2025 to 20 FEB 2025