


VORTAC ELW <b>108.6</b> Chan 23	APP CRS <b>039°</b>	Rwy Idg <b>6002</b> TDZE <b>759</b> Apt Elev <b>782</b>
---------------------------------------	------------------------	---

# VOR RWY 5

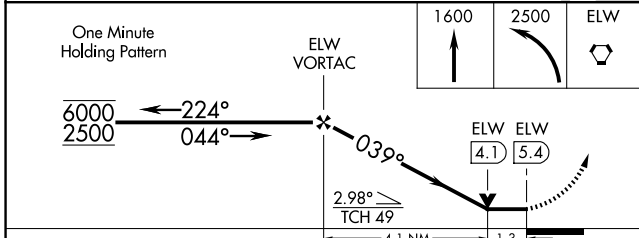
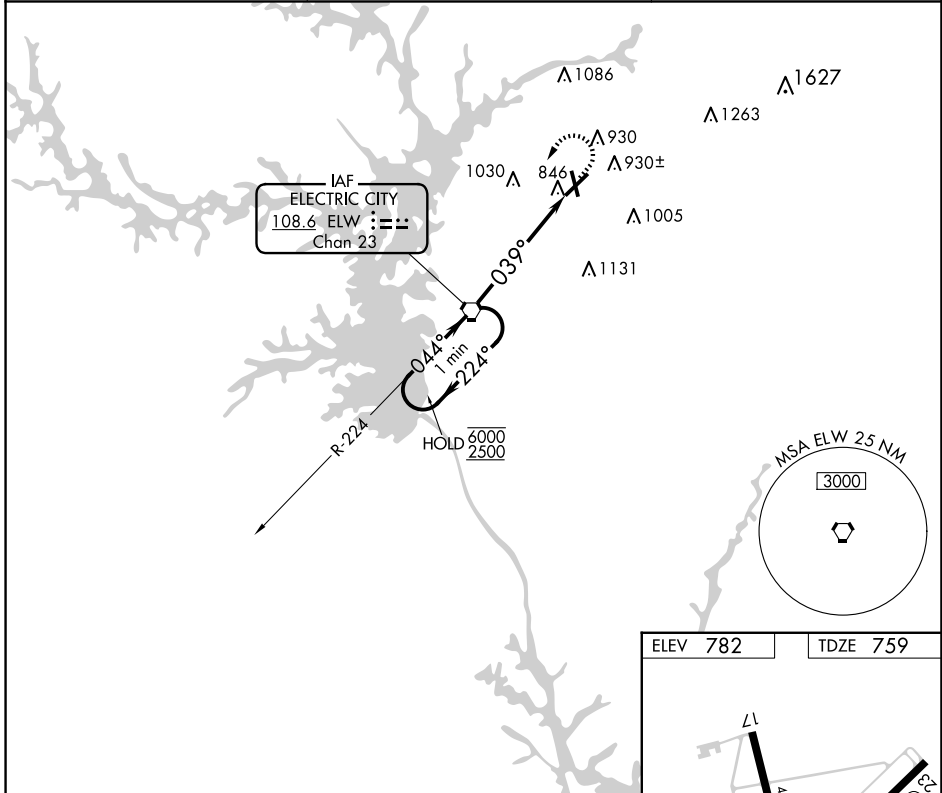
ANDERSON RGNL (A.ND)

⚠ Rwy 17, 35 helicopter visibility reduction below 1 SM NA. When local altimeter setting not received, use CEU altimeter setting and increase all MDAs 60 feet and S-5 visibility Cat C/D 1/8 SM, and Circling visibility Cat C/D 1/4 SM. VDP NA when using CEU altimeter setting. Circling Rwy 17, 35 NA at night.

MALSR 

MISSED APPROACH: Climb to 1600 then climbing left turn to 2500 direct ELW VORTAC and hold.

ASOS <b>120.675</b>	GREER APP CON ★ <b>118.8 270.275</b>	CTAF <b>123.6 0</b>
------------------------	---	------------------------



ELEV 782	TDZE 759
----------	----------

HIRL Rwy 5-23 **0**

FAF to MAP 5.4 NM

Knots	60	90	120	150	180
Min:Seq	5:24	3:36	2:42	2:10	1:48

CATEGORY	A	B	C	D
S-5	1200-1/2	441 (500-1/2)	1200-7/8	441 (500-7/8)
<b>C</b> CIRCLING	1260-1 478 (500-1)	1320-1 538 (600-1)	1440-1 3/4 658 (700-1 3/4)	1500-2 1/4 718 (800-2 1/4)

SE-2, 23 JAN 2025 to 20 FEB 2025

SE-2, 23 JAN 2025 to 20 FEB 2025