

WAAS CH 58201 W17A	APP CRS 176°	Rwy Idg TDZE Apt Elev	6201 694 717
--	------------------------	-----------------------------	---

RNAV (GPS) RWY 17

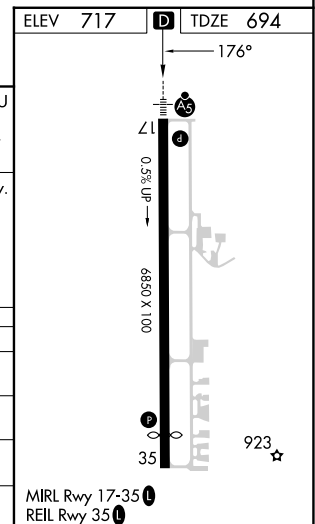
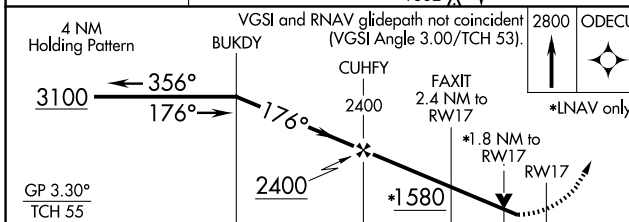
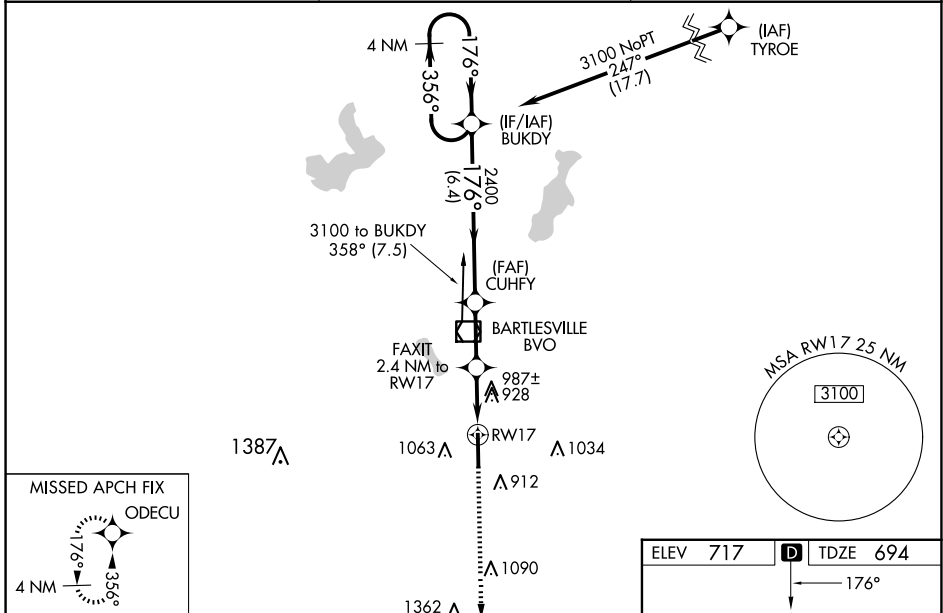
BARTLESVILLE MUNI (BVO)

⚠ For uncompensated Baro-VNAV systems, LNAV/VNAV NA below -18°C (0°F) or above 54°C (130°F). DME/DME RNP-0.3 NA. When local altimeter setting not received, use Tulsa Intl altimeter setting and increase all DA 85 feet and all MDA 100 feet, increase LPV all Cats, LNAV/VNAV all Cats, LNAV and Circling Cat C visibility ¼ mile. Inop table does not apply to LPV all Cats. For inop MALS, increase LNAV Cat A/B visibility to 1 mile. For inop MALS when use Tulsa Intl altimeter setting, increase LNAV/VNAV all Cats visibility to 2½ mile, and LNAV Cat A/B visibility to 1 mile. Circling NA east of Rwy 17-35. Baro-VNAV and VDP NA when using Tulsa Intl altimeter setting. Helicopter visibility reduction below ¼ SM NA.

MALS
AS

MISSED APPROACH:
Climb to 2800 direct ODECU and hold.

ASOS 132.675	KANSAS CITY CENTER 128.6 282.325	CTAF 122.825
------------------------	--	------------------------



CATEGORY	A	B	C	D
LPV DA	906-¾	212 (200-¾)	944-¾ 250 (300-¾)	NA
LNAV/VNAV DA	1317-1½		623 (700-1½)	NA
LNAV MDA	1240-¾	546 (600-¾)	1240-1⅛ 546 (600-1⅛)	NA
C CIRCLING	1380-1	663 (700-1)	1400-2 683 (700-2)	NA

SC-1, 23 JAN 2025 to 20 FEB 2025

SC-1, 23 JAN 2025 to 20 FEB 2025