

VICKSBURG, MISSISSIPPI

AL-879 (FAA)

24025

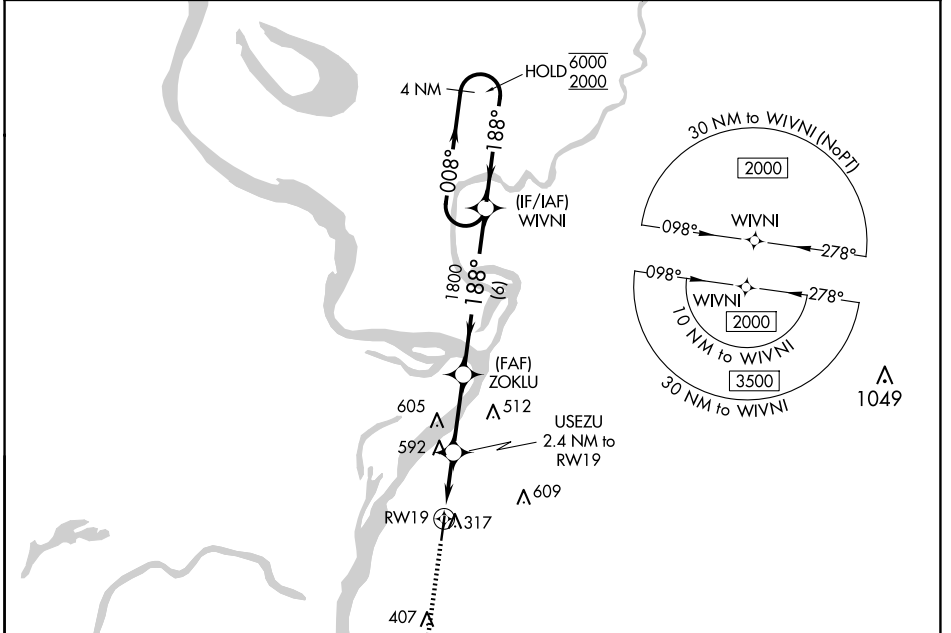
WAAS CH 60932 W19A	APP CRS 188°	Rwy Idg TDZE 106 Apt Elev 107	4529
--	------------------------	---	-------------

RNAV (GPS) RWY 19

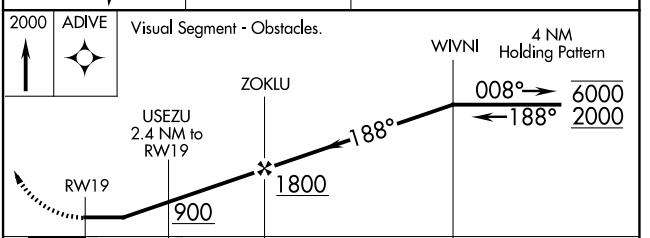
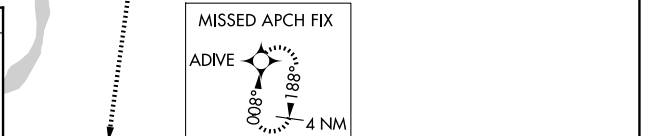
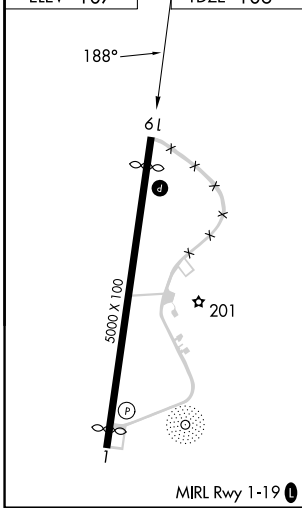
VICKSBURG MUNI (VKS)

RNP APCH.	<p>⚠ Circling NA for Cat D west of Rwy 1-19. Procedure NA at night. Rwy 19 helicopter visibility reduction below 1 SM NA.</p>	<p>MISSED APPROACH: Climb to 2000 direct ADIVE and hold.</p>
-----------	--	--

AWOS-3 118.85	MEMPHIS CENTER 132.5 259.1	UNICOM 122.8 (CTAF) 📶
-------------------------	--------------------------------------	--



ELEV 107	TDZE 106
----------	----------



CATEGORY	A	B	C	D
LP MDA	660-1	554 (600-1)	660-1 ³ / ₈	554 (600-1 ³ / ₈)
LNAV MDA	860-1 754 (800-1)	860-1 ¹ / ₄ 754 (800-1 ¹ / ₄)	860-2	754 (800-2)
CIRCLING	860-1 753 (800-1)	860-1 ¹ / ₄ 753 (800-1 ¹ / ₄)	860-2 ¹ / ₄ 753 (800-2 ¹ / ₄)	860-2 ¹ / ₂ 753 (800-2 ¹ / ₂)

VICKSBURG, MISSISSIPPI
Orig-B 13SEP18

32°14'N-90°56'W

RNAV (GPS) RWY 19

SC-4, 23 JAN 2025 to 20 FEB 2025

SC-4, 23 JAN 2025 to 20 FEB 2025