

WAAS CH 7703 W09A	APP CRS 088°	Rwy ldg TDZE Apt Elev	6347 285 291
---------------------------------------	------------------------	-----------------------------	---

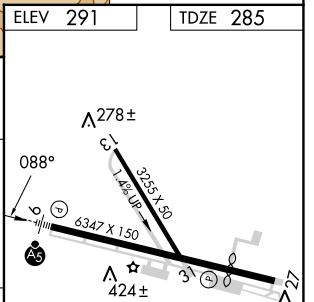
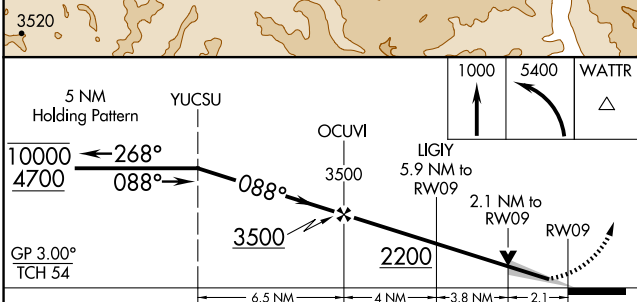
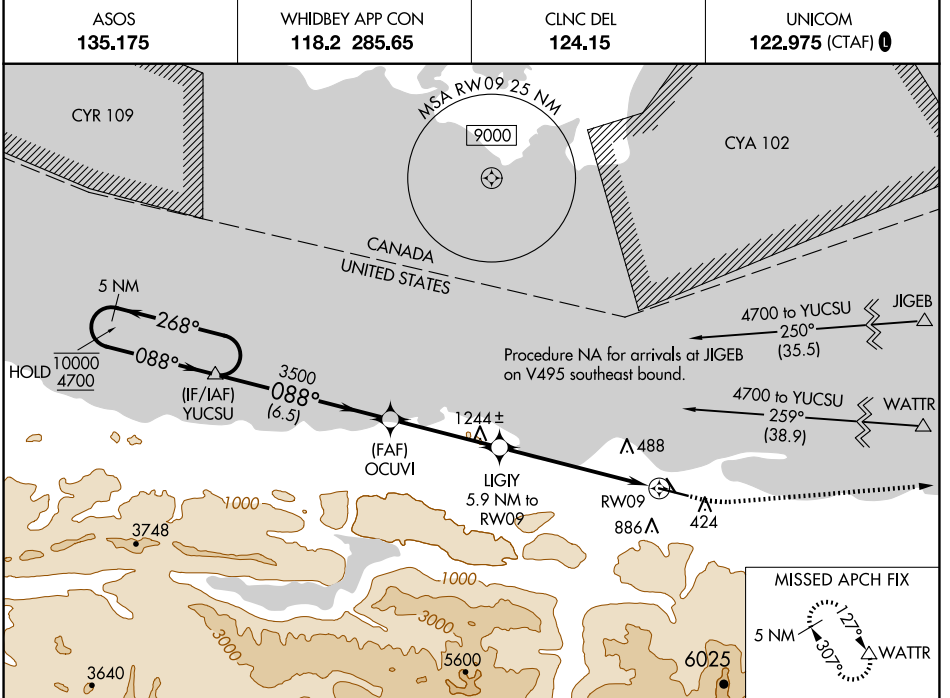
RNAV (GPS) RWY 9

WILLIAM R FAIRCHILD INTL (CLM)

RNP APCH - GPS.

MAJLR
MISSED APPROACH: Climb to 1000 then climbing left turn to 5400 direct WATTR and hold, continue climb-in-hold to 5400.

ASOS 135.175 **WHIDBEY APP CON** 118.2 285.65 **CLNC DEL** 124.15 **UNICOM** 122.975 (CTAF) **1**



CATEGORY	A	B	C	D
LPV DA	505-1/2		220 (300-1/2)	
LNAV/VNAV DA	757-1 1/8		472 (500-1 1/8)	
LNAV MDA	960-1/2	675 (700-1/2)	960-1 1/2	675 (700-1 1/2)
CIRCLING	960-1	669 (700-1)	960-1 7/8	1000-2 1/4
			669 (700-1 7/8)	709 (800-2 1/4)

MIRL Rwy 9-27 **1**
REIL Rwy 27

NW-1, 23 JAN 2025 to 20 FEB 2025

NW-1, 23 JAN 2025 to 20 FEB 2025