

RIDDG ONE DEPARTURE (RNAV)

GLACIER PARK INTL (GPI)
KALISPELL, MONTANA
RNAV 1 - GPS.

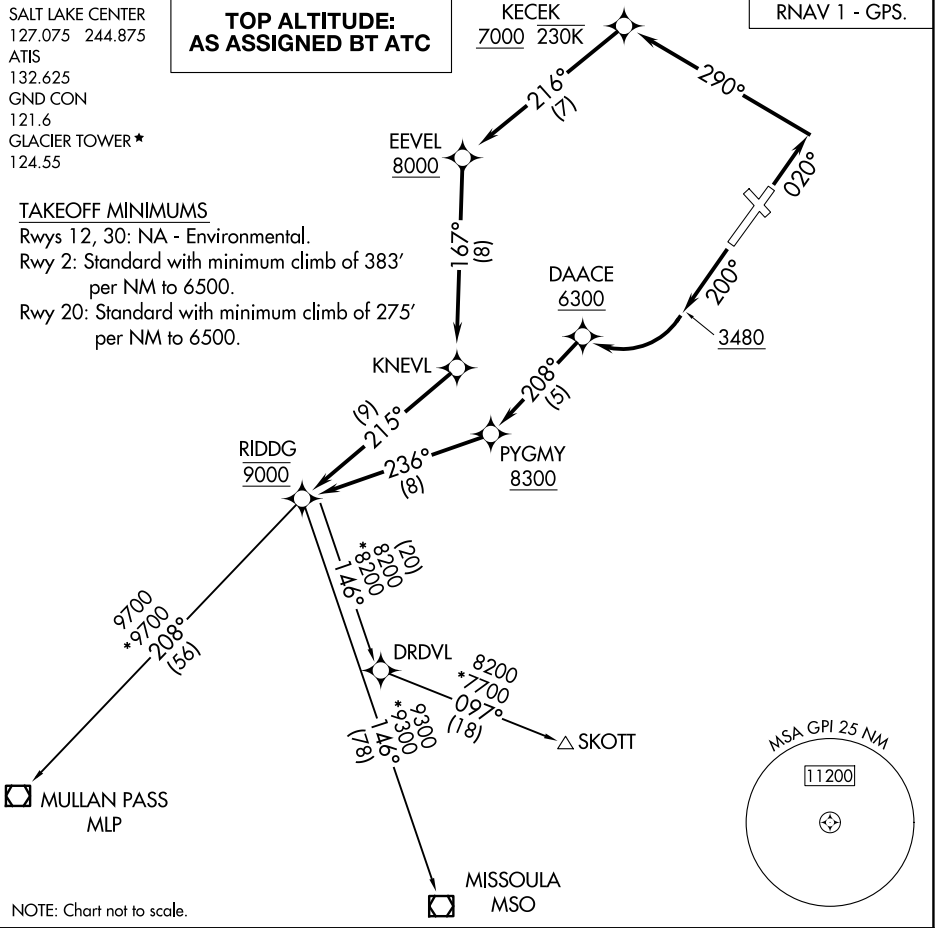
SALT LAKE CENTER
127.075 244.875
ATIS
132.625
GND CON
121.6
GLACIER TOWER ★
124.55

**TOP ALTITUDE:
AS ASSIGNED BT ATC**

AL-887 (FAA)
KECEK
7000 230K

TAKEOFF MINIMUMS

- Rwys 12, 30: NA - Environmental.
- Rwy 2: Standard with minimum climb of 383' per NM to 6500.
- Rwy 20: Standard with minimum climb of 275' per NM to 6500.



NOTE: Chart not to scale.



DEPARTURE ROUTE DESCRIPTION

TAKEOFF RUNWAY 2: Climb on heading 020° to intercept course 290° to cross KECEK at or above 7000, then on track 216° to cross EEVEL at or above 8000, then on track 167° to KNEVL, then on track 215° to cross RIDDG at 9000, thence. . . .

TAKEOFF RUNWAY 20: Climb on heading 200° to 3480, then right turn direct to cross DAACE at or above 6300, then on track 208° to cross PYGMY at or above 8300, then on track 236° to cross RIDDG at 9000, thence. . . .

. . . on filed transition. Maintain ATC assigned altitude. Expect clearance to filed altitude five minutes after departure.

- MISSOULA TRANSITION (RIDDG1.MSO)
- MULLAN PASS TRANSITION (RIDDG1.MLP)
- SKOTT TRANSITION (RIDDG1.SKOTT)

RIDDG ONE DEPARTURE (RNAV)

KALISPELL, MONTANA
GLACIER PARK INTL (GPI)