

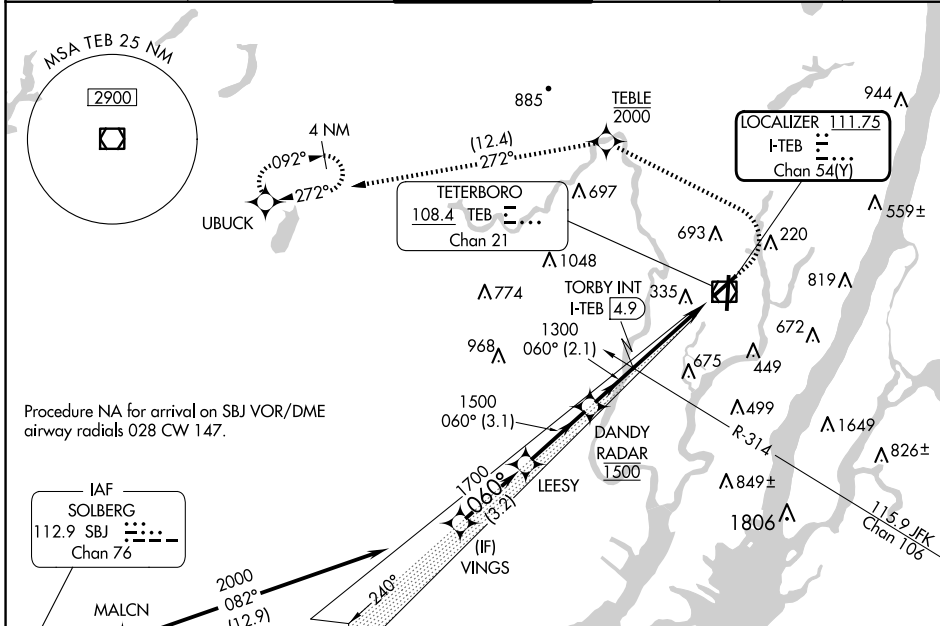
LOC/DME I-TEB	APP CRS	Rwy Idg	<b>6013</b>
<b>111.75</b>	<b>060°</b>	TDZE	<b>6</b>
Chan <b>54(Y)</b>		Apt Elev	<b>8</b>

# ILS Z or LOC Z RWY 6

TETERBORO (TEB)

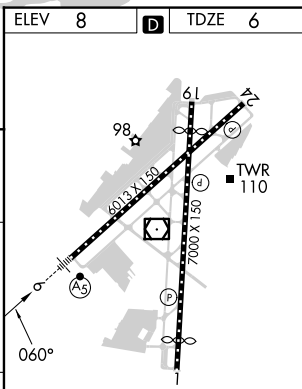
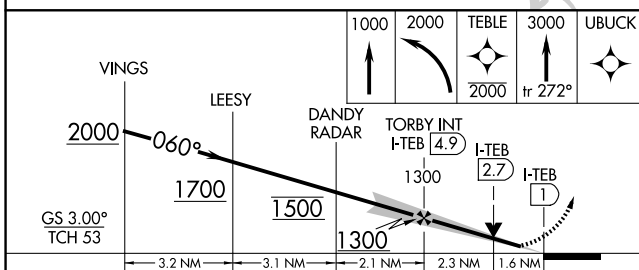
RNP APCH - GPS.		MALSR AS	MISSED APPROACH: Climb to 1000, then climbing left turn to 2000 direct TEBLE, cross TEBLE at or below 2000, then climb to 3000 on track 272° to UBUCK and hold.
RADAR required.			
<p>▼ Circling NA for Cats B, C and D northwest of Rwy 6 and 19.</p>			

D-ATIS	NEWARK APP CON	TETERBORO TOWER	GND CON	CLNC DEL	CPDLC
<b>114.2 132.85</b>	<b>127.6 379.9</b>	<b>119.5</b>	<b>121.9</b>	<b>128.05</b>	



Procedure NA for arrival on SBJ VOR/DME airway radials 028 CW 147.

ELEV	<b>8</b>	TDZE	<b>6</b>
------	----------	------	----------



CATEGORY	A	B	C	D
S-ILS 6		206/18	200 (200-½)	
S-LOC 6	580/24	574 (600-½)	580-1¼	574 (600-1¼)
CIRCLING	760-1	752 (800-1)	820-2½ 812 (900-2½)	1040-3 1032 (1100-3)

FAF to MAP 3.9 NM					
Knots	60	90	120	150	180
Min:Sec	3:54	2:36	1:57	1:34	1:18

NE-2, 23 JAN 2025 to 20 FEB 2025

NE-2, 23 JAN 2025 to 20 FEB 2025