


WAAS CH 86206 W36A	APP CRS 356°	Rwy Idg TDZE Apt Elev	8002 200 203
--	------------------------	-----------------------------	---

RNAV (GPS) RWY 36

VALDOSTA RGNL (VLD)

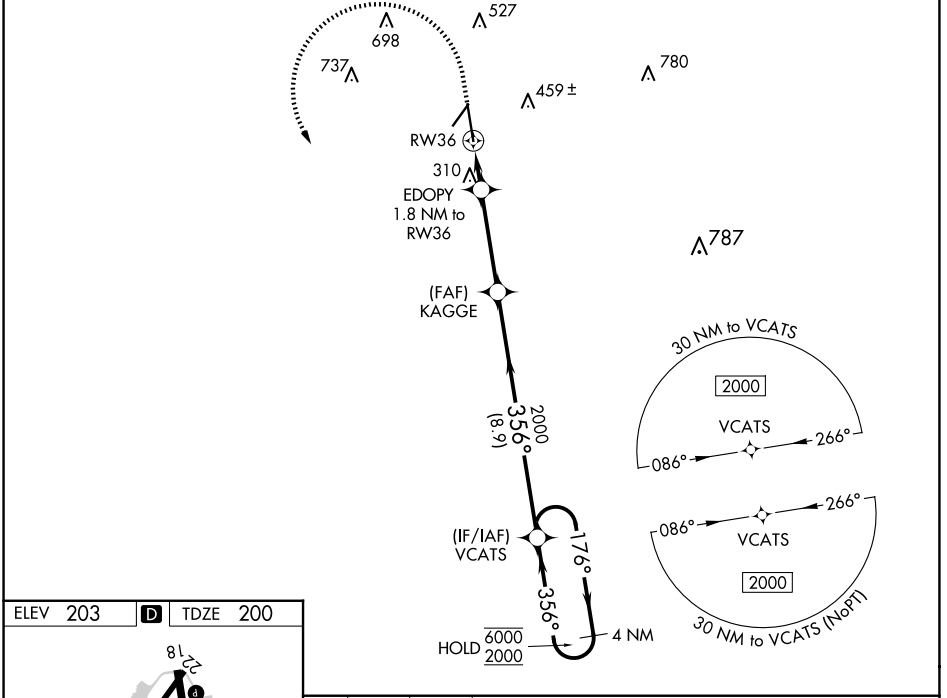
RNP APCH - GPS.

⚠ For uncompensated Baro-VNAV systems, LNAV/VNAV NA below -4°C or above 54°C. Rwy 36 helicopter visibility reduction below ¾ SM NA. For inop ALS, increase LPV and LNAV/VNAV all Cats visibility to ¾ SM and LNAV all Cats visibility to 1 SM.

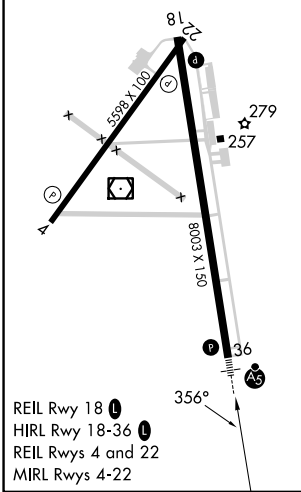
MALSR 

MISSED APPROACH: Climb to 700 then climbing left turn to 2000 direct VCATS and hold.

ASOS 126.225	VALDOSTA APP CON * 126.6 285.6	VALDOSTA TOWER * 128.35 (CTAF) 0	GND CON 121.7	UNICOM 122.95
------------------------	--	--	-------------------------	-------------------------



ELEV 203	D	TDZE 200
----------	----------	----------



VALDOSTA, GEORGIA
Amdt 2 25JAN24

30°47'N-83°17'W

RNAV (GPS) RWY 36

VALDOSTA RGNL (VLD)

700	2000	VCATS				
RWY 36		EDOPY 1.8 NM to RWY 36	KAGGE 2000	VCATS	4 NM Holding Pattern	
1 NM		0.8 NM	3.7 NM	8.9 NM		
820	2000	356°	176°	6000	2000	GP 3.00° TCH 53
CATEGORY	A	B	C	D		
LPV DA	489-¾ 289 (300-¾)					
LNAV/VNAV DA	482-¾ 282 (300-¾)					
LNAV MDA	560-¾ 360 (400-¾)					
CIRCLING	640-1 437 (500-1)	700-1 497 (500-1)	900-2 697 (700-2)	1020-2¾ 817 (900-2¾)		

SE-4, 23 JAN 2025 to 20 FEB 2025

SE-4, 23 JAN 2025 to 20 FEB 2025