

HI-TACAN Z RWY 24R

TACAN NKX Chan 33	APCH CRS 247°	Rwy Idg 24R	12,000	24L	8001
		TDZE	475	24L	477
		Arpt Elev	477		

AL-903 [USN]
MIRAMAR MCAS (JOE FOSS FLD) (KNKX)

*When ALS inop, increase CAT CDE vis to 1½ miles.
 ** CAT E circling not authorized S of Rwy 6R-24L.

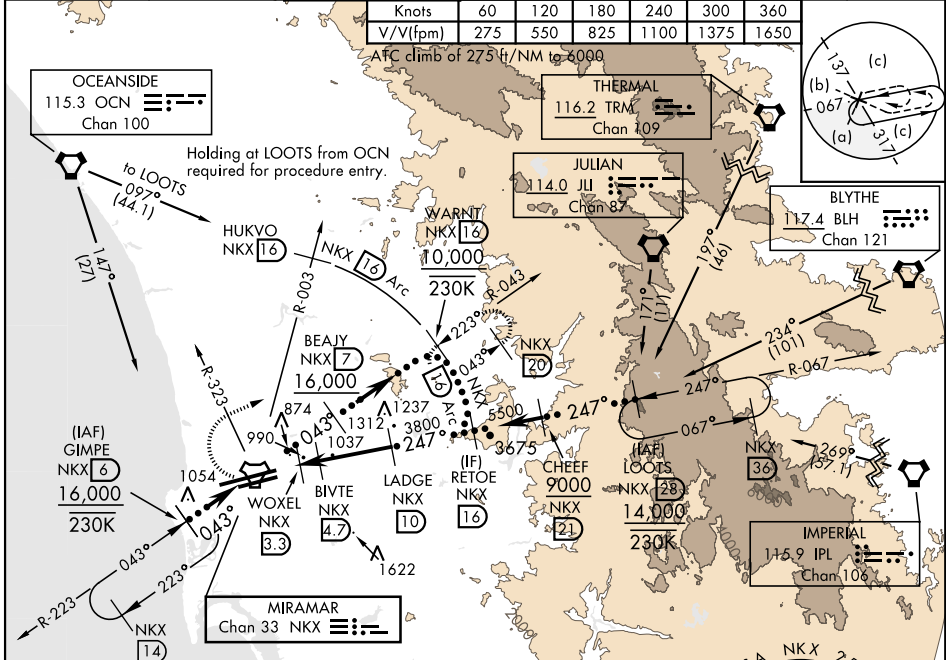
ALSF-1

MISSED APPROACH: Climb to 1500, then climbing right turn to 7000 via NKX TACAN R-003 to HUKVO. Arc NE of NKX via 16 mile arc to WARNT and hold. Cross R-323 at 3000 mandatory, cross HUKVO at 6000 mandatory.

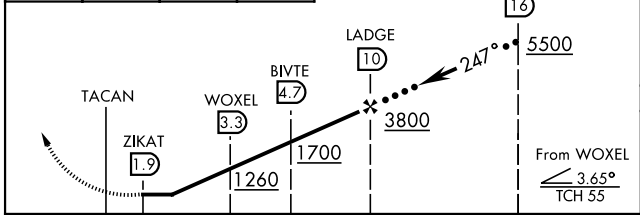
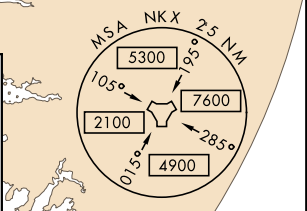
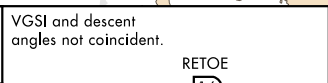
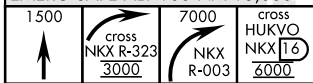
ATIS ★	SOCAL APP CON	FOSS TOWER ★	GND CON	CLNC DEL	ASR/ PAR	LA CENTER
133.475 352.0	132.2 269.1	135.2 298.925 0	128.625 307.325	125.975 254.325		291.7

Knots	60	120	180	240	300	360
V/V(fpm)	275	550	825	1100	1375	1650

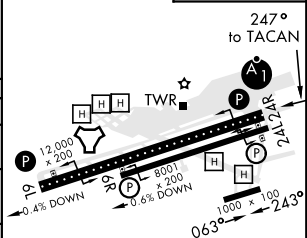
AFC climb of 275 ft/NM to 6000



EMERG SAFE ALT 100 NM 13,600



ELEV 477	TDZE 24R 475
	TDZE 24L 477



CATEGORY	C	D	E
S-24R *	1140-1½	665 (700-1½)	
SIDE-STEP 24L	1140-1½ 663 (700-1½)	1140-2 663 (700-2)	1140-2¼ 663 (700-2¼)
CIRCLING **	1140-1½ 663 (700-1½)	1180-2¼ 703 (800-2¼)	1360-3 883 (900-3)

HI-TACAN Z RWY 24R

SW-3, 23 JAN 2025 to 20 FEB 2025

SW-3, 23 JAN 2025 to 20 FEB 2025