

VITKO-THREE DEPARTURE (VITKO3 • VITKO)

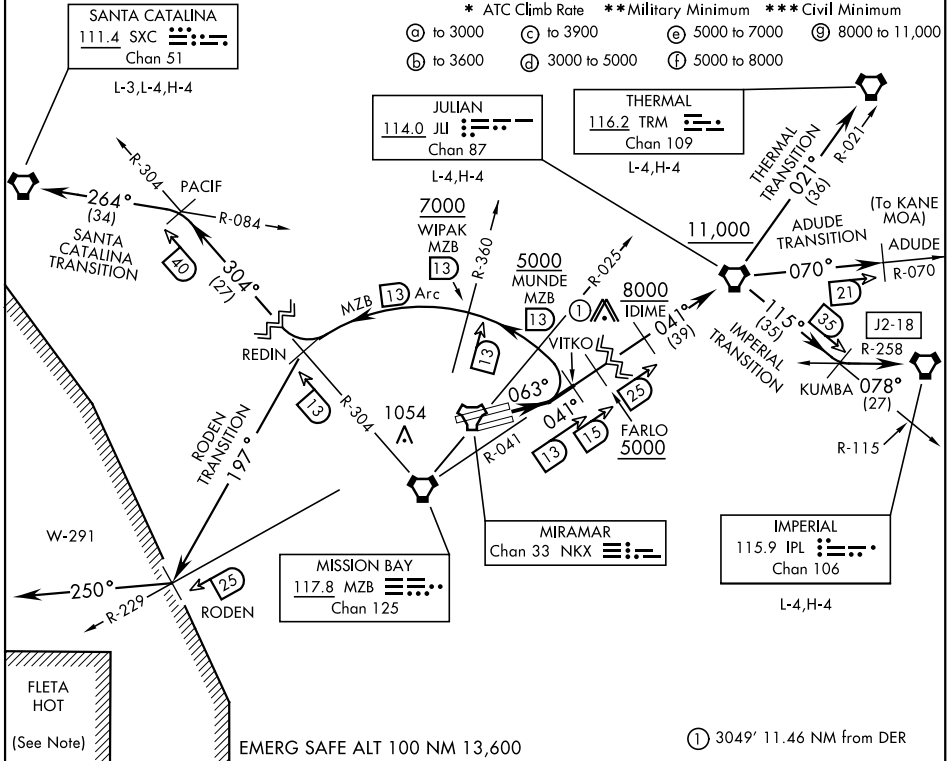
SAN DIEGO, CALIFORNIA

AL-903 [USN]
 ATIS ★ 133.475 352.0
 CLNC DEL
 125.975 254.325
 GND CON
 128.625 307.325
 FOSS TOWER ★
 135.2 298.925
 SOCIAL DEP CON
 132.2 269.1 E

Rwy	Knots	60	120	180	240	300	360
* 6L/R ⓐ	V/V(fpm)	520	1040	1560	2080	2600	3120
** 6L/R ⓑ	V/V(fpm)	280	560	840	1120	1400	1680
*** 6L/R ⓒ	V/V(fpm)	300	600	900	1200	1500	1800
* 6L/R ⓓ	V/V(fpm)	680	1360	2040	2720	3400	4080
* 6L/R ⓔ	V/V(fpm)	353	706	1059	1412	1765	2118
* 6L/R ⓕ	V/V(fpm)	300	600	900	1200	1500	1800
* 6L/R ⓖ	V/V(fpm)	220	440	660	880	1100	1320

* ATC Climb Rate **Military Minimum *** Civil Minimum

- ⓐ to 3000 ⓑ to 3900 ⓔ 5000 to 7000 ⓖ 8000 to 11,000
- ⓓ to 3600 ⓕ 3000 to 5000 ⓖ 5000 to 8000



SW-3, 23 JAN 2025 to 20 FEB 2025

SW-3, 23 JAN 2025 to 20 FEB 2025

DEPARTURE ROUTE DESCRIPTION

TAKEOFF RWY 6L/R: Climb via heading 063° to intercept and proceed via MZB VORTAC R-041 to VITKO. Join MZB R-041 at or above 3000. Thence...

ADUDE TRANSITION (VITKO3 • ADUDE): Via MZB R-041 to JLI VORTAC. Then JLI R-070 to ADUDE. Cross FARLO at or above 5000. Cross IDIME at or above 8000. Cross JLI VORTAC at or above 11,000. (To operate in KANE MOA.)

IMPERIAL TRANSITION (VITKO3 • IPL): Via MZB R-041 to JLI VORTAC. Then via JLI R-115 to KUMBA INT, then via IPL VORTAC R-258 to IPL. Cross FARLO at or above 5000. Cross IDIME at or above 8000. Cross JLI VORTAC at or above 11,000.

(Continued on next page)

VITKO-THREE DEPARTURE (VITKO3 • VITKO)

SAN DIEGO, CALIFORNIA