

VORTAC COT <b>115.8</b> Chan <b>105</b>	APP CRS <b>259°</b>	Rwy Idg TDZE Apt Elev <b>N/A</b> <b>N/A</b> <b>474</b>
---	------------------------	---

**VOR-A**

COTULLA-LA SALLE COUNTY (COT)

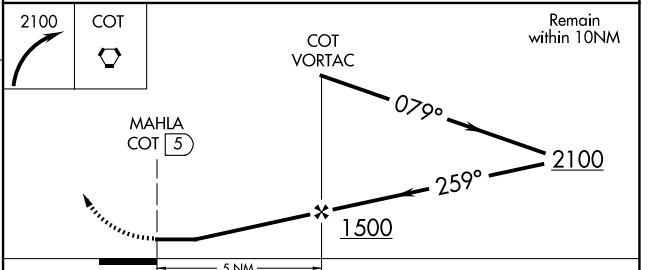
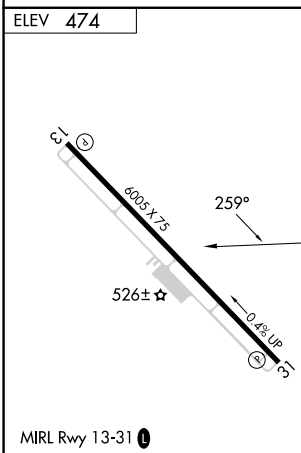
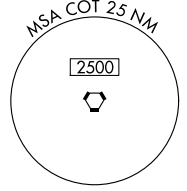
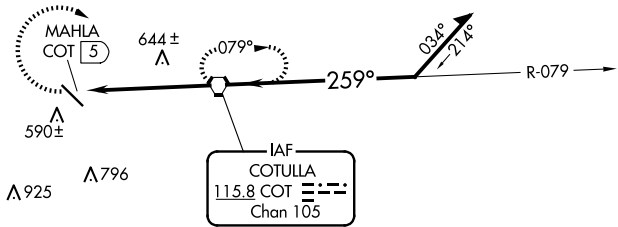
**▼** When local altimeter setting not received, use Pleasanton Muni altimeter setting; increase all MDA 120 feet, Circling Cat C visibility ½ SM.

**MISSED APPROACH:** Climbing right turn to 2100 direct COT VORTAC and hold.

ASOS <b>118.325</b>	HOUSTON CENTER <b>134.6 322.5</b>	UNICOM <b>122.7 (CTAF) 0</b>
------------------------	--------------------------------------	---------------------------------

△1038

△887



FAF to MAP 5 NM						CATEGORY	A	B	C	D
Knots	60	90	120	150	180	<b>☑</b> CIRCLING	920-1 446 (500-1)	940-1 466 (500-1)	1120-1¾ 646 (700-1¾)	NA
Min:Sec	5:00	3:20	2:30	2:00	1:40					

SC-3, 23 JAN 2025 to 20 FEB 2025

SC-3, 23 JAN 2025 to 20 FEB 2025