

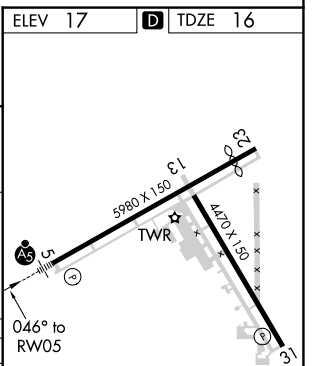
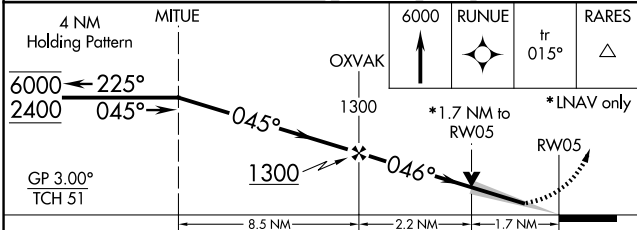
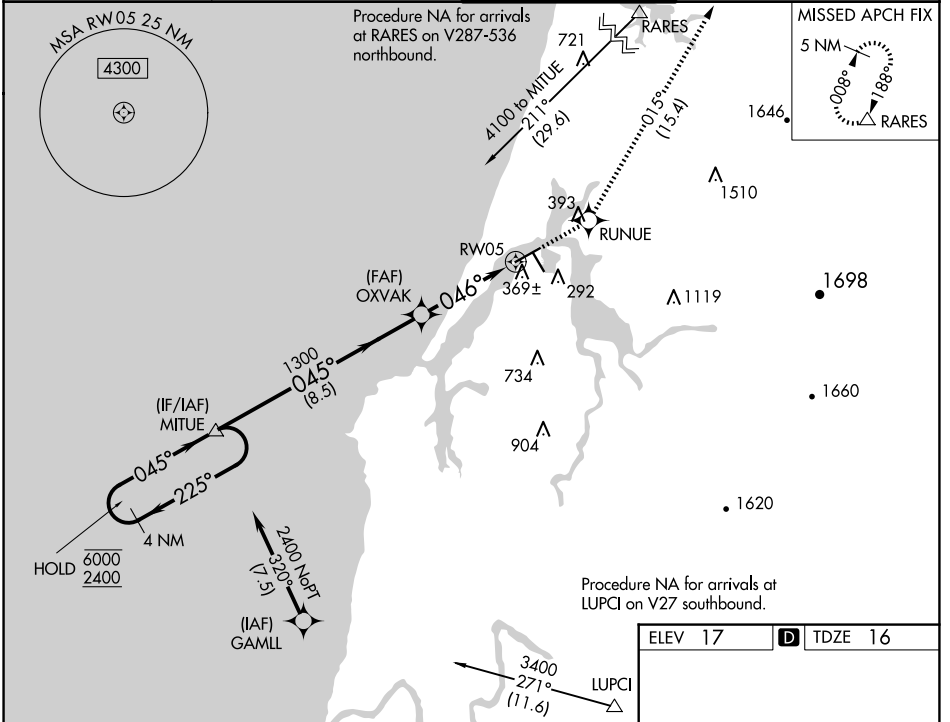
WAAS CH 82416	APP CRS 046°	Rwy Idg TDZE Apt Elev	5320 16 17
-------------------------	------------------------	-----------------------------	---------------------------------------

RNAV (GPS) Y RWY 5

SOUTHWEST OREGON RGNL (OTH)

RNP APCH	MALSRL	MISSED APPROACH: Climb to 6000 direct RUNUE and on track 015° to RARES and hold, continue climb-in-hold to 6000.
<p>▼ Circling Rwy 13, 31 NA at night. For uncompensated Baro-VNAV systems, LNAV/VNAV NA below -2°C or above 54°C. For inop ALS, increase LPV all Cats visibility to ½ SM, LNAV/VNAV all Cats visibility to 1½ SM, and increase LNAV Cat C/D visibility to 1¾ SM.</p>		

AWOS-3PT 135.075	SEATTLE CENTER 127.55 254.35	NORTH BEND TOWER* 118.45 (CTAF)	GND CON 127.1
----------------------------	--	---	-------------------------



CATEGORY	A	B	C	D
LPV DA		319-½	303 (400-½)	
LNAV/VNAV DA		550-1¾	534 (600-1¾)	
LNAV MDA	620-½	604 (700-½)	620-1¾	604 (700-1¾)
CIRCLING	680-1	820-1	1100-3	1160-3
	663 (700-1)	803 (900-1)	1083 (1100-3)	1143 (1200-3)

HIRL Rwy 5-23
MIRL Rwy 13-31
REIL Rwys 13, 23 and 31

NW-1, 23 JAN 2025 to 20 FEB 2025

NW-1, 23 JAN 2025 to 20 FEB 2025