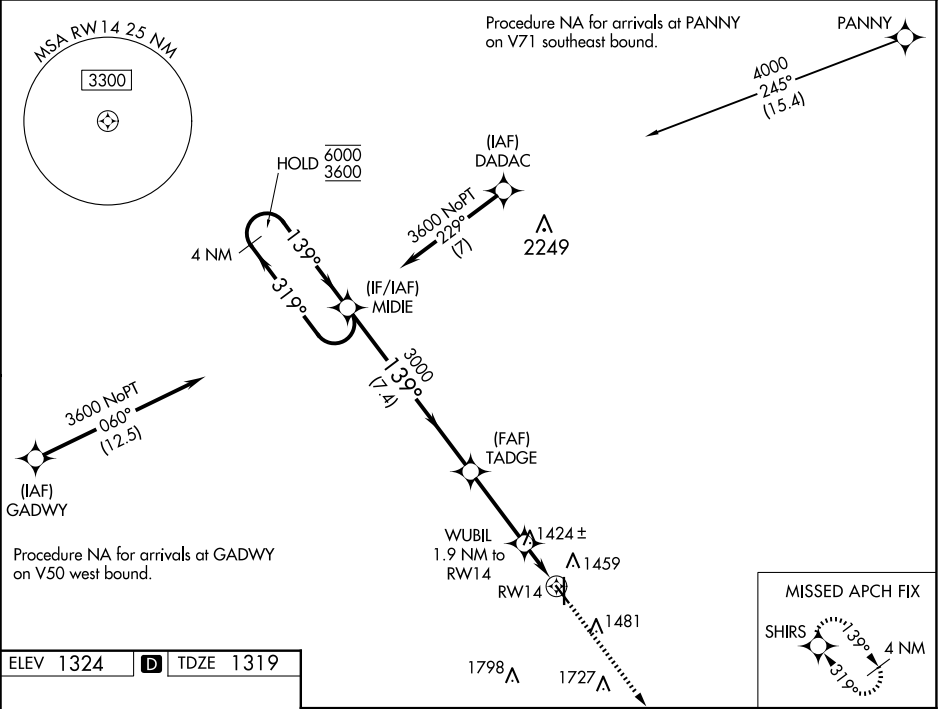


WAAS CH 69620 W14A	APP CRS 139°	Rwy Idg TDZE Apt Elev	4401 1319 1324
--	------------------------	-----------------------------	---

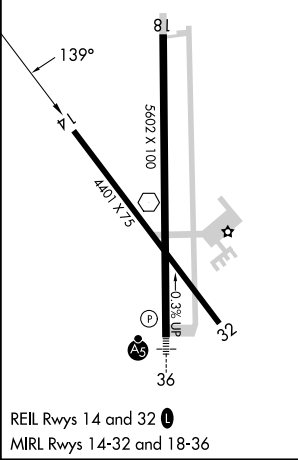
RNAV (GPS) RWY 14

BEATRICE MUNI (BIE)

RNP APCH - GPS.		MISSED APPROACH: Climb to 3600 direct SHIRS and hold.
AWOS-3 125.325	MINNEAPOLIS CENTER 126.4 317.7	UNICOM 122.8 (CTAF)



ELEV 1324	D	TDZE 1319
-----------	----------	-----------



	MIDIE		TADGE	WUBIL	SHIRS
	4 NM Holding Pattern		3000	1.9 NM to RWY 14	3600
	6000 ← 319°	3600 → 139°	739°	1.2 NM to RWY 14	↑
			3000		◆
			1960		
			7.4 NM	3.2 NM	0.7
					1.2 NM
GP 3.00°					
TCH 45					
CATEGORY	A	B	C	D	
LPV DA		1569-1	250 (300-1)		
LNAV/VNAV DA		1569-1	250 (300-1)		
LNAV MDA	1760-1	441 (500-1)	1760-1 $\frac{3}{8}$	441 (500-1 $\frac{3}{8}$)	
C CIRCLING	1760-1 436 (500-1)	1800-1 476 (500-1)	2000-2 676 (700-2)	2100-2 $\frac{1}{2}$ 776 (800-2 $\frac{1}{2}$)	

BEATRICE, NEBRASKA
MIRL Rwy 14-32 and 18-36

40°18'N-96°45'W

RNAV (GPS) RWY 14

BEATRICE MUNI (BIE)

NC-2, 23 JAN 2025 to 20 FEB 2025

NC-2, 23 JAN 2025 to 20 FEB 2025