

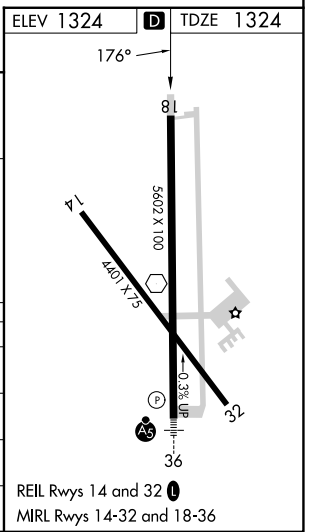
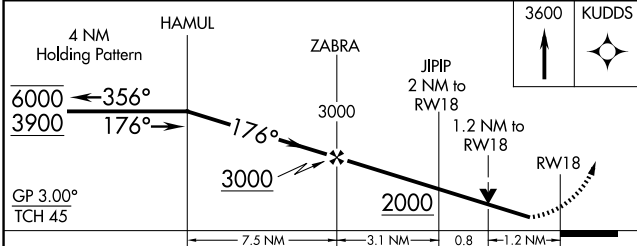
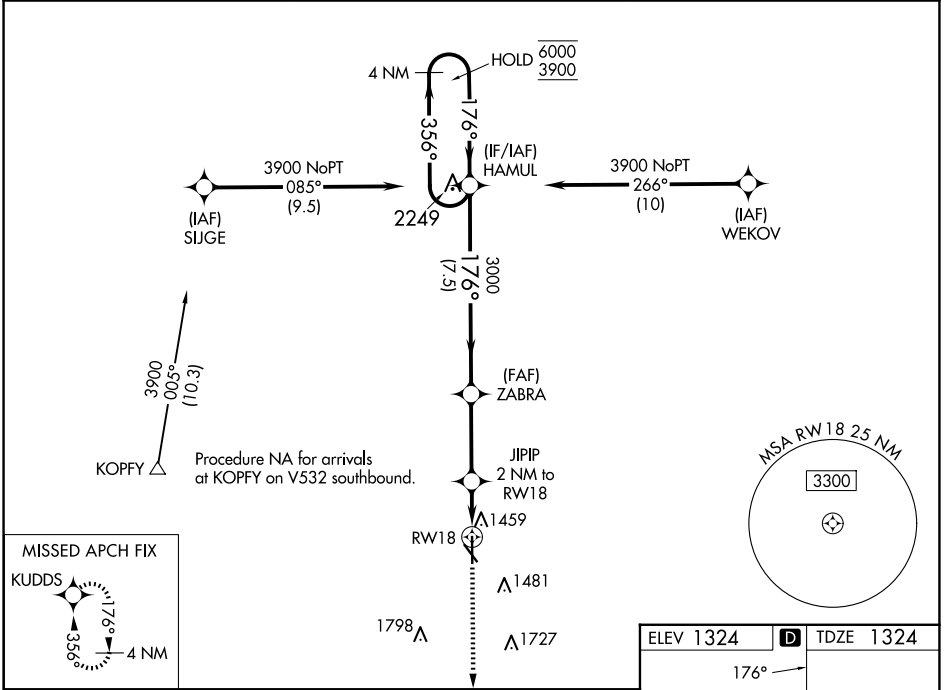
WAAS CH 42920 W18A	APP CRS 176°	Rwy Idg TDZE Apt Elev	5602 1324 1324
--	------------------------	-----------------------------	---

RNAV (GPS) RWY 18

BEATRICE MUNI (BIE)

RNP APCH - GPS.	MISSED APPROACH: Climb to 3600 direct KUDDIS and hold.
Rwy 18 helicopter visibility reduction below 3/4 SM NA. For uncompensated Baro-VNAV systems, LNAV/VNAV NA below -17°C or above 54°C.	

AWOS-3 125.325	MINNEAPOLIS CENTER 126.4 317.7	UNICOM 122.8 (CTAF) 0
--------------------------	--	---------------------------------



CATEGORY	A	B	C	D
LPV DA	1574-3/4		250 (300-3/4)	
LNAV/VNAV DA	1670-1		346 (400-1)	
LNAV MDA	1760-1	436 (500-1)	1760-1 1/4	436 (500-1 1/4)
CIRCLING	1820-1 496 (500-1)		2000-2 676 (700-2)	2100-2 1/2 776 (800-2 1/2)

NC-2, 23 JAN 2025 to 20 FEB 2025

NC-2, 23 JAN 2025 to 20 FEB 2025