

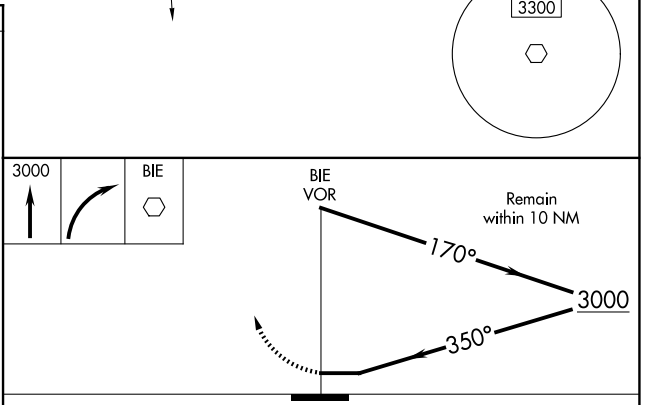
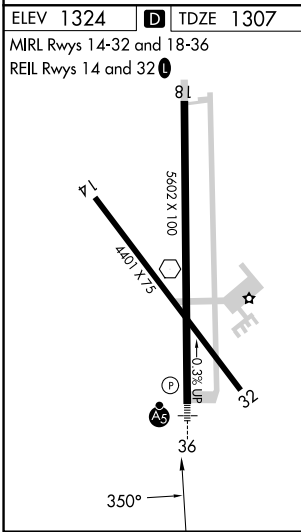
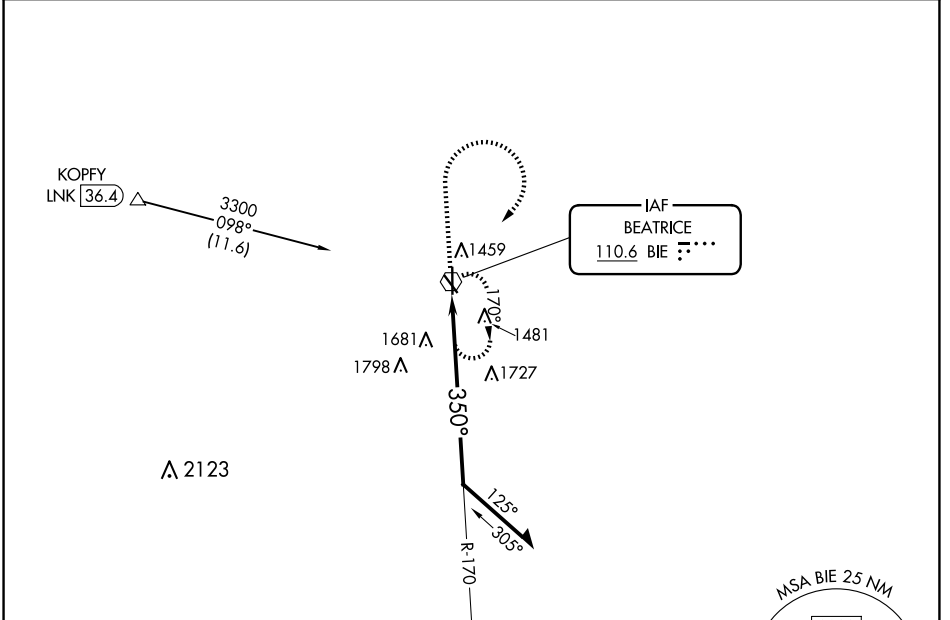
VOR BIE <b>110.6</b>	APP CRS <b>350°</b>	Rwy Idg TDZE Apt Elev	<b>5602</b> <b>1307</b> <b>1324</b>
-------------------------	------------------------	-----------------------------	---

# VOR RWY 36

BEATRICE MUNI (BIE)

DME required for procedure entry.		MALSR 	MISSED APPROACH: Climb to 3000 then right turn direct BIE VOR and hold.
	For inop ALS, increase S-36 Cats A/B visibility to 1 SM and Cats C/D visibility to 2 SM.		

AWOS-3 <b>125.325</b>	MINNEAPOLIS CENTER <b>126.4 317.7</b>	UNICOM <b>122.8 (CTAF)</b>
--------------------------	--	-------------------------------



CATEGORY	A	B	C	D
S-36	2040- <sup>3</sup> / <sub>4</sub>	733 (800- <sup>3</sup> / <sub>4</sub> )	2040-1 <sup>5</sup> / <sub>8</sub>	733 (800-1 <sup>5</sup> / <sub>8</sub> )
<input checked="" type="checkbox"/> CIRCLING	2040-1	716 (800-1)	2040-2 716 (800-2)	2100-2 <sup>1</sup> / <sub>2</sub> 776 (800-2 <sup>1</sup> / <sub>2</sub> )

NC-2, 23 JAN 2025 to 20 FEB 2025

NC-2, 23 JAN 2025 to 20 FEB 2025