

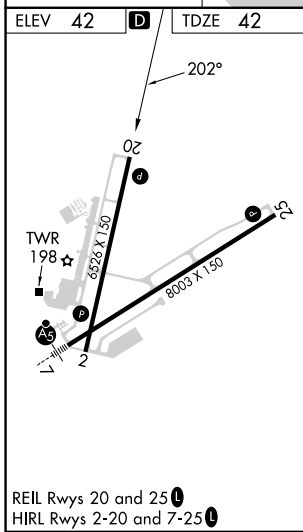
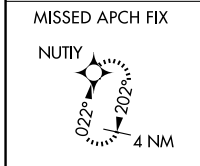
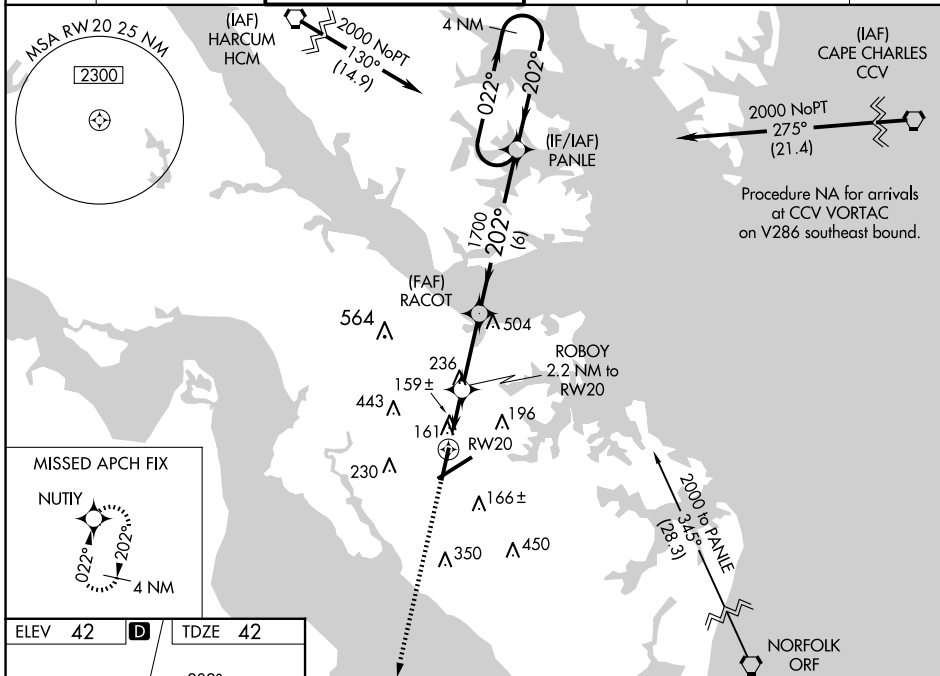
WAAS CH 97420 W20A	APP CRS 202°	Rwy Idg TDZE Apt Elev	6526 42 42
--------------------------	-----------------	-----------------------------	------------------

RNAV (GPS) RWY 20

NEWPORT NEWS/WILLIAMSBURG INTL (PHF)

RNP APCH.		MISSED APPROACH: Climb to 2300 direct NUTY and hold.			
<p>▼ For uncompensated Baro-VNAV systems, LNAV/VNAV NA below -11°C or above 54°C.</p> <p>▲ Rwy 20 helicopter visibility reduction below ¾ SM NA.</p>					

ATIS 128.65	NORFOLK APP CON 125.7 335.625	NEWPORT NEWS TOWER ★ 118.7(CTAF) 0 257.9	GND CON 121.9 348.6	CLNC DEL 121.65 225.4	UNICOM 122.95
-----------------------	---	--	-------------------------------	---------------------------------	-------------------------



ELEV 42	D	TDZE 42				
<p>2300 NUTY</p> <p>* LNAV only</p> <p>* 1.1 NM to RW20</p> <p>ROBOY 2.2 NM to RW20</p> <p>RACOT 1700</p> <p>PANLE 4 NM Holding Pattern</p> <p>2000</p> <p>GP 3.00° TCH 42</p>						
<p>1.1 NM</p> <p>1.1 NM</p> <p>2.8 NM</p> <p>6 NM</p>						
CATEGORY	A		B		C	
LPV DA	379-1½		337 (400-1½)			
LNAV/VNAV DA	474-1½		432 (500-1½)			
LNAV MDA	440-1		398 (400-1)		440-1½ 398 (400-1½)	
C CIRCLING	520-1 478 (500-1)		540-1 498 (500-1)		760-2 718 (800-2)	
					780-2¼ 738 (800-2¼)	

NE-3, 23 JAN 2025 to 20 FEB 2025

NE-3, 23 JAN 2025 to 20 FEB 2025