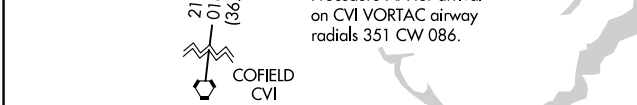
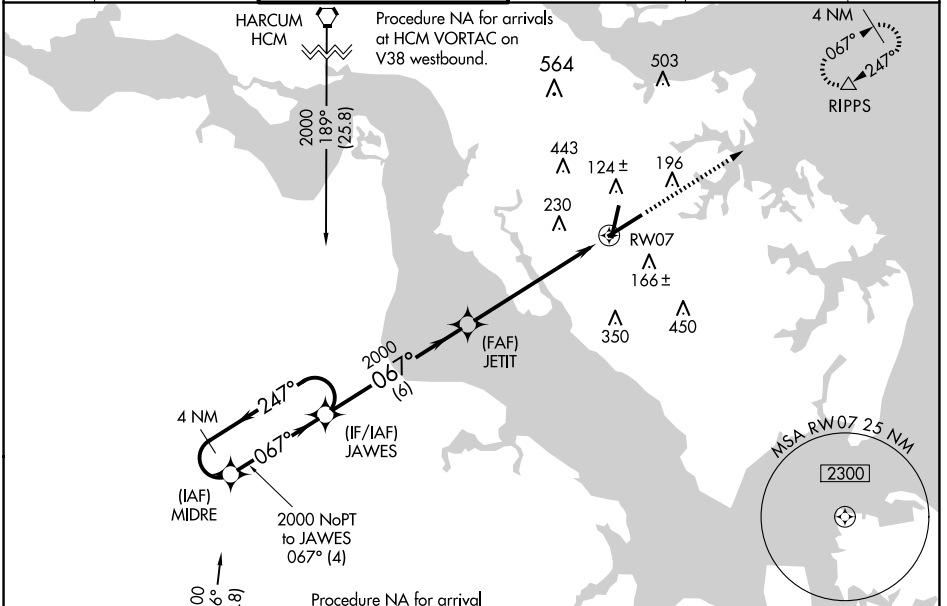


WAAS CH 45607 W07A	APP CRS 067°	Rwy Idg 8003 TDZE 40 Apt Elev 42
--	------------------------	---

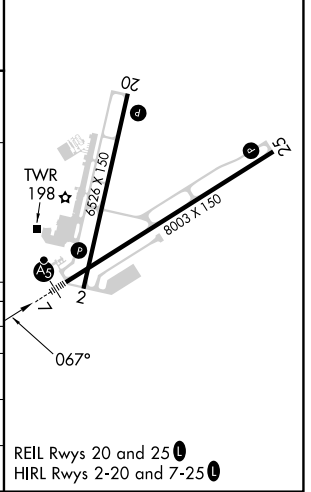
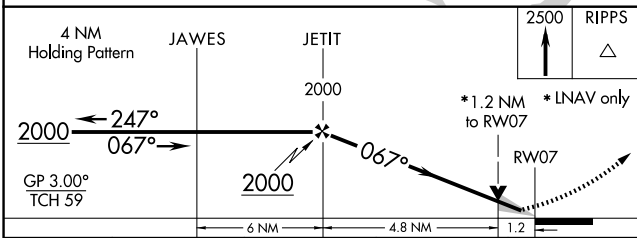
RNAV (GPS) RWY 7

NEWPORT NEWS/WILLIAMSBURG INTL (PHF)

RNP APCH. <p>For uncompensated Baro-VNAV systems, LNAV/VNAV NA below -11°C or above 54°C. For inop MALSRS, increase LNAV/VNAV all Cats visibility to 1 3/8.</p>			MALSRS 	MISSED APPROACH: Climb to 2500 direct RPPS and hold.	
ATIS 128.65	NORFOLK APP CON 125.7 335.625	NEWPORT NEWS TOWER ★ 118.7 (CTAF) 0 257.9	GND CON 121.9 348.6	CLNC DEL 121.65 225.4	UNICOM 122.95



ELEV 42	D TDZE 40
---------	------------------



CATEGORY	A	B	C	D
LPV DA		243/24	203 (300-1/2)	
LNAV/VNAV DA		474/50	434 (500-1)	
LNAV MDA	480/24	440 (500-1/2)	480/40	440 (500-3/4)
C CIRCLING	520-1 478 (500-1)	540-1 498 (500-1)	760-2 718 (800-2)	780-2 1/4 738 (800-2 1/4)

NE-3, 23 JAN 2025 to 20 FEB 2025

NE-3, 23 JAN 2025 to 20 FEB 2025